

CROWN EXAMINATION TEST

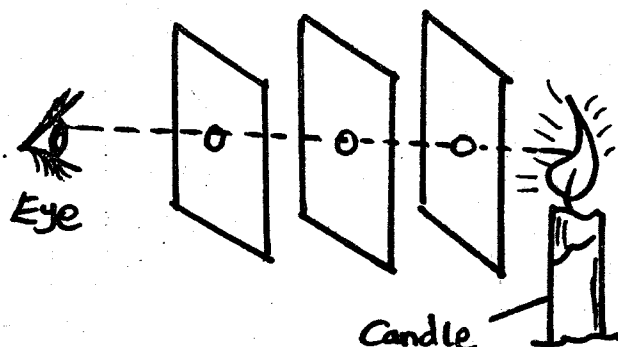
STD. 6 - TERM 3 - 2021

SCIENCE

Time: 1hr 40 mins

- Which one of the following is true about translucent materials? They are used _____
 A. on the windscreens of vehicles
 B. on the windows of toilets
 C. to separate private walls
 D. on windows of bedrooms
- Which one of the following is not a colour of the rainbow?
 A. Red B. Blue
 C. Yellow D. Black
- Transpiration in plants takes place mainly through the _____
 A. leaves B. stems
 C. roots D. flowers
- Which one of the following is not an example of an amphibian?
 A. Newt B. Lizard
 C. Frog D. Salamander
- Which one of the following is not a food crop?
 A. Legumes B. Cereals
 C. Tubers D. Fibre crops

The diagram below was used to investigate an aspect of light

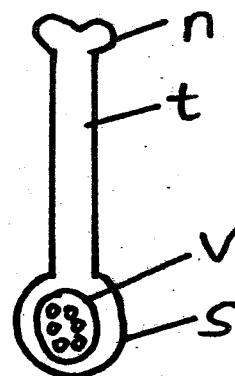


6. Which one of the following aspects of

light was being investigated?

- Reflection of light from a surface
 - Dispersion of light
 - Refraction of light as it passes through a medium
 - Light travels in a straight line
- Heat from the sun reaches the earth through
 A. conduction B. radiation
 C. transfusion D. convection
 - Which one of the following is useful in teeth formation?
 A. Calcium B. Proteins
 C. Carbohydrates D. Vitamins
 - When a fast moving van stops suddenly, the passengers are _____
 A. thrown backwards
 B. thrown in front
 C. thrown upwards
 D. thrown sideways
 - The force that acts on an object moving in the air is called _____
 A. pull B. magnet C. push D. friction

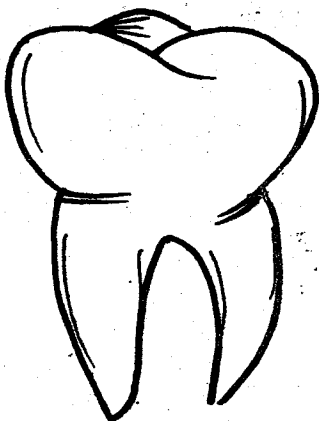
Use the diagram below shows the female reproductive part of a flower to answer questions 11 - 12.



11. Name the part marked t

- A. stigma B. anthers
C. style D. filament
12. Which part becomes the fruit after pollination?
A. v B. s
C. t D. n
13. Which one of the following is a sea mammal?
A. crocodile
B. Shark
C. Seals
D. Tilapia
14. Which of the organs below stores undigested food?
A. Stomach B. ileum
C. Rectum D. Appendix
15. Which one of the following statements is **not** true about clay soil?
A. It highly retains water
B. It has very few air spaces
C. it feels sticky when wet
D. It has the highest drainage ability
16. Onions store food in the _____
A. stems B. leaves
C. roots D. stem.

The diagram below represents a tooth

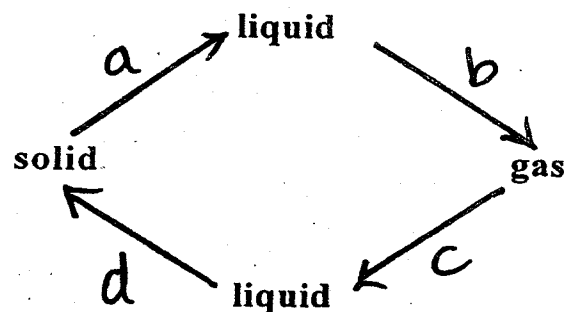


Which one of the following is the use of the tooth?

- A. Cutting pieces of meat
B. Tearing of flesh
C. Grasping prey

- D. Chewing and grinding of food
18. Which one of the following diseases **cannot** be prevented by maintaining proper hygiene?
A. Cholera B. Malaria
C. Typhoid D. Dysentery
19. Matter is anything that occupies space and has _____
A. density B. size
C. mass D. weight
20. Animal feeds rich in nutrients but low in fibre are known as _____
A. hay B. legumes
C. silage D. concentrates
21. Which one of the following animals reproduce by laying eggs?
A. Whale
B. Spiny ant-eater
C. Man
D. Sheep
22. At which stage of HIV infection is it possible for one to test negative?
A. Window stage
B. incubation stage
C. Symptomatic stage
D. Assymptomatic stage

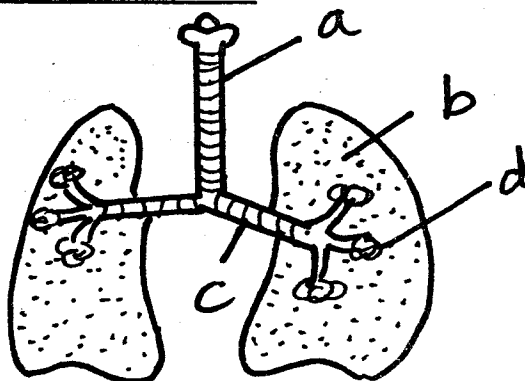
Below is a diagram that represents change of states of matter



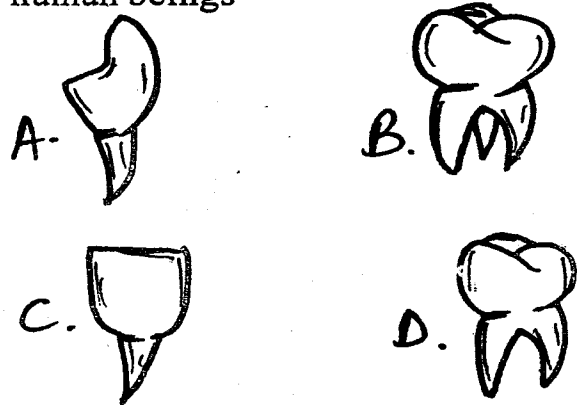
23. Which letter represents evaporation
A. a B. b
C. c D. d
24. Which letter represents melting

- A. d B. c
C. b D. a
25. Which letter represents condensation
A. d B. c C. a D. b
26. A dry leaf floats on water mainly be
cause of its _____
A. density B. material
C. size D. shape
27. Which one of the following methods of
grazing makes uses temporary eletric
fences?
A. Tethering B. Stall feeding
C. Paddockng D. Strip grazing
28. Which one of the following is **not** a
problem related to teeth?
A. Formation of cavities
B. Bad smell
C. Shedding of teeth
D. Bleeding gums
29. Photosynthesis and preservation of fizzy
drinks both use gases that takes _____
A. 21% air B. 0.97% air
C. 78% air D. 0.03% air
30. Which one of the following is not a
change that can be observed in an
adolescent girl?
A. Broadening of hips
B. Enlargement of breasts
C. Breaking of Voices
D. increase in height
31. when breathing in, air is cleaned in the:
A. nose B. diaphragm
C. bronchus D. lungs

Use the diagram below to answer
questions 32 - 34.



32. Air is cleaned in the part marked
A. d B. a C. b D. c
33. Name the part marked c
A. air sacs B. trachea
C. lungs D. bronchus
34. Name the part marked a
A. nose B. trachea
C. lungs D. air sacs
35. Which type of tooth grows last in
human beings

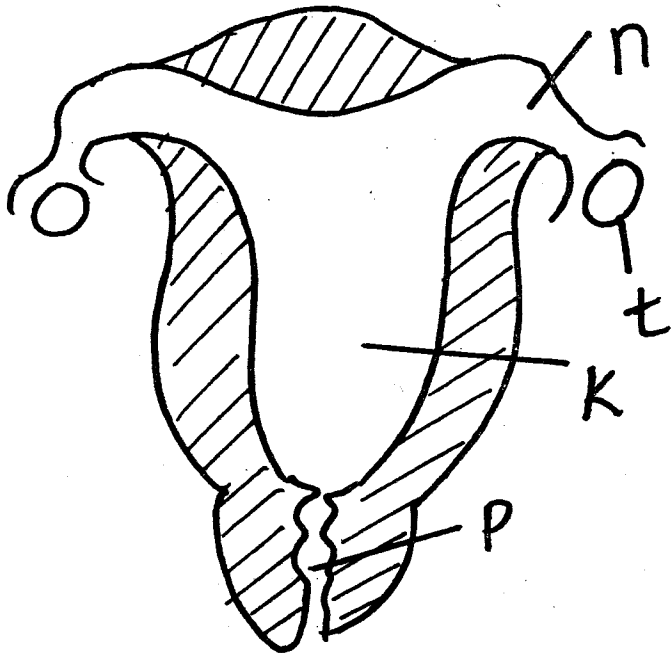


36. Which one of the following is in
solid-form
A. chalk dust B. steam
C. water vapour D. smoke
37. The soil that has cracks when dry has
A. low capillarity B. poor drainage
C. large particles D. big air spaces
38. Which group among the following
contains invertebrates only?
- | | |
|--|---|
| A. cow
goat
snake
sheep | B. tick
mite
housefly
mosquito |
| C. lizard
snake
crocodile
man | D. snake
tortoise
tilapia
goat |

39. A water-borne disease whereby the
patient has blood stained faeces and
urine is known as _____
A. cholera B. typhoid
C. bilharzia D. dysentery
40. A mushroom reproduces by means of

- A. seeds B. spores
C. budding D. vegetative

The diagram below represents the female reproductive system. Use it to answer questions 41 - 43.



41. Name the part marked n
A. oviduct B. urethra
C. ovary D. womb
42. Fertilisation occurs in the part marked
A. p B. n
C. k D. t
43. Name the part marked k
A. fallopian tube B. oviduct
C. uterus D. cervix
44. Pressure in liquids increases with _____
A. volume B. density
C. depth D. temperature
45. Absorption of mineral salts and water in the alimentary canal takes place in the _____
A. rectum
B. small intestines
C. colon
D. duodenum
46. Among the following, which one is not an agent of pollination?
A. wind B. insects

- C. birds D. water
47. Soil erosion on bare grounds can be controlled by _____
A. cover cropping
B. building terraces
C. building gabions
D. practising contour farming

48. John had the following signs and symptoms
- pain in the joints
- pain in abdominal parts
- fever.
- skin rashes

Which one of the following diseases was John suffering from?

- A. malaria B. polio
C. typhoid D. cholera
49. Which planet is also known as the evening star?
A. Jupiter B. Venus
C. Neptune D. Mars
50. Which diagram among the following shows that pressure in liquids increases with depth?

