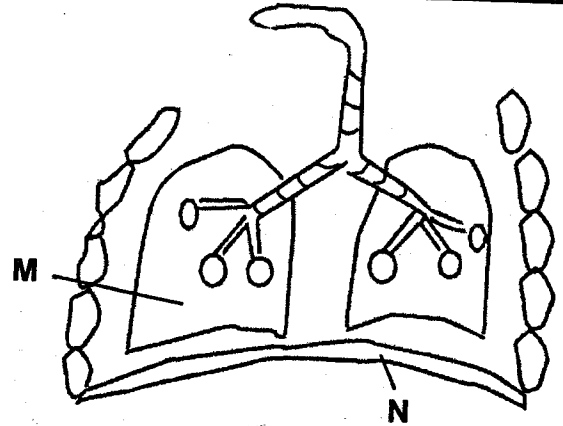
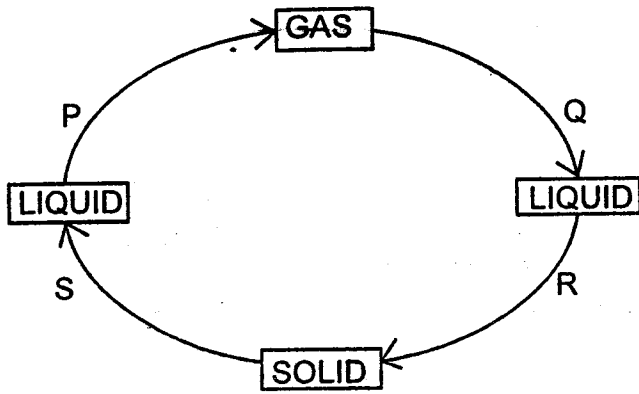


- Which of the following pairs shows support organs in the human digestive system?
  - Gullet and stomach
  - Liver and duodenum
  - Pancreas and liver
  - Colon and ileum
- Which one of the following statements is true about all veins?
  - They transport blood to the heart
  - They have thick elastic walls
  - Blood flows through them at high pressure
  - They carry scarlet red blood
- Which one of the following is the first step before using medicine?
  - Reading the prescription
  - Checking the expiry date
  - Shaking before use
  - Reading the instructions
- Which one of the following pairs of diseases are infants immunised against immediately at birth?
  - Tuberculosis and polio
  - Tetanus and polio
  - Measles and whooping cough
  - Measles and yellow fever
- The following are recreational uses of water. Which one is not?
  - Swimming
  - Surfing
  - Boat racing
  - Irrigation
- Which one of the following characteristics of sandy soil DOES NOT explain why water drains through it easily?
  - Large particles
  - Shiny particles
  - Rough texture
  - Large air spaces
- The diagram below shows the human breathing system



- Which one of the following statements is **CORRECT**? During breathing in
- part M forces air out
  - part N moves downwards
  - part M becomes deflated
  - part N becomes dome-shaped
- Which one of the following effects of HIV and AIDS does **NOT** affect the family?
    - Increase in school drop-outs
    - Lacking of parental care
    - Loss of family members
    - Increase in number of orphans
  - Which of the following statements is **NOT** true about all birds?
    - They lay fertilized eggs
    - They move by flying
    - Their bodies are covered with feathers
    - They have beaks
  - Which one of the following pairs of vaccines are administered to infants at birth?
    - Anti-measles and yellow fever
    - Anti-polio and DPT
    - BCG and Anti-polio
    - DPT and Anti-polio
  - Which of the following ways of maintaining simple tools is carried out on cutting tools only?
 

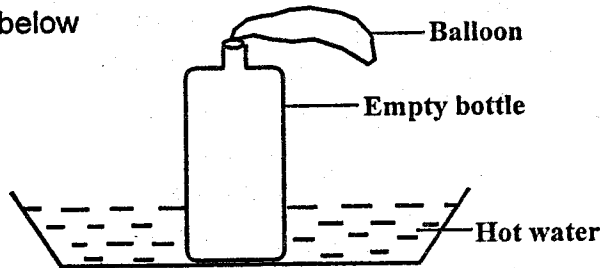
A. Oiling	B. Sharpening
C. Proper storage	D. Proper use
  - The chart below shows the changes of state in matter



Which pair of processes require an increase in temperature in order to occur?

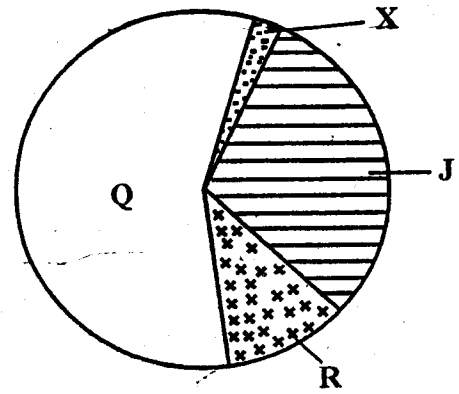
- A. S and P                      B. R and S  
C. Q and R                      D. P and Q

13. Standard six pupils at Masomoni Primary School set up an experiment as shown below



What was their conclusion after sometime?

- A. The balloon got inflated  
B. The balloon burst  
C. Droplets of water formed in the bottle  
D. Air expands when heated
14. Which one of the following plants is NOT a saprophyte?  
A. Bracket tree                      B. Moss  
C. Mushroom                      D. Yeast
15. Which of the following pairs of flower parts does not form either female or male parts?  
A. Anther and ovary  
B. Calyx and corolla  
C. Ovary and ovules  
D. Style and filament
16. Which one of the following parts of the human digestive system is NOT correctly matched with its function?  
A. Teeth – Breaking food into smaller particles  
B. Ileum – Absorbing digested food  
C. Colon – Storing digested food  
D. Pancreas – Producing digestive juice
17. The pie chart below shows the composition of air



Which sector represents the gas which is given out during photosynthesis?

- A. J                      B. Q                      C. X                      D. R

18. A periscope is used to see things round corners. It works on the principle that  
A. light is reflected  
B. light is absorbed  
C. light is refracted  
D. light is dispersed
19. Which one of the following is NOT a sign of an attack by parasites in livestock?  
A. Anaemia  
B. Poor health  
C. Itching and irritation  
D. Wet muzzles
20. Which one of the following waterborne diseases cannot be controlled by drinking boiled water and washing fruits before eating?  
A. Cholera                      B. Typhoid  
C. Dysentery                      D. Bilharzia
21. Which of the following weather instruments is used to measure two aspects of weather?
- A.                      B.   
C.                      D.
22. Which one of the following pairs represents the inner planets of the solar system?  
A. Mercury and Venus  
B. Earth and Uranus

- C. Mars and Jupiter
- D. Mercury and Earth

23. The following are methods of preserving food

- i) Smoking
- ii) Freezing
- iii) Drying
- iv) Salting
- v) Canning

Which set of methods are traditional?

- A. i, iv, v
- B. i, ii, v
- C. i, iii, iv
- D. i, ii, iv

24. A child with thin brown hair, swollen hands, feet and face is also likely to

- A. have a faster heart beat
- B. appear weak and inactive
- C. have a face like an old person
- D. have knock knees

25. Which one of the following practices does not pollute the environment?

- A. Dumping factory wastes into a river
- B. Dumping vegetable remains in the garden
- C. Spilling used oil in the forest
- D. Spraying oil in a pond to kill mosquito larvae

26. The best way to allow natural light into a house is by the use of

- A. electricity
- B. large glass windows
- C. translucent iron sheets
- D. chimneys

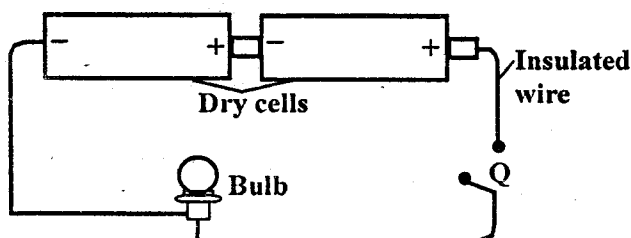
27. Which of the following plants is **CORRECTLY** matched with its storage organ?

- A. Ginger – stem
- B. Onion – root
- C. Irish potato – root
- D. Sugarcane – leaves

28. Which one of the following is **TRUE** about heat transfer by convection? It takes place in

- A. gases and solids
- B. liquids and solids
- C. gases and liquids
- D. liquids only

29. The diagram below represents a set-up that can be used to investigate good and poor conductors of electricity.



Which material when placed at Q will make the bulb light?

- A. Pencil tip
- B. Glass rod
- C. Rubber band
- D. Plastic ruler

30. A HIV patient had the following signs and symptoms

- i) Tested negative
- ii) Could infect others
- iii) Looked normal and healthy

The patient was undergoing

- A. full blown stage
- B. window stage
- C. incubation stage
- D. symptomatic

31. Which of the following components of blood prevents the entry of germs into the blood stream?

- A. Platelets
- B. Red blood cells
- C. White blood cells
- D. Plasma

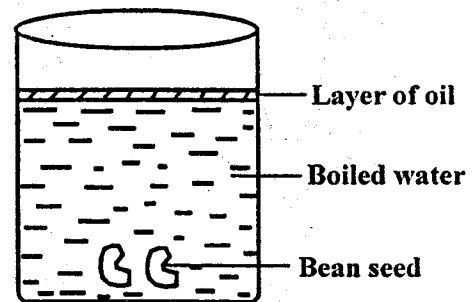
32. Green bananas provide the body with similar nutrients to

- A. water melon
- B. chicken
- C. honey
- D. mutton

33. Flowers that have a scent also

- A. have feathery stigma
- B. have small anthers
- C. produce a lot of pollen grains
- D. have dul petals

34. Standard six pupils of Masumbi Primary School set up an experiment as shown below and left it to stay for a week



The bean seeds did not germinate. Which condition was lacking?

- A. Warmth
- B. Oxygen
- C. Moisture
- D. Sunlight

35. The following are materials used when investigating weather. Pressure in liquids increases with depth. Which one is **NOT**?

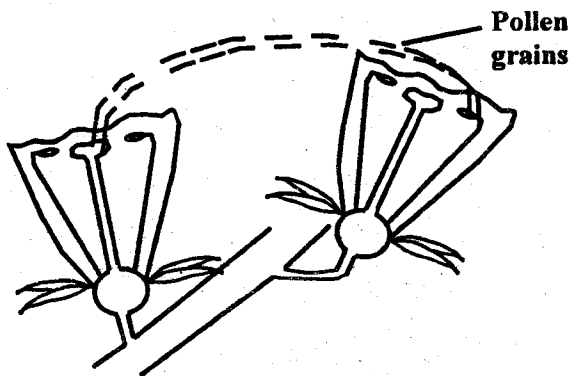
- A. Tin can
- B. Water
- C. Nail
- D. Collecting jar

36. Floating and sinking of objects cannot be influenced by

- A. weight of the object

- B. type of the material
- C. shape of the object
- D. size of the object

37. One of the following is NOT a social effect of abusing drugs. Which one is it?
- A. Impaired judgement
  - B. Rape
  - C. Truancy
  - D. Marital conflicts
38. Which one of the following is a way of conserving water by using laundry water to wash toilets?
- A. Re-using
  - B. Recycling
  - C. Harvesting
  - D. Mulching
39. Three of the following are uses of water in recreation. Which one is not?
- A. Boat racing
  - B. Surfing
  - C. Skiing
  - D. Making fountains
40. Which one of the following is NOT a characteristic of all animals?
- A. They grow and die
  - B. They respond to environmental changes
  - C. They give birth
  - D. They excrete
41. Which type of pollination is shown in the diagram below?



- A. Self pollination
  - B. Cross pollination
  - C. Wind pollination
  - D. Insect pollination
42. Which one of the following methods is least suitable for controlling weeds?
- A. Uprooting
  - B. Slashing
  - C. Mulching
  - D. Burning
43. Tobacco contains three of the following substances except
- A. tar
  - B. nicotine
  - C. carbon monoxide
  - D. smoke
44. Which one is the correct food chain formed from the following: Hawks, frogs, snakes, rats, kales and grasshoppers?

- A. Kales → grasshoppers → frogs → snakes
- B. Kales → grasshoppers → frogs → rats
- C. Kales → snakes → rats → hawks
- D. Kales → grasshoppers → hawks → snakes

45. Clouds that are white in colour with flat bases also
- A. form high in the sky
  - B. indicate heavy rainfall
  - C. are grey in colour
  - D. form low in the sky
46. The diagram below shows a certain type of soil erosion



The type of soil erosion shown above can be controlled by

- A. planting cover crops
  - B. constructing cut-off drains
  - C. building gabions
  - D. use of terraces
47. The main reason why top soil is added in a compost heap is to
- A. introduce decomposers
  - B. add more nutrients
  - C. provide food for decomposers
  - D. prevent evaporation
48. Which one of the following forms of energy does not require a medium of exchange?
- A. Light and electricity
  - B. Sound and heat
  - C. Electricity and sound
  - D. Heat and light
49. The following are all sources of sound pollution except
- A. loud music in public vehicles
  - B. sound in market places
  - C. sound from air crafts
  - D. soft music
50. The following are safety measures against lightning. Which one is NOT?
- A. Avoid walking in the open while it is raining
  - B. Not touching naked wires with bare hands
  - C. Fitting lightning arrestors
  - D. Not sheltering under trees when it is raining