



SKY FLYER EXAMINATIONS SERIES

STANDARD SEVEN

YEAR 2021

SCIENCE

SKF21G

READ THESE INSTRUCTIONS CAREFULLY

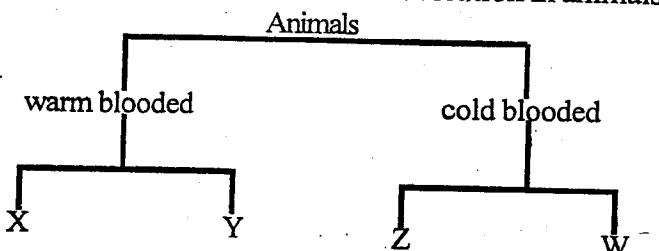
Time: 1hr 40min

- You have been given this question paper and a separate answer sheet. The question paper contains 50 questions.
- Make sure that you have written on the answer sheet

(i) Your name _____

(ii) Name of your school _____

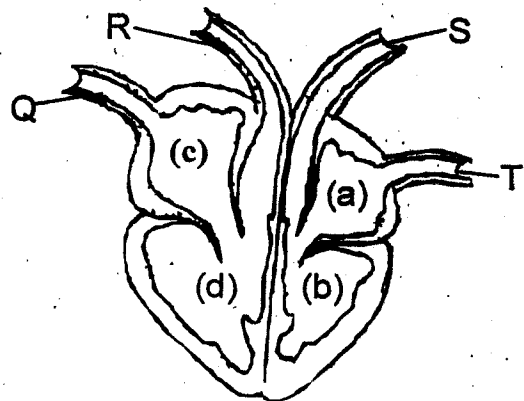
- The undigested food materials are temporarily stored in _____ before they are released out of the body.
A. ileum B. rectum
C. colon D. stomach
- The following are social effects of drug abuse **except**
A. truancy
B. rape
C. poor judgement
D. drug induced accidents
- In a food chain, green plants are referred to as;
A. tertiary consumers
B. consumers
C. producers
D. secondary consumers
- The chart below shows classification in animals



Which animals below can represent Y and W respectively?

- The whitish sticky substance that forms on the teeth when we don't brush them is known as
A. dental carries B. gingivitis
C. plaque D. dental floss
- The process of covering crops with dry materials such as grass to consume moisture is referred to as
A. shading B. cover cropping
C. compost manure D. mulching

Use the diagram below to answer the questions that follow 7-9

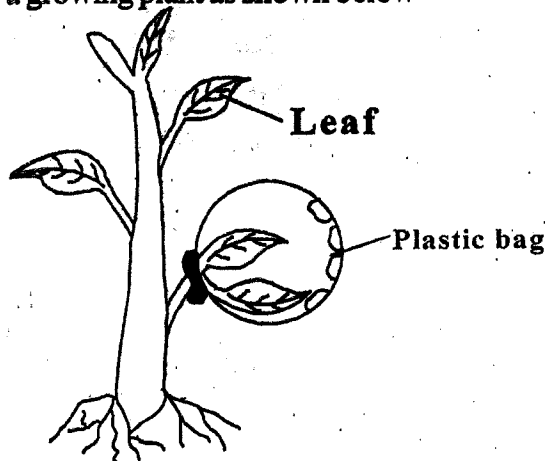


- Which two blood vessels have no valves?
A. Q and R B. Q and T
C. R and S D. S and T
- The two blood vessels that carries blood that is bright red are _____ and _____
A. Q and T B. R and S
C. S and T D. Q and R
- The chamber of the heart labelled b is
A. left ventricle B. right auricle
C. right ventricle D. left auricle
- In order to maintain strong and healthy teeth, we should take all the following except?

- A. fruits and vegetables B. sugarcane
C. milk D. sweets and chocolates

11. Which one of the following is an emotional change that takes place during adolescence?
A. increase in height and weight
B. pubic hair grows
C. shyness
D. pimples appear on the face
12. The largest component of blood is the _____
A. platelets B. plasma
C. white blood cells D. red blood cells
13. Which one of the following is a narcotic drug?
A. bhang B. alcohol C. miraa D. cocaine
14. Which one of the is the brightest planet.
A. mercury B. saturn
C. jupiter D. venus

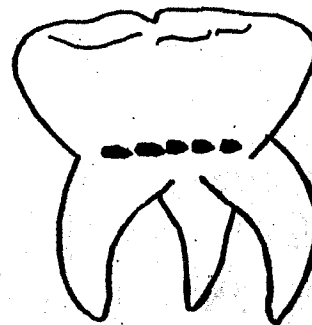
15. Pupils from Njogu-ini primary school tied a transparent polythene bag around the leaves of a growing plant as shown below



What were they investigating ?

- A. Transpiration B. Photosynthesis
C. Transport D. Drainage
16. Which one of the following is NOT a use of heat
A. cooking B. ironing
C. drying D. taking photograph
17. The amount of matter in an object is known as

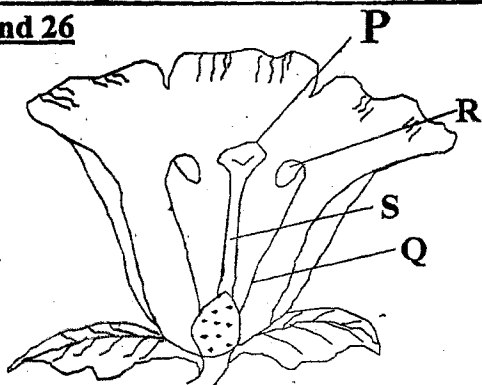
- A. volume B. mass C. weight D. density
18. Which one of the following animals is NOT a sea mammal
A. whale B. dolphin C. shark D. whale
19. The transfer of heat through gases and liquids is called
A. radiation and convection
B. convection only
C. conduction
D. conduction and radiation
20. The following are true statements about the tooth drawn below except



- A. Are wide and broad
B. Are twelve in total in adults
C. Have three or more roots
D. Are the last ones to shed
21. An animal infected with parasites has the following signs and symptoms except?
A. Irritation B. Glossy Coat
C. Rough Coat D. Decreased production
22. Which one of the following is a biological method of controlling field crop pests?
A. crop rotation
B. lady bird eating aphids
C. use of pesticides
D. early planting
23. Which one of the following is NOT an effect caused by water pollution?
A. corrosion of iron sheets by acid rain
B. growth of algae
C. water borne diseases
D. increased soil erosion

24. The following are functions of leaves in a plant except?
- A. exchange of gases
 - B. absorption of water
 - C. transpiration
 - D. making food for the plant

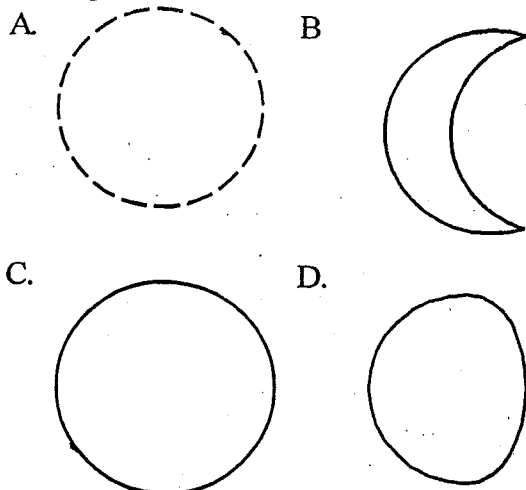
Use the diagram below to answer questions 25 and 26



25. Which parts represent the filament and the style respectively?
- A. P R
 - B. R S
 - C. S Q
 - D. Q P
26. The part that receives pollen grains during pollination is? _____
- A. P
 - B. R
 - C. S
 - D. Q
27. Napier grass is an example of _____
- A. pastures
 - B. fodder crops
 - C. legumes
 - D. concentrates
28. A child suffering from Kwashiorkor should be given food rich in _____
- A. roughage
 - B. carbohydrates
 - C. vitamins
 - D. proteins
29. Which one of the following is correct about solids. They have _____
- A. no definite shape or volume
 - B. definite shape but no definite volume
 - C. definite volume but no definite shape
 - D. definite shape and volume
30. Which one of the following is NOT a characteristic of plants used to make green manure? They;
- A. have many leaves

- B. are rich in plant nutrients
 - C. take time to decompose in the soil
 - D. grow rapidly
31. Which one of the following is NOT a use of water for recreation?
- A. surfing
 - B. bathing
 - C. boat racing
 - D. swimming
32. Which one of the following is not included in the immunization schedule for infants?
- A. tetanus
 - B. tuberculosis
 - C. malaria
 - D. measles
33. The following are symptoms of a certain water borne disease
- (i) vomiting
 - (ii) violent diarrhoea with mucus
 - (iii) abdominal pains
 - (iv) dehydration
- The disease described above is _____
- A. typhoid
 - B. bilharzia
 - C. malaria
 - D. cholera
34. Which one of the following crops stores food in the leaves?
- A. yams
 - B. onions
 - C. irish potatoes
 - D. sugarcane
35. A child who appears old with a wrinkled face is likely to be suffering from? _____
- A. marasmus
 - B. kwashiorkor
 - C. rickets
 - D. anaemia
36. Which one of the following statements is **TRUE** about clay soil?
- A. it has small air spaces
 - B. retains low amount of water
 - C. allows water to drain through easily
 - D. has large soil particles
37. Which one of the following crop pests is correctly matched with the part of the plant it damages?
- A. weevil-leaves
 - B. stalkborer- flowers
 - C. cutworms-stems
 - D. aphids-roots

38. The following are phases of the moon. Which one represents the new moon?



39. Which one of the following groups consists of only foods that provide energy to the body?

- A. maize, rice, milk
- B. cassava, beans, fish
- C. groundnuts, coconuts, sunflower
- D. meat, wheat, peas

40. Which one of the following practices would help in maintaining strong teeth in humans?

- A. using tooth picks after meals
- B. using teeth to open soda bottles
- C. eating chocolates and sweets
- D. visiting a dentist regularly

41. The following are characteristics of a certain animals

- (i) they are cold blooded
- (ii) their bodies are covered with scales
- (iii) they breathe by means of gills
- (iv) they live entirely in water

The animals are likely to be;

- A. fish B. reptiles C. amphibians D. birds

42. The part of the male reproductive system that regulates the temperature within the sperm zone is called?

- A. epididymis B. scrotum
- C. testes D. sperm duct

43. Which of the following consists of animal faeces, urine and beddings?

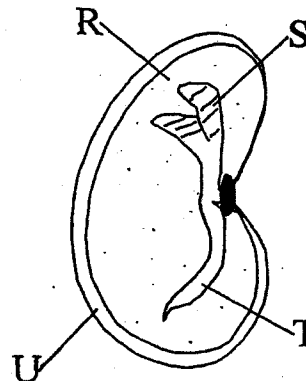
- A. compost manure B. green manure

C. artificial fertilizer D. farmyard manure

44. Digestion of fats and oils takes place in the

- A. liver
- B. duodenum
- C. stomach
- D. colon

Use the diagram below to answer questions 45-46



45. Which part is not correctly matched with its function?

- A. U-protects the inner parts of the seed
- B. T- develops into root
- C. R- allows water and air into the seed
- D. S- it develops into shoot

46. The above seed stores its food in the _____

- A. micropyle
- B. endosperm
- C. cotyledon
- D. seed coat

47. Which one of the following methods of grazing will involve the use of movable temporary fence?

- A. tethering B. paddocking
- C. stall feeding D. strip grazing

48. Which one of the following ways can be used to control both internal and external parasites?

- A. spraying with chemicals
- B. dipping animals with acaricide solution
- C. rotational grazing
- D. deworming animals

49. Sound cannot travel through;

- A. vacuum B. solids C. liquids D. gases

50. Which one of the following factors does not affect floating and sinking?

- A. size B. weight
- C. shape D. material