



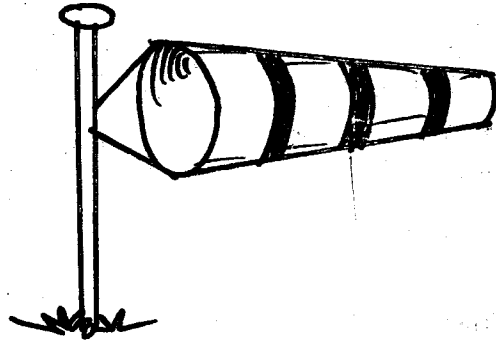
EFFECTIVE TRIAL EXAM STANDARD SEVEN TERM 1 - 2019 SCIENCE

Time: 1hr 40min

- Which one of the following problems related to teeth is **not** correctly matched with its other name?
A. Bleeding gums - gum disease
B. Tooth decay - plaque
C. Bad breath - bad smell
D. Cavities - holes
- The plumule and radicle forms the;
A. cotyledon B. embryo
C. dicotyledon D. monocot plant
- Which one of the following diseases is the odd one out?
A. Tetanus B. Tuberculosis
C. Measles D. Marasmus
- Pasture that has been cut, dried and preserved for future use is called;
A. fodder B. silo
C. silage D. hay
- The pulmonary vein carries;
A. deoxygenated blood to the lungs
B. oxygenated blood from the lungs
C. oxygenated blood to all parts
D. oxygenated blood to the lungs
- The following are methods of rotational grazing **except**;
A. paddocking B. herding
C. tethering D. strip grazing
- One of the following is **not** a proper care and maintenance of tools. Which one is it?
A. Tools should be stored in dry place
B. Tools should be handled with a lot of care
C. Tools should be cleaned after use
D. Tools should be thrown away when they break

- A metallic object can be made to float on water by changing;
A. weight B. shape
C. size D. colour

Study the instrument shown below:



- Which of the following statements is wrong about the instrument?
A. It shows both the strength and direction of wind
B. When it gets filled with air it pops up
C. It is open on both ends
D. The sock-shaped bag points to where wind is coming from
- The blood vessels through which deoxygenated blood flows to the heart is the;
A. venacava B. pulmonary artery
C. pulmonary vein D. aorta
- Cirrhosis is a disease of the liver which is commonly caused by excessive;
A. drinking of alcohol
B. inhaling glue
C. chewing of miraa
D. smoking of tobacco
- Which one of the following components of air is **correctly** matched to its percentage?
A. 21% Oxygen
B. 0.97% 78%
C. 0.03% 0.3%
D. 0.97% 21%

13. All the following are social effects of drug abuse **except**:

- A. truancy
- B. poor judgement
- C. marital conflict
- D. rape

14. Which one of the following is a misconception about AIDS?

- A. AIDS has no cure
- B. AIDS is real
- C. AIDS is caused by witchcraft
- D. HIV and AIDS are not the same

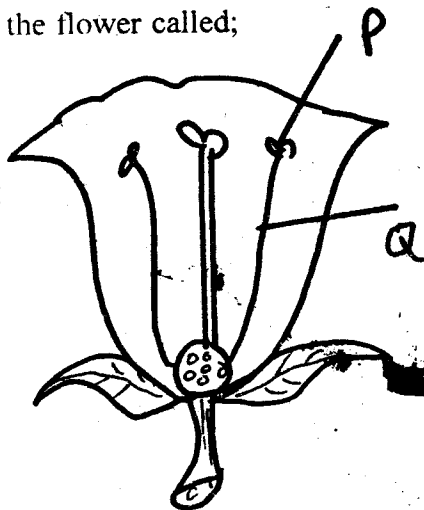
15. The following are protection behaviour in small animals **except**;

- A. hopping
- B. coiling
- C. biting
- D. running off

16. The function of fibre in the human diet is to;

- A. help in digestion of food
- B. prevent constipation
- C. provide the body with nutrients
- D. transport digested food

17. In the diagram shown below P and Q shows the part of the flower called;



- A. pistil
- B. anther
- C. pollen grains
- D. stamen

18. The type of soil erosion where small holes are formed in the soil is:

- A. rill
- B. sheet
- C. splash
- D. gully

19. Which one of the following groups consists of plants which are both non-green and non-flowering?

- A. Mould, moss, algae
- B. Ferns, mould, puffball
- C. Mould, mushroom, toadstool
- D. Algae, mushroom, toadstool

20. Which one of the following does **not** describe drug misuse?

- A. Taking prescribed drugs for a life time
- B. Taking a drug that is illegal
- C. Taking an underdose of prescribed drugs
- D. Taking drugs for leisure

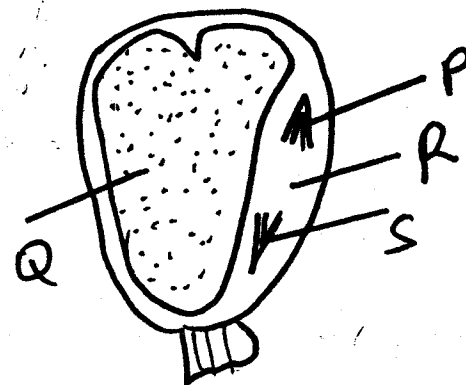
21. Which one of the following is **not** a list of major components of the environment?

- A. Plants, soil, water
- B. Animals, plants, air
- C. Sunlight, temperature, heat
- D. Soil, water, air

22. The female parts of a flower is made up of;

- A. anthers, filament, style, stigma
- B. stigma, filament, ovules, ovary
- C. style, anther, ovary, ovules
- D. style, stigma, ovary, ovules

The diagram below shows a maize grain;



23. The part that develops into a shoot is represented by;

- A. S
- B. R
- C. Q
- D. P

24. The component of a balanced diet that is important for developing bones is;

- A. proteins
- B. fats and oils
- C. minerals
- D. vitamins

25. Which one of the following groups consists of **only** plants with fibrous roots?
- Cowpeas, maize, wheat
 - Carrots, millet, water
 - Rice, millet, maize
 - Cowpeas, rice, carrots

26. Which two processes involve absorption of heat from the surroundings?
- Melting and expansion
 - Freezing and evaporation
 - Melting and freezing
 - Evaporation and condensation

27. Lack of adequate mineral salts in the diet can cause;
- marasmus and rickets
 - kwashiorkor and anaemia
 - kwashiorkor and marasmus
 - anaemia and rickets

28. Below is a description of a certain drug;
- It is shrub plant
 - Its leaves are chewed
 - It causes inability to fall asleep
- Which drug is described above?
- Cocaine
 - Mandrax
 - Miraa
 - Bhang

29. Which component of the environment covers the largest earth's surface?
- | | |
|-----------|----------|
| A. Air | B. Water |
| C. Plants | D. Soil |

30. Plants that depend on dead decaying matter for food are called;
- manufacturers
 - parasites
 - xerophytes
 - saprophytes

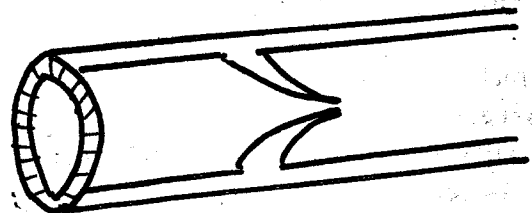
31. Which of the following sounds communicates a special message?
- Hooting
 - Whispering
 - Crying
 - Whistling

32. Which of the following is **not** a characteristic of veins?
- They have valves
 - Blood is under low pressure
 - All carry blood towards the heart
 - All carry deoxygenated blood

33. The following are characteristics of a certain weed;
- Has yellow ripe fruits
 - Has small thorns on stem and leaves
 - Hard to uproot
 - Produces purple or white flowers
- The weed described above is;
- mexican merigold
 - sodom apple
 - black jack
 - pigweed

34. The type of cloud that is mountainous and regularly changes its shape is also likely to;
- be dark in colour
 - hung high in the sky
 - be a sign of fine weather
 - have a flat base

35. Which type of blood vessel is drawn below?

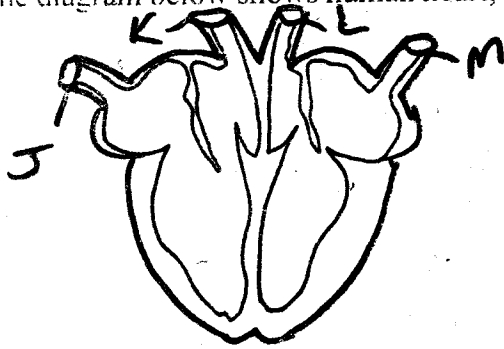


- | | |
|-------------|--------------|
| A. Venacava | B. Artery |
| C. Vein | D. Capillary |

36. Which one of the following is the **main** reason why farmers apply mulch?
- To control weeds
 - To control pests
 - To control soil erosion
 - To conserve moisture

37. A child who does **not** get adequate body building food is likely to suffer from;
- marasmus
 - kwashiorkor
 - anaemia
 - rickets

The diagram below shows human heart;



A girl was bitten by a snake in which part did the poison enter the heart through?

- A. J
- B. K
- C. L
- D. M

39. The vessels that have blood at low pressure are;

- A. J and K
- B. J and M
- C. K and M
- D. L and M

40. Which one of the following changes takes place during adolescence in boys **only**?

- A. Release of sex cells
- B. Fast body growth
- C. Chest and shoulder become broader
- D. Growth of pubic hair

41. Which one of the following statements is **correct**?

- A. DPT and measles vaccines are given at 14 weeks
- B. DPT vaccine is given at birth and at 10 weeks
- C. Polio and BCG vaccines are given at birth
- D. The first dose of polio is given at 6 weeks

42. The reason why coloured water is used in the construction of a liquid thermometer is to;

- A. make it contract faster
- B. make it visible
- C. increase its density
- D. make it absorb more heat

43. Absorption of digested food in the alimentary canal of human beings takes place in the:

- A. small intestines
- B. stomach
- C. duodenum
- D. large intestines

44. Which of the following is an opportunistic disease?

- A. Tuberculosis
- B. Syphilis
- C. Marasmus
- D. Typhoid

45. Which of the following is the last step when constructing a beam balance?

- A. Fixing the arm and the base
- B. Finding the balancing point of the arm
- C. Drilling a hole on the arm
- D. Suspending the tins on the arm

46. Which one of the following is **not** a condition necessary for seed germination?

- A. Warmth
- B. Sunlight
- C. Moisture
- D. Air

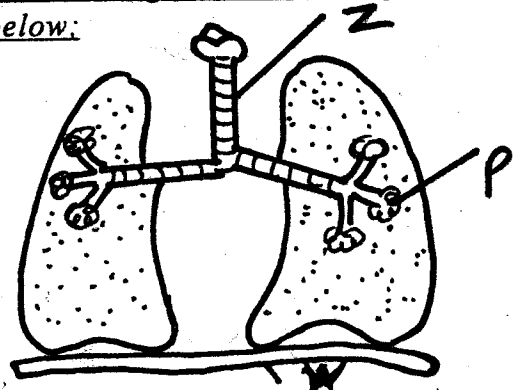
47. Why is a raingauge dug into the ground?

- A. For accuracy
- B. To collect more water
- C. To reduce evaporation of collected water
- D. To avoid ground water splashing into the collecting jar

48. Which one of the following is the reproductive organ of a plant?

- A. Roots
- B. Stem
- C. Flowers
- D. Leaves

Use the diagram to answer questions below:



49. The part labelled W sub-divides to form;

- A. bronchus
- B. bronchioles
- C. diaphragm
- D. cartilage

50. Which part contains tiny hairs and mucus that trap dust in air?

- A. Z
- B. Y
- C. P
- D. W

EFFECTIVE TRIAL EXAMS STANDARDS SEVEN TERM I - 2019

MARKING SCHEME

SCIENCE

STUDIES / CRE

1 C.	41 C.	1 D.	41 C.	81 C.
2 B.	42 B.	2 A.	42 C.	82 A.
3 D.	43 A.	3 C.	43 A.	83 D.
4 D.	44 A.	4 B.	44 D.	84 B.
5 B.	45 D.	5 D.	45 B A.	85 A.
6 B.	46 B.	6 A.	46 B B.	86 D.
7 D.	47 C.	7 C.	47 D.	87 B.
8 B.	48 C.	8 A.	48 A.	88 A.
9 D.	49 B.	9 D.	49 B.	89 D.
10 A.	50 A.	10 A.	50 A.	90 A.
11 A.		11 B.	51 D.	
12 D.		12 C.	52 C.	
13 B.		13 D.	53 C.	
14 C.		14 A.	54 B.	
15 A.		15 D.	55 B.	
16 B.		16 B.	56 C.	
17 D.		17 C.	57 C.	
18 C.		18 A.	58 A.	
19 C.		19 B.	59 D.	
20 A.		20 D.	60 C.	
21 C.		21 C.	61 D.	
22 D.		22 B.	62 A.	
23 D.		23 A.	63 B.	
24 C.		24 B.	64 D.	
25 C.		25 D.	65 C.	
26 A.		26 D.	66 A.	
27 D.		27 E.	67 B.	
28 C.		28 B.	68 D.	
29 B.		29 A.	69 C.	
30 D.		30 A.	70 A.	
31 A.		31 B.	71 B.	
32 D.		32 D.	72 D.	
33 B.		33 C.	73 C.	
34 A.		34 A.	74 B.	
35 C.		35 C.	75 B.	
36 D.		36 D.	76 D.	
37 B.		37 D.	77 A.	
38 A.		38 A.	78 C.	
39 B.		39 B.	79 B.	
40 C.		40 B.	80 D.	