

29.3 MATHEMATICS

29.3.1 Mathematics Paper 1

Name Index Number /

121/1
MATHEMATICS
Paper 1
Oct./Nov. 2008
 2½ hours

Candidate's Signature

Date

THE KENYA NATIONAL EXAMINATIONS COUNCIL

Kenya Certificate of Secondary Education

MATHEMATICS

Paper 1

2½ hours

Instructions to candidates

1. Write your name and index number in the spaces provided above.
2. Sign and write the date of examination in the spaces provided above.
3. The paper contains **TWO** sections: **Section I** and **Section II**.
4. Answer **ALL** the questions in **Section I** and any **five** questions from **Section II**.
5. All answers and working must be written on the question paper in the spaces provided below each question.
6. Show all the steps in your calculations, giving your answers at each stage in the spaces below each question.
7. Marks may be given for correct working even if the answer is wrong.
8. Non-programmable silent electronic calculators and KNEC Mathematical tables may be used, except where stated otherwise.

For Examiner's use only.

Section I

1	2	3	4	5	6	7	8	9	10	11	12	13	14	15	16	Total

Section II

17	18	19	20	21	22	23	24	Total

**Grand
Total**

--

This paper consists of 20 printed pages.

Candidates should check the question paper to ascertain that all the pages are printed as indicated and no questions are missing.



SECTION I (50 marks)

Answer **all** the questions in this section.

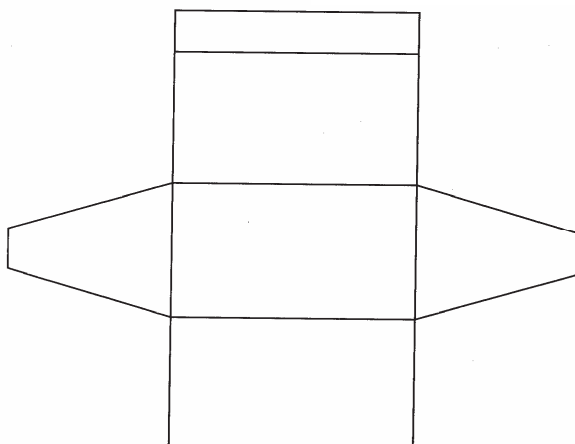
1 Without using a calculator, evaluate $\frac{-8 + (-5) \times (-8) - (-6)}{-3 + (-8) + 2 \times 4}$ (2 marks)

2 Simplify $\frac{27^{\frac{2}{3}} + 2^4}{32^{-\frac{3}{5}}}$ (3 marks)

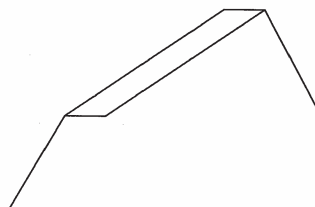
3 Simplify the expression $\frac{a^4 - b^4}{a^3 - ab^2}$ (3 marks)

4 Mapesa travelled by train from Butere to Nairobi. The train left Butere on a Sunday at 23 50 hours and travelled for 7 hours 15 minutes to reach Nakuru. After a 45 minutes stop in Nakuru, the train took 5 hours 40 minutes to reach Nairobi. Find the time, in the 12 hour clock system and the day Mapesa arrived in Nairobi. (2 marks)

5 The figure below shows a net of a solid.



Below is a part of the sketch of the solid whose net is shown above. Complete the sketch of the solid, showing the hidden edges with broken lines. (3 marks)



- 6 A fuel dealer makes a profit of Ksh 520 for every 1 000 litres of petrol sold and Ksh 480 for every 1 000 litres of diesel sold.
In a certain month the dealer sold twice as much diesel as petrol. If the total fuel sold that month was 900 000 litres, find the dealer's profit for the month. (3 marks)

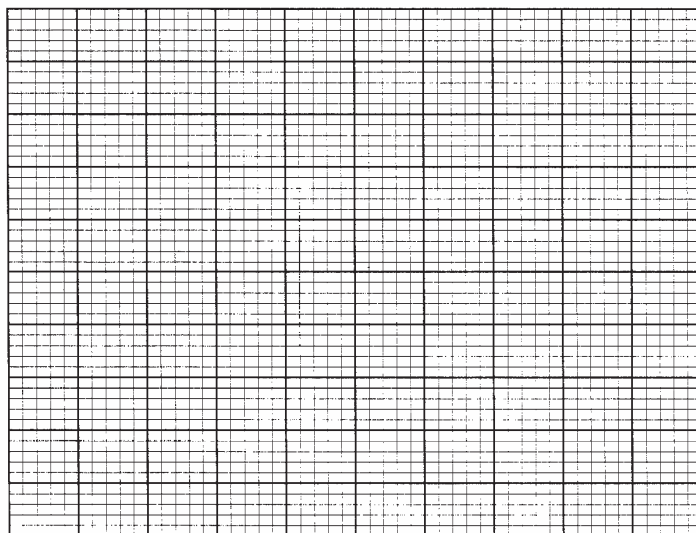
- 7 A liquid spray of mass 384 g is packed in a cylindrical container of internal radius 3.2 cm. Given that the density of the liquid is 0.6 g/cm^3 , calculate to 2 decimal places the height of the liquid in the container. (3 marks)

- 8 Line BC below is a side of a triangle ABC and also a side of a parallelogram BCDE.



Using a ruler and a pair of compasses only, construct:

- (i) the triangle ABC given that $\angle ABC = 120^\circ$ and $AB = 6 \text{ cm}$ (1 mark)
- (ii) the parallelogram BCDE whose area is equal to that of the triangle ABC and point E is on line AB. (3 marks)
- 9 A solid metal sphere of radius 4.2 cm was melted and the molten material used to make a cube. Find to 3 significant figures the length of the side of the cube. (3 marks)
- 10 An angle of 1.8 radians at the centre of a circle subtends an arc of length 23.4 cm. Find:
- (a) the radius of the circle (2 marks)
- (b) the area of the sector enclosed by the arc and the radii. (2 marks)
- 11 Three vertices of a rhombus ABCD are: $A(-4, -3)$, $B(1, -1)$ and $C(3, 4)$.
- (a) Draw the rhombus on the grid provided below. (2 marks)



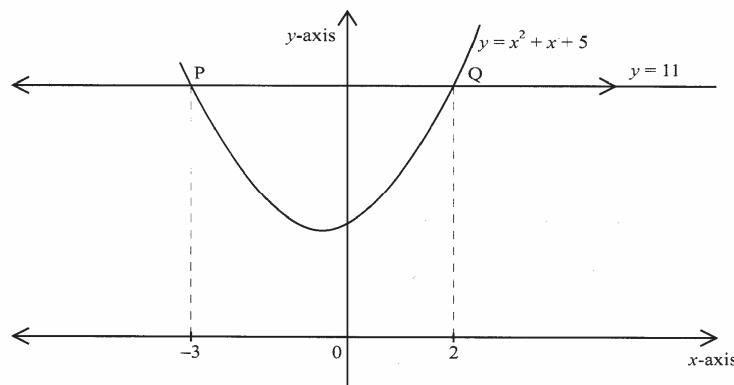
- (b) Find the equation of the line AD in the form $y = mx + c$, where m and c are constants. (2 marks)

- 12 Two matrices A and B are such that $A = \begin{pmatrix} k & 4 \\ 3 & 2 \end{pmatrix}$ and $B = \begin{pmatrix} 1 & 2 \\ 3 & 4 \end{pmatrix}$.
Given that the determinant of $AB = 4$, find the value of k . (3 marks)
- 13 A rectangular and two circular cut-outs of metal sheet of negligible thickness are used to make a closed cylinder. The rectangular cut-out has a height of 18 cm. Each circular cut-out has a radius of 5.2 cm. Calculate in terms of π , the surface area of the cylinder. (3 marks)
- 14 Given that $\log 4 = 0.6021$ and $\log 6 = 0.7782$, without using mathematical tables or a calculator, evaluate $\log 0.096$. (3 marks)
- 15 The equation of line L_1 is $2y - 5x - 8 = 0$ and line L_2 passes through the points $(-5, 0)$ and $(5, -4)$. Without drawing the lines L_1 and L_2 , show that the two lines are perpendicular to each other. (3 marks)
- 16 Solve the equation:
 $2 \cos 2\theta = 1$ for $0^\circ \leq \theta \leq 360^\circ$. (4 marks)

SECTION II (50 marks)

Answer any five questions in this section.

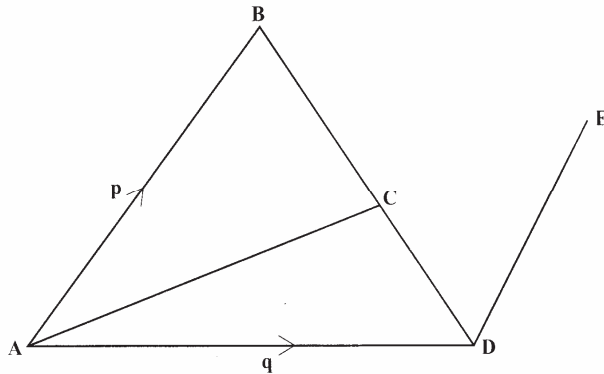
- 17 (a) The ratio of Juma's and Akinyi's earnings was 5:3. Juma's earnings rose to Ksh 8 400 after an increase of 12%.
Calculate the percentage increase in Akinyi's earnings given that the sum of their new earnings was Ksh 14 100. (6 marks)
- (b) Juma and Akinyi contributed all the new earnings to buy maize at Ksh 1 175 per bag. The maize was then sold at Ksh 1 762.50 per bag. The two shared all the money from the sales of the maize in the ratio of their contributions.
Calculate the amount that Akinyi got. (4 marks)
- 18 The figure below is a sketch of the curve whose equation is $y = x^2 + x + 5$. It cuts the line $y = 11$ at points P and Q.



(a) Find the area bounded by the curve $y = x^2 + x + 5$ and the line $y = 11$ using the trapezium rule with 5 strips. (5 marks)

(b) Calculate the difference in the area if the mid-ordinate rule with 5 ordinates was used instead of the trapezium rule. (5 marks)

19 In the figure below $AB = \mathbf{p}$, $AD = \mathbf{q}$, $DE = \frac{1}{2} AB$ and $BC = \frac{2}{3} BD$.



(a) Find in terms of \mathbf{p} and \mathbf{q} the vectors:

(i) \mathbf{BD} ; (1 mark)

(ii) \mathbf{BC} ; (1 mark)

(iii) \mathbf{CD} ; (1 mark)

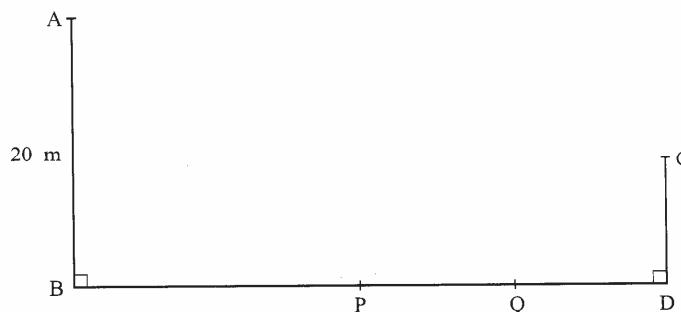
(iv) \mathbf{AC} . (2 marks)

(b) Given that $AC = kCE$, where k is a scalar, find:

(i) the value of k ; (4 marks)

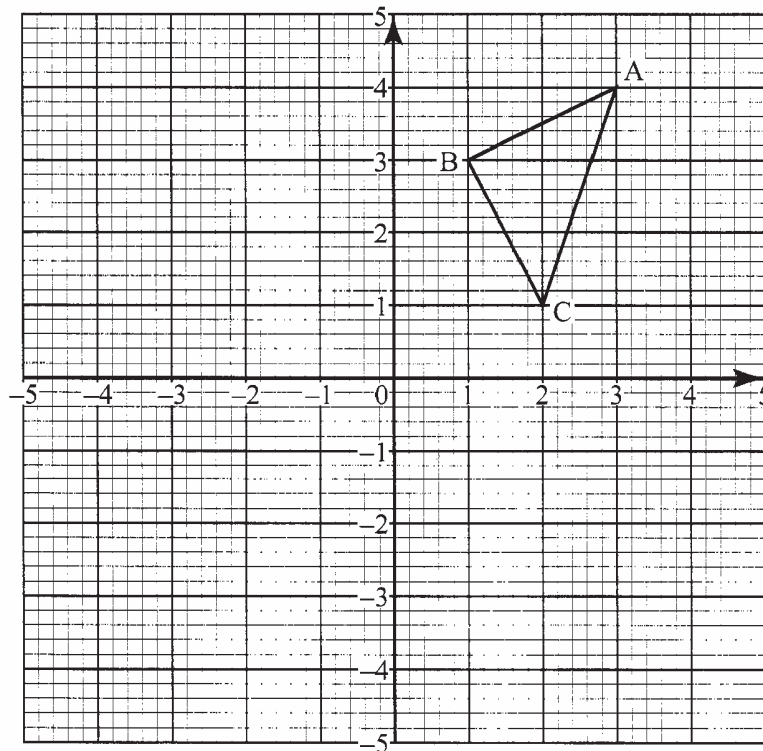
(ii) the ratio in which C divides AE . (1 mark)

20 The diagram below represents two vertical watch-towers AB and CD on a level ground. P and Q are two points on a straight road BD . The height of the tower AB is 20 m and road BD is 200 m.



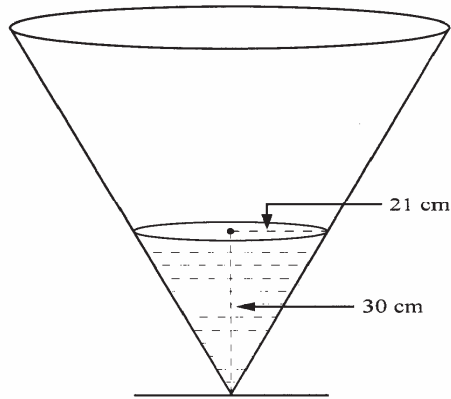
- (a) A car moves from B towards D. At point P, the angle of depression of the car from point A is 11.3° . Calculate the distance BP to 4 significant figures. (2 marks)
- (b) If the car takes 5 seconds to move from P to Q at an average speed of 36 km/h, calculate the angle of depression of Q from A to 2 decimal places. (3 marks)
- (c) Given that $QC = 50.9$ m, calculate:
- the height of CD in metres to 2 decimal places; (2 marks)
 - the angle of elevation of A from C to the nearest degree. (3 marks)

21 The diagram below shows a triangle ABC with A(3,4), B(1,3) and C(2,1).



- Draw $\Delta A'B'C'$, the image of ΔABC under a rotation of $+90^\circ$ about $(0,0)$. (2 marks)
- Draw $\Delta A''B''C''$ the image of $\Delta A'B'C'$ under a reflection in the line $y = x$. (2 marks)
- Draw $\Delta A'''B'''C'''$, the image of $\Delta A''B''C''$ under a rotation of -90° about $(0,0)$. (2 marks)
- Describe a single transformation that maps ΔABC onto $\Delta A'''B'''C'''$. (2 marks)
- Write down the equations of the lines of symmetry of the quadrilateral $BB''A'''A'$. (2 marks)

22 The diagram below represents a conical vessel which stands vertically. The vessel contains water to a depth of 30 cm. The radius of the water surface in the vessel is 21 cm. (Take $\pi = \frac{22}{7}$).



(a) Calculate the volume of the water in the vessel in cm^3 . (2 marks)

(b) When a metal sphere is completely submerged in the water, the level of the water in the vessel rises by 6 cm.

Calculate:

(i) the radius of the new water surface in the vessel; (2 marks)

(ii) the volume of the metal sphere in cm^3 ; (3 marks)

(iii) the radius of the sphere. (3 marks)

23 A group of people planned to contribute equally towards a water project which needed Ksh 2 000 000 to complete. However, 40 members of the group withdrew from the project. As a result, each of the remaining members were to contribute Ksh 2 500 more.

(a) Find the original number of members in the group. (5 marks)

(b) Forty five percent of the value of the project was funded by Constituency Development Fund (CDF). Calculate the amount of contribution that would be made by each of the remaining members of the group. (3 marks)

(c) Members' contributions were in terms of labour provided and money contributed. If the ratio of the value of labour to the money contributed was 6:19, calculate the total amount of money contributed by the members. (2 marks)

24 The distance s metres from a fixed point O , covered by a particle after t seconds is given by the equation;

$$s = t^3 - 6t^2 + 9t + 5.$$

(a) Calculate the gradient to the curve at $t = 0.5$ seconds. (3 marks)

(b) Determine the values of s at the maximum and minimum turning points of the curve. (4 marks)

(c) On the space provided, sketch the curve of $s = t^3 - 6t^2 + 9t + 5$. (3 marks)