

29.26

MUSIC (511)

29.26.3

Music Paper 1 (511/3)

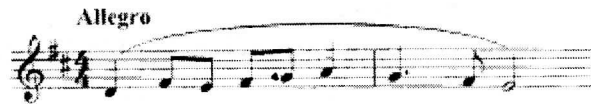


MANYAM FRANCHISE
Discover! Learn! Apply

Answer questions from **all** sections.

SECTION A: BASIC SKILLS (32 marks)

- 1 **Either** (a) Continue the following opening to make a melody of sixteen bars for voice, introducing syncopation and tempo variations. Modulate to the dominant and then back to the tonic. Add phrase marks. (12 marks)



- Or (b) Using staff notation, write a melody and fit in the following words. Add phrase marks. (12 marks)

*Success is counted sweetest
By those who ne'er succeed
To comprehend a nector
Requires a sores.*

- 2 Harmonize the melody below for Soprano, Alto, Tenor and Bass (SATB). Choose appropriate chords from the following: I, II, IV, V and VI. (20 marks)



SECTION B: HISTORY AND ANALYSIS (48 marks)

3 **AFRICAN MUSIC**

- (a) For each of the following dances, name the community and occasion of the performance. (4 marks)

- (i) *Ramogi*
- (ii) *Mumburo*
- (iii) *Mwazindika*
- (iv) *Ribina*

- (b) Outline any **three** skills applied in playing the *chivoti*. (3 marks)

(c) Give the classification of each of the instruments listed below. The first one has been done as an example. (3 marks)

- (i) *Orutu* – chordophone
- (ii) *awleri*
- (iii) *adeudeu*
- (iv) *Mukanda*
- (v) *Marimba*
- (vi) *uta*
- (vii) *ebune*

(d) Outline **four** ways in which modern technology has influenced the performance of traditional folksongs. (4 marks)

4 WESTERN MUSIC

Answer any **two** of the questions (a), (b), (c), and (d).

(a) CLAUDIO MONTEVERDI

- (i) Name any **two** operas by Monteverdi. (1 mark)
- (ii) Apart from opera, what other type of work did Monteverdi compose? (1 mark)
- (iii) Describe Monteverdi's *dual style*. (2 marks)
- (iv) State any **three** features that characterise Monteverdi's music. (3 marks)

(b) RAMEAU, JEAN-PHILIPPE

- (i) Outline any **three** sources that influenced Rameau as a composer. (3 marks)
- (ii) State any **four** ways through which Rameau shared his musical experience with others. (4 marks)

(c) GLUCK, CHRISTOPH WILLIBALD

- (i) Outline any **three** experiences which influenced Gluck's musical style and production. (3 marks)
- (ii) State any **four** contributions by Gluck to the opera reform. (4 marks)

(d) JOHANNES BRAHMS

- (i) Outline any **four** characteristics of Brahms' piano music. (4 marks)
- (ii) State any **three** other types of works by Brahms. (3 marks)

5 PRESCRIBED TRADITIONAL AFRICAN MUSIC

Giriama Folksong – *Muserigo* by Likoni Primary School.

(a) Describe the opening section of the performance in terms of:

- (i) Instrumentation (1 mark)
- (ii) Voices (1 mark)

(b) Describe any **three** vocal forms of call and response style that feature in the performance. (6 marks)

(c) Name any **two** other vocal techniques used to vary the performance. (2 marks)

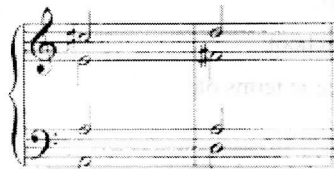
6 PRESCRIBED WESTERN MUSIC SET WORK

Mozart W.A.: Symphony No. 40 in G Minor K.550.

- (a) Explain how the theme is played at the beginning (2 marks)
- (b) With reference to bar numbers, give examples of each of the following:
 - (i) Scalar movements of more than an octave by two instruments (1 mark)
 - (ii) Whole orchestra playing in unison (1 mark)
 - (iii) Chromatic movement of instruments in the string family (1 mark)
- (c) In which bars is the theme restated and in which key is it? (2 marks)
- (d) In which bars has the music modulated to the relative major? (1 mark)
- (e) Which device can best explain the playing of bassoon and cello from bars 28-33? (1 mark)
- (f) Give the name of one transposing instrument of the brass family used in this Symphony. (1 mark)

SECTION C: GENERAL MUSIC KNOWLEDGE

- 7
- (a) (i) State any **three** roles of folk songs in a marriage ceremony. (3 marks)
 - (ii) Name any **two** traditional dances in which shaking of shoulders is a dominant feature. (2 marks)
 - (b) State the meaning of any **five** of the following: (5 marks)
 - (i) Baritone.
 - (ii) drone
 - (iii) programme music
 - (iv) Diminuendo
 - (v) Melisma
 - (vi) Calando
 - (vii) Contrapuntal.
 - (c) Re-write the following cadence in open score using the treble, alto, tenor and bass clefs. (6 marks)



- (d) State:
 - (i) two advantages of music in public transport. (2 marks)
 - (ii) two disadvantages of music in public transport. (2 marks)