

29.14

ART AND DESIGN (442)

29.14.1

Art & Design Paper 1 (442/1)



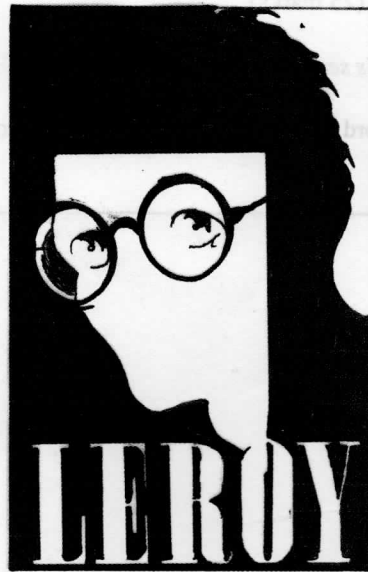
SECTION A (20 marks)

Answer **ALL** the questions in this section in the spaces provided.

- 1 (a) Study the drawing below.



- Identify the **two** facial expressions conveyed by the drawing. (2 marks)
- (b) Distinguish between positive and negative space in a work of art. (2 marks)
- (c) Explain why pink and maroon are considered a tint and shade respectively. (2 marks)
- (d) Explain how tonal, textural and decorative effects are achieved in a mosaic design. (3 marks)
- (e) The poster displayed below is for an eye glass company.



Describe **three** outstanding features in the illustration which make the message clear and effective. (3 marks)

- (f) State the **main** factor that determines the choice of materials, tools and technique for making an ornament. (1 mark)
- (g) Identify **one** distinctive characteristic of a twill weave. (1 mark)
- (h) Study the composition below.



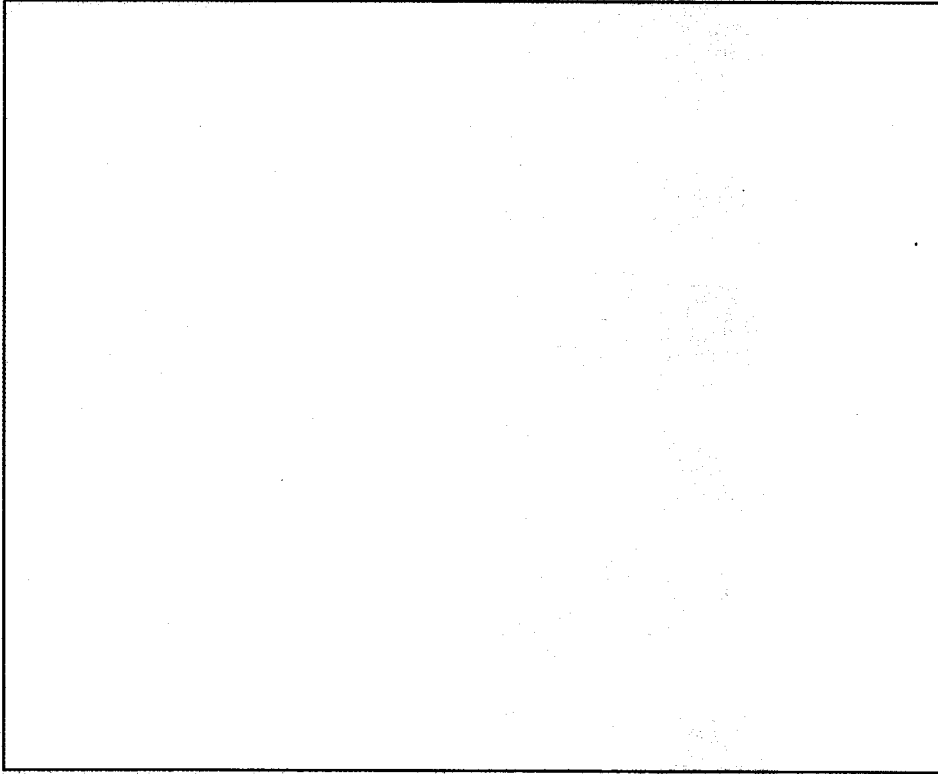
Give **two** reasons why the leading horse rider in the composition is the centre of interest.

- (i) State **one** effect of wax when used in fabric decoration. (2 marks)
- (j) Name and explain **two** types of clay formation. (1 mark)
- (k) Name and explain **two** types of clay formation. (3 marks)

SECTION B (25 marks)

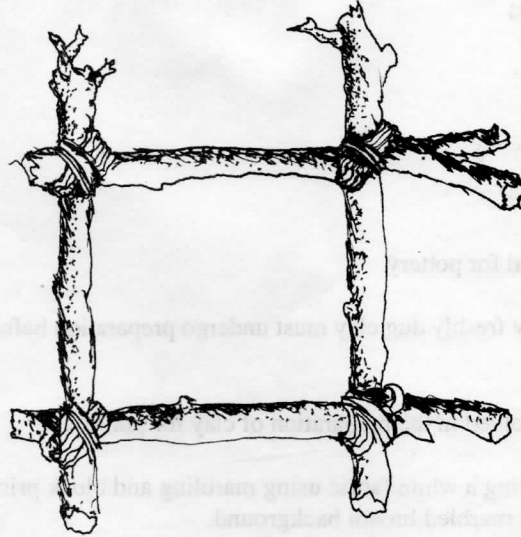
Answer ALL the questions from this section in the spaces provided.

- 2 In the space provided below, construct the word "Perspective" in **three** dimensions and use block capital letters to illustrate the concept. (5 marks)



- 3 (a) Distinguish between a logo and a letterhead for a company and explain their relationship. (4 marks)
- (b) Name the **two** main components of a business card for a person employed in a company. (2 marks)
- 4 In the space provided below, draw a section of the colour wheel and label it to show the analogous relationship of yellow and blue colours. (5 marks)
- 5 Explain how balance, rhythm and movement can be identified in sculpture. (3 marks)

6 The illustration below is a device for a process in an art technique.

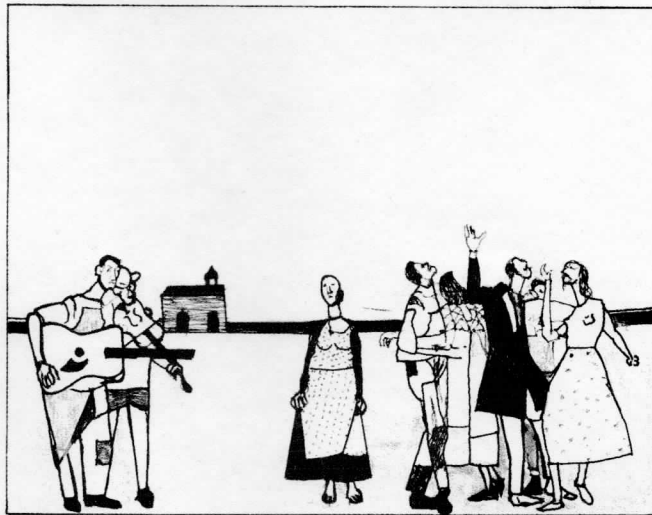


- (a) Name the device and the technique. (2 marks)
- (b) On the space provided below, use a pencil, biro or pen and ink to sketch the device and show the setting up and beginning of the process. (4 marks)

SECTION C (15 marks)

Answer any **ONE** question from this section.
Write your answer in the space provided after question 9.

7



Study the picture above and describe it under the following guidelines:

- (a) style and type of art; (3 marks)
- (b) format and use of space; (3 marks)
- (c) shape and proportion; (3 marks)
- (d) depth and distance; (3 marks)
- (e) theme and subject matter. (3 marks)
- 8 (a) Define clay as a material for pottery. (2 marks)
- (b) State **three** reasons why freshly dug clay must undergo preparation before being used. (3 marks)
- (c) Describe the stages involved in the preparation of clay for pottery. (10 marks)
- 9 Describe the process of decorating a white fabric using marbling and block printing techniques to obtain prints on a marbled brown background. (15 marks)

