

29.13 HOME SCIENCE (441)

29.13.1 Home Science Paper 1 (441/1)



MANYAM FRANCHISE
Discover! Learn! Apply

SECTION A (40 marks)

Answer all the questions in this section in the spaces provided.

- 1 What do you understand by the term food hygiene? (1 mark)
- 2 Give two functions of sodium in the body. (2 marks)
- 3 State two disadvantages of reheating food. (2 marks)
- 4 Highlight two characteristics of buffet service. (2 marks)
- 5 Identify a nutritional disorder associated with high consumption of each of the following: (1 mark)
 - (i) sugar
 - (ii) fluorine
- 6 Give two reasons why butter is suitable for creaming in cake making. (2 marks)
- 7 Explain the following terms: (2 marks)
 - (i) inflation
 - (ii) consumer rights
- 8 State two remedies for morning sickness during pregnancy. (2 marks)
- 9 Give two reasons why weaning a baby too early is discouraged. (2 marks)
- 10 Name two opportunistic diseases related to HIV and AIDS. (1 mark)
- 11 Give one reason for increasing iron in a lactating mother's diet. (1 mark)
- 12 List two types of brushes used for removing dirt from surfaces in the home. (2 marks)
- 13 Define the term value in relation to colour. (1 mark)
- 14 Name two insects which would cause poisonous stings. (1 mark)
- 15 Give two surfaces in the house where a low all-round flower arrangement may be used. (1 mark)
- 16 Mention two physical changes in puberty that are unique to girls. (2 marks)
- 17 (i) List two types of bleaches and give one example in each case. (2 marks)
(ii) Give another use of laundry blue on garments apart from whitening. (1 mark)

- 18 Arrange the following laundry processes in the correct order. (2 marks)
- Stain removal (i)
- Steeping (ii)
- Repairing (iii)
- Sorting (iv)
- 19 Identify **two** types of “eyes” used for completing the hook fastening in garment construction. (1 mark)
- 20 Mention **three** desirable qualities of fabric for making P.E. shorts. (3 marks)
- 21 State **two** temporary stitches used to hold fullness before making permanent stitches. (1 mark)
- 22 State **two** characteristics of a well made dart. (2 marks)
- 23 Give **one** point to bear in mind when cutting a worked button hole. (1 mark)
- 24 Differentiate between a bound opening and a continuous wrap opening. (2 marks)

SECTION B (20 marks)

Answer question 25 in this section in the spaces provided.

- 25 You are planning to travel with your one year old sister. Give the procedure you would use to:
- (a) clean the baby’s plastic cup you will use on the way; (4½ marks)
- (b) clean an aluminium saucepan that was previously used to boil the baby’s milk; (5 marks)
- (c) launder a coloured linen shirt with a fresh tea stain. (10½ marks)

SECTION C (40 marks)

Answer any two questions in this section in the spaces provided at the end of the section.

- 26**
- (a) What do you understand by comparative shopping? (2 marks)
 - (b) Identify **four** functions of the Kenya Consumer Association. (4 marks)
 - (c) Explain **three** functions of fats and oils in the body. (6 marks)
 - (d) Explain how the following factors contribute to successful meal planning:
 - (i) Nutritional balance;
 - (ii) Climate;
 - (iii) Texture;
 - (iv) Individual requirements. (8 marks)
- 27**
- (a) Explain **three** processes to be carried out on a fabric before laying out patterns. (6 marks)
 - (b) Outline **five** processes carried out on the skirt of an apron with a bib in readiness for attachment. (5 marks)
 - (c) Highlight **five** reasons why timely repair of household articles is important. (5 marks)
 - (d) Draw a symbol for each of the following care instructions:
 - (i) handwash with temperature the hand can withstand;
 - (ii) hang, to dry on a clothe's line;
 - (iii) do not dry-clean;
 - (iv) use a cool iron of about 120°C. (4 marks)
- 28**
- (a) State **three** advantages of lining curtains. (3 marks)
 - (b) Outline **six** precautions to take when using electrical appliances in the home. (6 marks)
 - (c) Identify **five** activities carried out in the management of amoebic dysentery. (5 marks)
 - (d) Highlight **six** points to observe when looking after a sick person. (6 marks)

29.13.2 Home Science Paper 2 (441/2)

A pattern of a pair of shorts is provided. You are advised to study the sketches, instructions and the layout carefully before you begin the test.

Materials provided

- 1 Pattern pieces
 - A Short Front
 - B Short Back
 - C Pocket
 - D Waistband
 - E Front Short facing
 - F Back Short facing
- 2 Plain light weight cotton fabric 50 cm long by 90 cm wide.
- 3 Cotton sewing thread to match the fabric.
- 4 One large envelope.

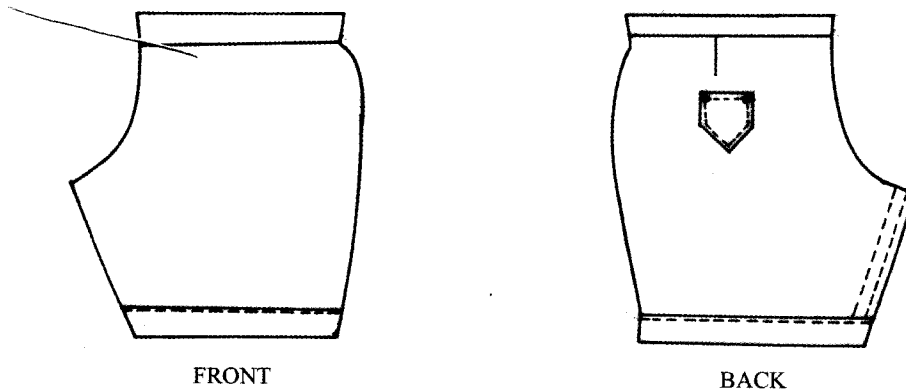
THE TEST

Using the materials provided, cut out and make the **LEFT LEG** of the shorts to show the following processes:

- (a) Making of the back dart.
- (b) Preparing and attaching the pocket.
- (c) Working of the inner leg seam using machine fell seam.
- (d) Working of the side seam using an open seam.
- (e) Preparing the facings and attaching them onto the lower edge of the shorts.
- (f) Fixing the facing using machine stitching.
- (g) Preparing and attaching the waistband.
- (h) Finishing the waistband using hemming stitches.

At the end of the examination, firmly sew on your work, on a single fabric, a label bearing your name and index number. Remove the needle and pins from your work, then fold your work neatly and place it in the envelope provided. **Do not put scraps of fabric in the envelope.**

VIEW OF A PAIR OF SHORTS



LAYOUT (NOT DRAWN TO SCALE)

