

7.0 SOCIAL STUDIES

The number of candidates that sat for the KCPE social studies increased from 724,388 in 2010 to 766,355 in 2011.

7.1 Candidates General Performance

Table 16: candidates' performance for the last four years

Year	Candidature	Maximum mark	Mean	Standard Deviation
2011	766,355	59	33.13	9.12
2010	724,388	60	38.88	9.74
2009	719,712	59	37.46	9.80
2008	688,162	60	36.81	8.88

The following observations can be made from the table above:

- The year 2011 had the highest candidature over the four-year period.
- The spread in performance decreased slightly to 9.12 in 2011 from 9.74 in 2010.
- The mean reduced from 38.88 in 2010 to 33.13 in 2011

7.2 Syllabus coverage

Table 17: Syllabus coverage in the year 2011 KCPE Social Studies examination

Sn.	Content area	No. of Items	Percentage
1.0	Physical environment	10	17%
2.0	People and population	5	8%
3.0	Social relations and Cultural activities	6	10%
4.0	Resources and economic activities	22	37%
5.0	Political developments and systems	8	13%
6.0	Citizenship	1	2%
7.0	Democracy and Human Rights	2	3%
8.0	Law, Peace and Reconciliation	2	3%
9.0	The Government of Kenya	4	7%
	Total	60	100%

From the above table, it can be noted that syllabus coverage was good based on the weighting of each of the topics in the syllabus. Most of the items were drawn from three main topics: **resource and economic activities (37 %)**, **physical environment (17%)**, **Political developments and systems (13%)**. The three topics cover a significant proportion of the syllabus while topics **Citizenship, Democracy and Human Rights and Law, Peace and Reconciliation** are relatively short and hence fewer items drawn from them.

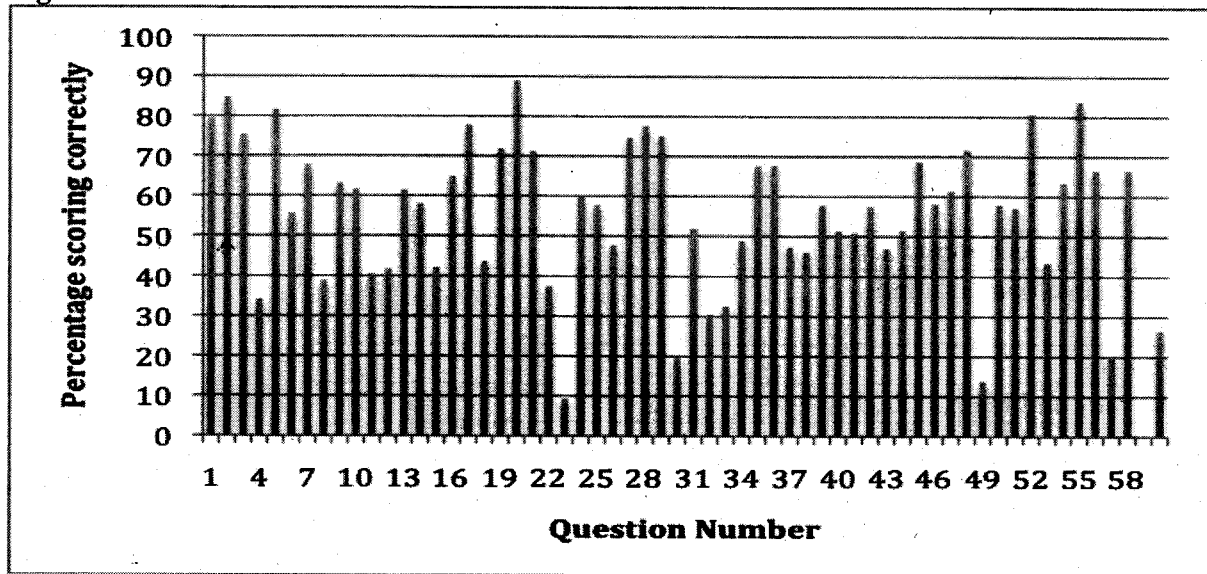
7.3 Distribution of cognitive skills

Table 18: Distribution of Cognitive skills in the 2011 Social Studies paper

Skills Tested	No. of Items	Percentage
Knowledge	2	3%
Comprehension	12	20%
Application	17	28%
Analysis	15	25%
Synthesis	9	15%
Evaluation	5	8%
Total	60	100%

From **table 18** above, it can be observed that all skills in the cognitive domain were tested in the 2011 Social Studies examination. Most of the items tested application (25%) followed by analysis (25 %) and comprehension (20.0%) skills.

Figure 7



7.4 Questions with facility index of 30% and below.

The 2011 KCPE Social Studies paper had 4 items with a facility index of 30% or lower as shown on table 19 below. These questions with a facility index of less than 30% will be discussed.

Table 19

Question number	23	30	49	57
% scoring correctly	9.33	19.65	13.80	20.21

The analysis of the above items is based on the 766,355 candidates who sat for the KCPE Social Studies paper in 2011.

Question 23

Which one of the following is a reason why Lewanika allowed Christian missionaries to establish stations in the Lozi kingdom?

- A. He desired to use them to fight his enemies.
- B. He obeyed the advice of khama of Ngwato.
- C. He wanted them to spread Christianity.
- D. He wanted them to assist him become wealthy.

Response pattern

Option	A	*B	C	D
% choosing option	26.22	9.33	49.61	14.03
Mean mark	35.77	33.24	32.04	33.14

This was a question that tested specific reasons. The candidates were supposed to understand different reasons for the collaboration of the Lozi. However, it seems the candidates knew the general reasons for collaboration of all African communities. The correct answer was **B. (He obeyed the advice of khama of Ngwato).**

It is important for teachers to teach candidates reasons for collaboration for specific communities, but not to generalise them to all communities.

Question 30:

Which one of the following is the **main** effect of HIV and AIDS?

- A. It lowers life expectancy.
- B. It reduces the fertility rates.
- C. It leads to increased deaths.
- D. It lowers the birth rates.

Response pattern

Option	*A	B	C	D
% choosing option	19.65	8.98	63.17	7.47
Mean mark	34.15	27.78	34.13	30.63

This was an evaluation question where all the answers were correct but the candidate was supposed to choose the main effect.

The correct answer was **A (It lowers life expectancy).**

Question 49:

Kenya's philosophy of African Socialism is important in that it

- A. Promotes traditional systems of government
- B. Encourages individuals to get wealth
- C. Encourages people to work as a team
- D. Promotes the use of different currencies.

Response pattern

Option	A	B	C	D
% choosing option	13.80	8.34	62.92	13.92
Mean mark	29.46	28.44	35.71	29.24

This was question was specific on African Socialism. Candidates seem to be familiar with Harambee philosophy, which advocates coming together to work as a team.

The correct answer was **A (promotes traditional systems of government)**.

It is important for teachers to train candidates to take time to read and understand the demands of a question and avoid rushing to pick an answer based on the familiarity of a term in the options.

Question 57:

Which one of the following statements describes litigation as a way of resolving conflict in the society?

- A. Taking the matter to court.
- B. Asking for forgiveness.
- C. Discussing with one another.
- D. Involving a third party.

Response pattern

Option	A	B	C	D
% choosing option	20.21	26.97	41.78	9.98
Mean mark	34.52	31.36	35.94	16.20

The question required the understanding of the methods of resolving conflicts.

The correct answer was **A (taking the matter to court)**.

GENERAL COMMENTS

In 2011 teachers did a commendable work and kept the performance of Social Studies fairly high. Teachers should continue to encourage the candidates to have a positive attitude towards the subject, and advise the pupils and candidates to read questions carefully before attempting them to avoid getting mixed up.