

8.0 ISLAMIC RELIGIOUS EDUCATION (IRE)

In the year 2011 39,291 candidates sat for the Kenya Certificate of Primary Education (KCPE) Islamic Religious Education (IRE) as compared to 35,083 candidates who sat in 2010. The table below shows the statistics for the paper for the last four years.

Table 24 : The National Raw Mark for the KCPE (IRE) for the last four years

Year	Candidature	Mean	Maximum Mark	Standard Deviation
2008	26,634	19.89	30	6.02
2009	29,989	18.25	30	5.65
2010	35,083	19.48	30	6.17
2011	39,291	20.59	30	5.56

The following observations can be made from the table above:

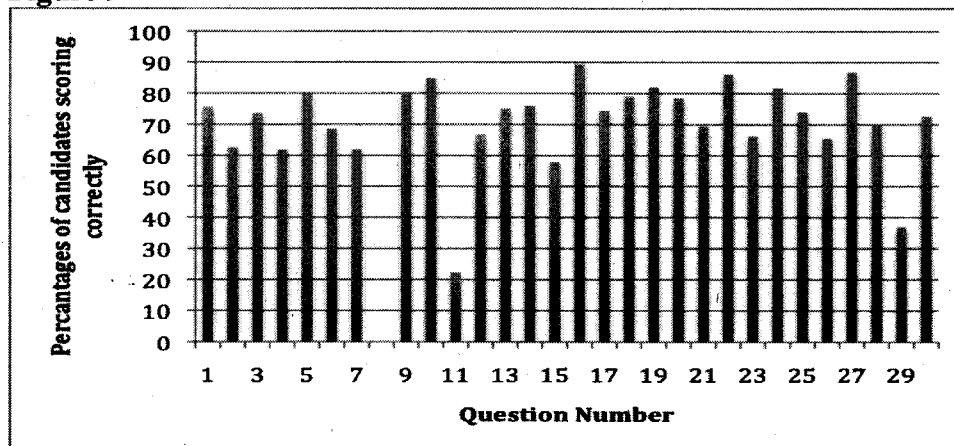
- (i) There was a slight increase in the number of candidates taking Islamic Religious Education at KCPE level in 2011 as compared to year 2010. The candidature increased by 4208 (10.7%)
- (ii) There was an improvement in the performance of candidates in the year 2011 as attested by the mean of 20.59 when compared to that of 19.48 in the year 2010.

Analysis of the Candidates' Performance

This report is based on a total of 39,291 candidates who sat the Islamic Religious Education examination in 2011.

The report will give the relative difficulty of each of the thirty (30) items shown in the figure below. It will also discuss analysis of candidates' responses in the two relatively poorly performed questions.

Figure 9



Analysis of Relatively Poorly Performed Questions

The table below shows candidates' performance in the two relatively poorly performed questions in the year 2011 KCPE (IRE) examination.

Table 25: Relatively Poorly Performed Question in the 2010 KCPE (IRE) Examination

Question Number	11	29
% scoring correctly	22.34	36.92

Question 11

The main reason why hard work is important to Muslims is because it

- A. discourages laziness
- B. discourages begging
- C. is a way of earning lawfully
- D. is a way of creating wealth

Response Patterns

Option	A	B	C*	D
% choosing the option	37.47	25.39	22.34	13.38
Mean mark in other questions	21.41	21.20	21.47	16.84

The question was on the topic of Akhlaq. The question expected the candidates to choose the main reason why work is important, but a third of the candidates chose Option A which is also a reason but not the main one.

The correct response to this question was option C (is a way of earning lawfully). The correct option was chosen by 22.34% of the candidates. These were the brightest candidates as is attested by their mean of 21.47 out of 30 in the other questions.

Question 89

A visit to the Prophet's mosque in Madina during Hajj is important because

- A. it is a ritual of Hajj
- B. it is the second holiest mosque in Islam
- C. it is the first mosque in Islam
- D. it is where the sahaba were buried

Response Patterns

Option	A	B*	C	D
% choosing the option	20.87	36.92	23.20	17.32
Mean mark in other questions	19.62	22.96	19.00	19.75

The question was on Devotional Acts. Candidates were expected to know the importance of visiting the Prophet's mosque in Madina. The correct option was B (it is the second holiest mosque in Islam) was chosen by 36.92% of the total candidates. These were the brightest candidates as it attested by their mean of 22.96 out of 30 in the rest of the items. The rest of the candidates who chose options A, C and D were actually doing guesswork.