

4.0 PART TWO: THE YEAR 2012 KCSE EXAMINATION QUESTION PAPERS

4.1 ART & DESIGN (442)

4.1.1 Art & Design Paper 1 (442/1)

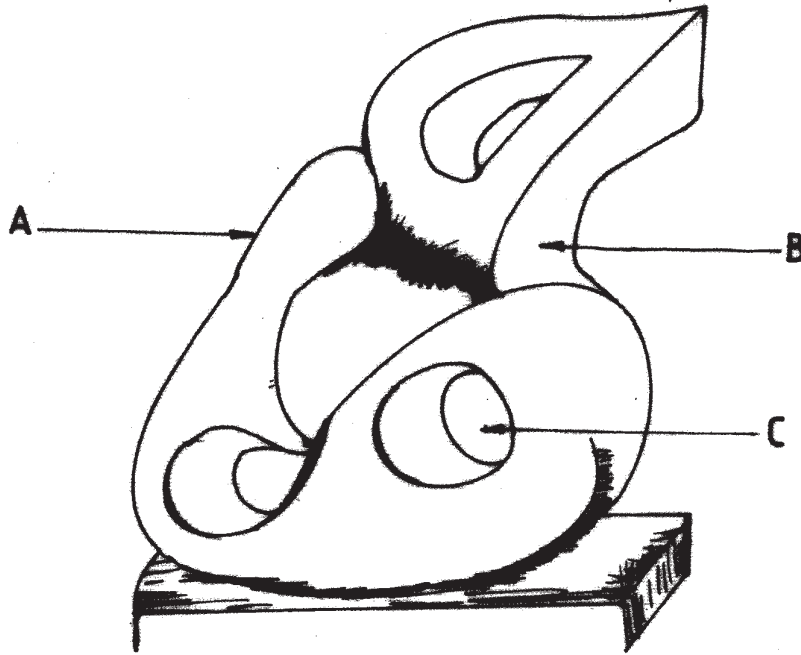


MANYAM FRANCHISE
Discover! Learn! Apply

SECTION A (20 marks)

Answer *all* the questions in this section in the spaces provided.

- 1 (a) The illustration below represents a sculptural form.



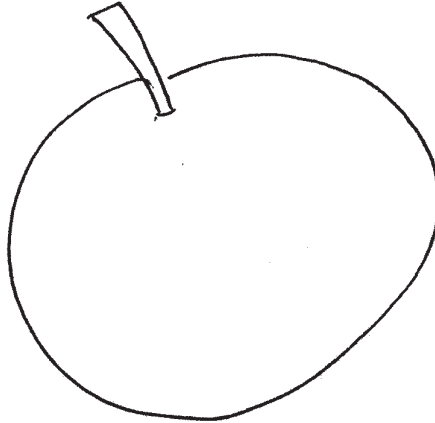
- Name the parts marked A, B and C. (3 marks)
- (b) What is visual art? (1 mark)
- (c) Differentiate between hue and pigment. (2 marks)
- (d) State **two** advantages of asymmetrical balance in a composition. (2 marks)
- (e) Explain the role of critique in art. (1 mark)
- (f) Explain the **main** reason for priming canvas before painting. (1 mark)
- (g) State the **four** main functions of shape in 2-D artwork. (4 marks)
- (h) Explain the term “Design brief”. (1 mark)
- (i) Distinguish between product and communication design. (2 marks)
- (j) Give **three** reasons why montage is regarded as a kind of collage. (3 marks)

SECTION B (25 marks)

Answer all the questions in this section in the spaces provided.

- 2 Using the stippling technique, create three dimensional effect on the form below.

(4 marks)

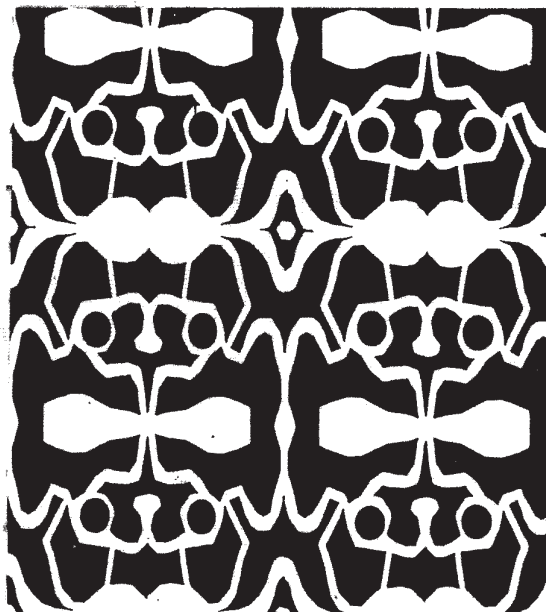


- 3 Study the colour chart below and fill in the missing colours.

(5 marks)

Red - Orange		
	Yellow	
Blue - Violet		Blue - Green

- 4 The illustration below represents a repeat pattern formed from a single motif.



Identify and sketch the motif in the space provided below.

(5 marks)

5 What is meant by the following terms in pottery?

- (a) Stamping (1 mark)
- (b) Burnishing (1 mark)
- (c) Slip trailing (1 mark)
- (d) Incising (1 mark)
- (f) Excising (1 mark)

6 The illustration below represents a printing technique.



- (a) Identify the technique. (1 mark)
- (b) In the space provided below, sketch the image as it would appear when printed on a surface. (3 marks)
- (c) Explain what is meant by direct transfer and indirect transfer of ink onto the printing surface in the printing process. (2 marks)

SECTION C (15 marks)

Answer any *one* question from this section. Write your answer in the space provided after question 9.

7 Using **two** appropriate illustrations for each, explain the meaning of the following terms used in Tie and Dye technique.

- (a) Tritik (5 marks)
- (b) Marbling (5 marks)
- (c) Pleating (5 marks)

8 Analyse clay as a material for pottery under the following sub-headings.

- (a) Properties (6 marks)
- (b) Classification (4 marks)

- (c) Bone dry clay (1 mark)
 - (d) Leatherhard (1 mark)
 - (e) Slip (1 mark)
 - (f) Grog (1 mark)
 - (g) Greenware (1 mark)
- 9**
- (a) What is a shed as applied in the weaving technique? (1 mark)
 - (b) With the help of an appropriate illustration for each, describe the following processes:
 - (i) making a dowel loom; (4 marks)
 - (ii) warping the loom; (4 marks)
 - (iii) weaving the first four rows of a $\frac{2}{2}$ twill weave. (6 marks)