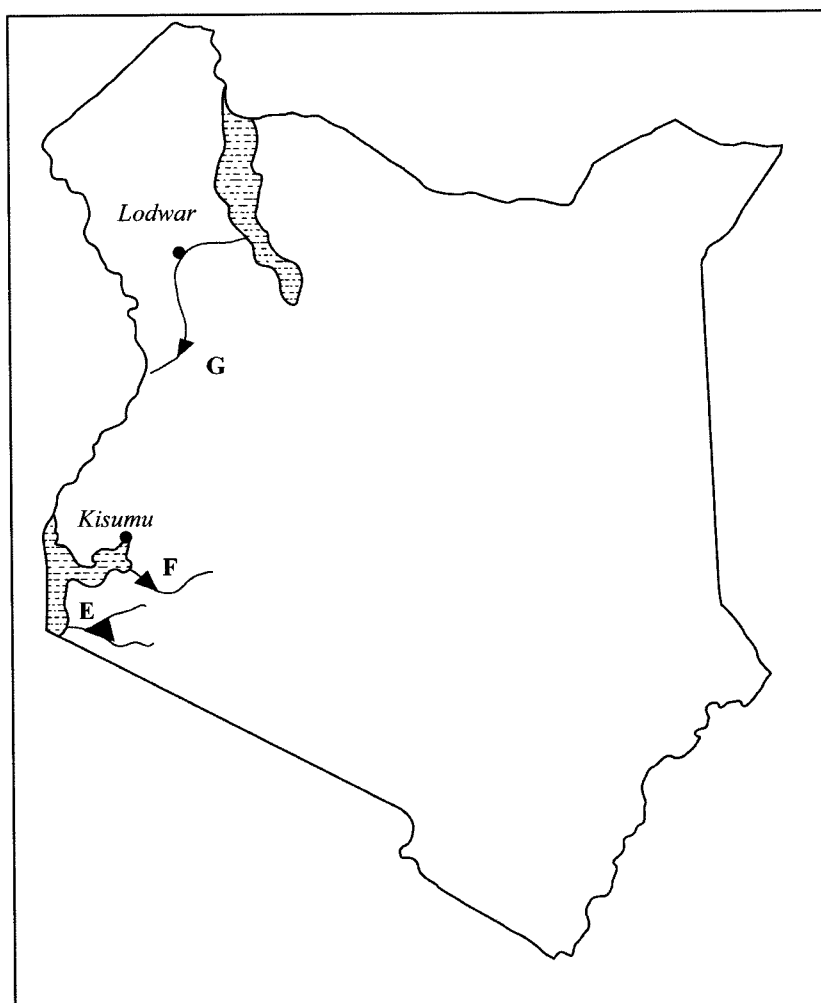


3.10.2 Geography Paper 2 (312/2)

SECTION A: (25 marks)

Answer all the questions in this section.

- 1 (a) Define the term environment. (2 marks)
- (b) Give **three** effects of air pollution in major urban centres. (3 marks)
- 2 (a) Identify **three** factors that influence the occurrence of minerals. (3 marks)
- (b) Name the area where the following minerals are mined in Kenya:
 - (i) diatomite; (1 mark)
 - (ii) salt. (1 mark)
- 3 (a) Distinguish between forest and forestry. (2 marks)
- (b) Identify **three** activities that may be undertaken in your school to conserve trees. (3 marks)
- 4 Give **four** challenges facing Nomadic pastoralism in Kenya. (4 marks)
- 5 Use the map of Kenya below to answer question (a).



- (a) Name the hydro-electric power projects marked E, F and G. (3 marks)
- (b) State **three** advantages of geothermal power as a source of energy. (3 marks)

SECTION B: (75 marks)

Answer question 6 and any other two questions in this section.

- 6 The table below shows the value of some of Kenya's mineral exports from 2008 to 2011. Use it to answer questions (a) and (b).

Value of Kenya's mineral exports (Million Ksh.)

Mineral \ Year	2008	2009	2010	2011
Soda Ash	13 200	8 300	7 300	12 400
Petroleum Products	4 200	4 500	4 700	6 100
Cement	7 300	7 800	7 400	8 900

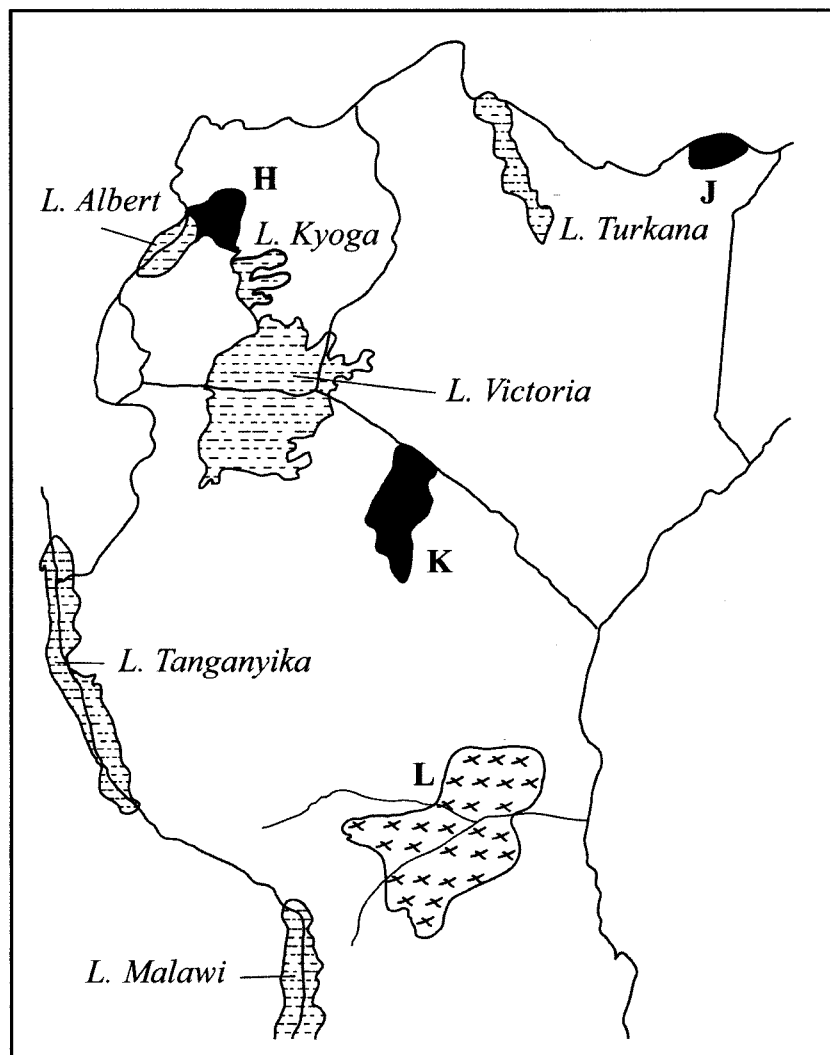
Source: Central Bureau of Statistics

- (a) (i) Using a scale of 1 cm to represent 1 000 million Kenya Shillings, draw a comparative bar graph to represent the data shown. (8 marks)
- (ii) State **three** advantages of using comparative bar graphs to represent statistical data. (3 marks)
- (b) Calculate the percentage increase in value of exports between the years 2010 and 2011. (6 marks)
- (c) Explain the significance of trade to the economy of Kenya. (8 marks)
- 7 (a) State **three** physical conditions which favour large scale sugarcane growing in Kenya. (3 marks)
- (b) (i) Describe the stages involved in the processing of sugarcane at the factory. (6 marks)
- (ii) Give **three** by-products obtained from sugarcane. (3 marks)
- (c) Explain **three** ways in which the Kenya Government is promoting the sugar manufacturing industry. (6 marks)
- (d) Your class visited a sugarcane plantation for a field study on land preparation and planting.
- (i) Outline **four** activities that you are likely to identify. (4 marks)
- (ii) Give **three** methods you would use to record data during the field study. (3 marks)

8 (a) Differentiate between domestic and international tourism.

(2 marks)

Use the map of East Africa below to answer question (b).



(b) Name:

(i) The national parks marked **H**, **J** and **K**.

(3 marks)

(ii) The game reserve marked **L**.

(1 mark)

(c) (i) Explain how the following factors influence tourism in Kenya.

- climate;
- scenery;
- tour companies.

(2 marks)

(2 marks)

(2 marks)

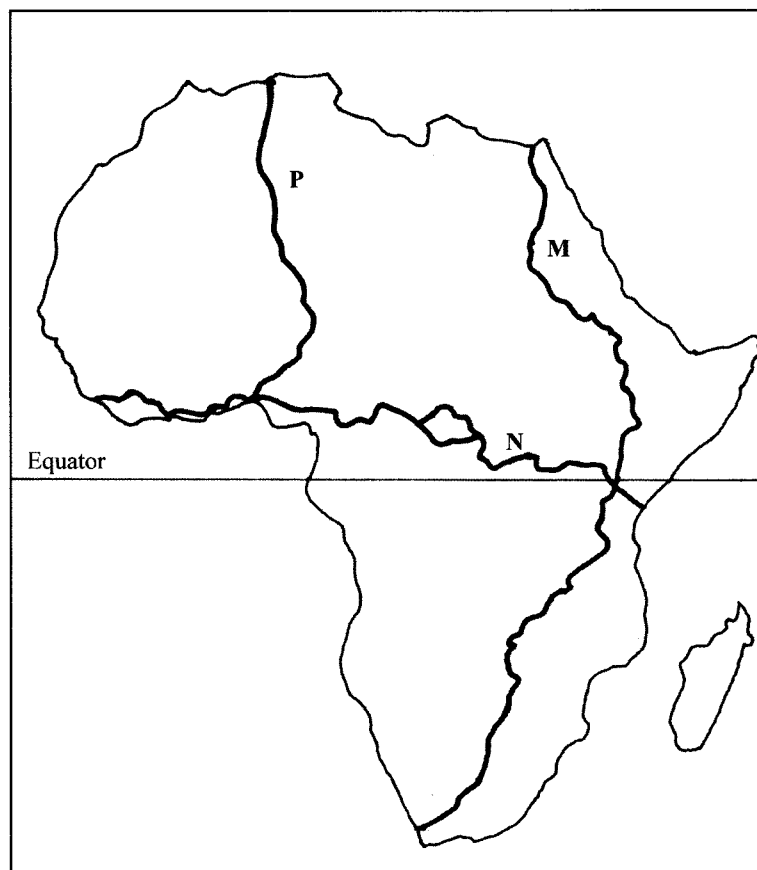
(ii) State **five** effects of floods on tourism.

(5 marks)

(d) Explain **four** ways in which the county governments in Kenya would promote sustainable tourism.

(8 marks)

9 Use the map of Africa below to answer question (a)



- (a) Name the trans-continental highways in Africa marked **M**, **N** and **P**. (3 marks)
- (b) (i) State **four** advantages of air transport. (4 marks)
- (ii) Explain **four** efforts that the Kenya Government has taken to improve air transport. (8 marks)
- (c) (i) Identify **two** types of communication. (2 marks)
- (ii) Explain **four** problems facing communication in Africa. (8 marks)
- 10 (a) (i) Give **two** main sources of population data. (2 marks)
- (ii) Outline the information that can be derived from a population pyramid. (3 marks)
- (b) Explain how the following factors have led to population increase in Kenya
- (i) cultural beliefs; (2 marks)
- (ii) migration. (2 marks)
- (c) Explain **four** problems which result from a high population growth rate in Kenya. (8 marks)
- (d) Describe **four** ways in which the population of Kenya differs from that of Sweden. (8 marks)