

Name ..... Adm. No. ....

443/2  
AGRICULTURE  
Paper 2  
Oct/Nov. 2015  
Time: 2 Hours

Candidate's Signature .....

Date .....

## KANDARA SUB-COUNTY FORM 3 JOINT EVALUATION Kenya Certificate of Secondary Education

AGRICULTURE  
Paper 2  
Oct/Nov. 2015  
Time: 2 Hours

### INSTRUCTIONS TO CANDIDATES

- \* Write your name, admission number, class and date in the spaces provided.
- \* This paper consists of **three** sections A, B and C
- \* Answer **all** the questions in section A and B and any **two** questions from section C.
- \* Section A and B should be answered on the spaces provided while section C should be answered on the space left after question 27.

### For Examiner's Use Only

Section	Questions	Maximum score	Candidate's score
A	1 - 19	30	
B	20 - 24	20	
C	25	20	
	26	20	
	27	20	
<b>Total score</b>		<b>90</b>	

**SECTION A : (30 MARKS)**

**Answer all questions in this section in the spaces provided.**

1. List **two** appropriate hand tools needed to finish off the handle of a fork jembe. (1 mark)

.....  
.....

2. Give **two** predisposing factors of foot rot in sheep. (1 mark)

.....  
.....

3. Name a breed of sheep with a lambing percentage of above 125 and whose fleece may be inferior due to black fibres. (1 mark)

.....

4. State **two** functions of drones in a colony of bees. (1 mark)

.....  
.....

5. Give **four** construction features necessary in a fish pond. (2 marks)

.....  
.....  
.....  
.....

6. Mention **four** ways in which disease causing organisms can gain entry into a newly born calf. (2 marks)

.....  
.....  
.....  
.....

7. State **three** ways of controlling fleas in poultry. (1½ marks)

.....  
.....  
.....

8. Give **four** reasons why camels are suited to living in arid areas. (2 marks)

.....  
.....  
.....  
.....

9. Give **two** functions of the crop in the digestive system of chicken. (1 mark)

.....  
.....

10. State **four** methods of dehorning. (2 marks)

.....  
.....  
.....  
.....

11. State **four** structural features of a good pig house. (2 marks)

.....  
.....  
.....  
.....

12. Mention **four** factors that should be considered when siting cattle dip. (2 marks)

.....  
.....  
.....  
.....

13. Differentiate between ringing and crutching as used in livestock management. (1 mark)

.....  
.....  
.....  
.....

14. Give **two** functions of ovaries in dairy cattle.

(1 mark)

.....  
.....

15. State **three** signs of heat in a rabbit.

(1½ marks)

.....  
.....  
.....

16. Give the meaning of the following terms used in livestock health

(4 marks)

i) Vector

.....  
.....

ii) Incubation period

.....  
.....

iii) Carrier

.....  
.....

iv) Mortality

.....  
.....

17. Name the mineral whose deficiency in the body of an animal would bring the following conditions.

(2 marks)

i) Milk fever .....

ii) Pica .....

iii) Paraketosis .....

iv) Head retraction in chicks .....

18. Give **four** advantages of embryo transplant.

(2 marks)

.....  
.....  
.....  
.....

19. Mention **two** ways that can be used give an animal a vaccine.

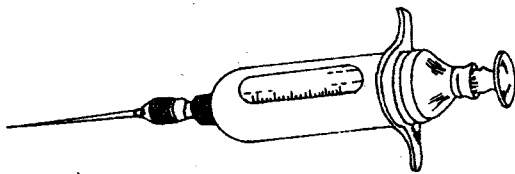
(1 mark)

.....  
.....

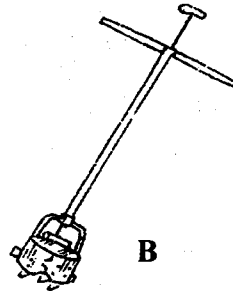
**SECTION B : (20 MARKS)**

**Answer all the questions in this section in the spaces provided.**

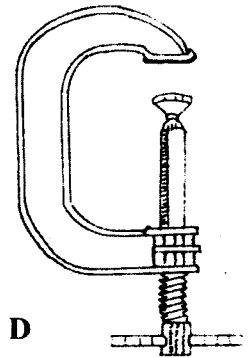
20. Below are illustrations of farm tools and equipment. Study the illustrations and answer the questions that follow.



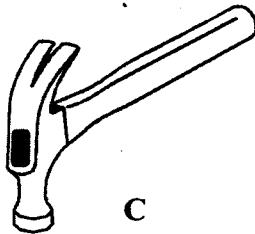
A



B



D



C

a) Identify the tools and equipment labelled A and B.

(1 mark)

A .....

B .....

b) State one appropriate use of the tool labelled C.

(1 mark)

.....

c) Explain two maintenance practices for the tool labelled D.

(2 marks)

.....

.....

21. A farmer is required to prepare a 200kg of a calf rearing ration 20% DCP. Using Pearson's square method, calculate the amount of maize containing 10% DCP and sunflower containing 35% DCP the farmer would need to prepare the ration. (show your work) (4 marks)

.....

.....

.....

.....

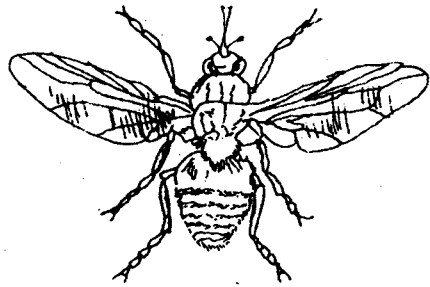
.....

.....

.....

.....

22. The diagram below illustrates a livestock parasite.



a) Identify the parasite illustrated above. (1 mark)

.....

b) State the major harmful effect of the parasite. (1 mark)

.....

c) Explain two control measures for the parasite above. (2 marks)

.....

.....

.....

.....

23. Describe the procedure that should be used to shear sheep wool. (4 marks)

.....

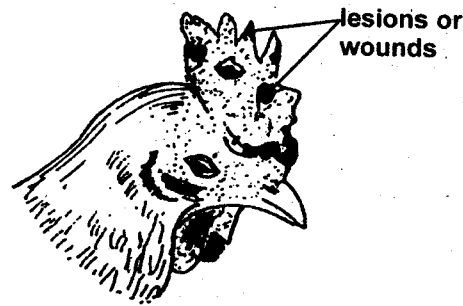
.....

.....

.....

.....

24. The following diagram illustrates a symptom of a disease in poultry. Study it carefully and answer the questions that follow.



a) Identify :

i) the disease ..... (½ mark)

ii) the causal organism ..... (½ mark)

b) Apart from lesions, state **one** other symptom of the disease. (1 mark)

c) State **two** control measures for the disease. (2 marks)

**SECTION C : (40 MARKS)**

Answer any two questions in this section in the spaces provided at the end of the section.

25. a) Describe the procedure followed when constructing a barbed wire fence. (8 marks)

b) Describe **five** signs of ill health in livestock. (5 marks)

c) Describe digestion in the rumen of ruminant animals. (7 marks)

26. a) Outline **eight** characteristics a farmer should consider when selecting a dairy heifer for breeding. (8 marks)

b) Give **five** reasons for keeping livestock healthy. (5 marks)

c) Describe the symptoms of roundworms infestation in livestock. (7 marks)

27. a) Explain **seven** way in which ticks can be controlled on a livestock farm. (7 marks)

b) Describe **eight** physical characteristics a poultry farmer would use to identify poor layers from a flock of hens. (8 marks)

c) Describe the management practices that would ensure maximum yield of fish in a fish pond. (5 marks)

A series of horizontal dotted lines for writing.



Lined writing area consisting of 25 horizontal dotted lines.

Blank lined paper with horizontal dotted lines for writing.