

30 copies

GATTU SECONDARY SCHOOL, P.O. BOX 327 – 01030, GATUNDU.

FORM 4 AGRICULTURE PAPER 2 END OF TERM I EXAMINATION. 2015

NAME: _____ CLASS _____ ADM _____

Answer all questions in the spaces provided. Section 'A' 30 mks

1. Give two reasons for weighing piglets in pig management. (2mks)

- i)
- ii)

2. State two factors considered in preparation of livestock rations (2mks)

- i)
- ii)

3. State three factors that influence quality of concrete, (3mks)

- i)
- ii)
- iii)

4a) List two tools/equipments used in handling bees. (2mks)

- i)
- ii)

b) State two circumstances under which bees are handled. (2mks)

- i)
- ii)

5. State the appropriate use of each of the following tools. (3mks)

- i) Oil-can
- ii) Mortise gauge
- iii) Dip stick

6. Differentiate between isolation and quarantine in disease control. (2mks)

7. Give two methods of igniting fuel in an engine. (2mks)

10

ii)

8. Name two exotic breeds of pigs. (2mks)

i)

ii)

9. Give two roles of litter in a poultry house. (2mks)

i)

ii)

10. Name two marketing channels of beef. (2mks)

i)

ii)

11. State four signs of heat in a ~~girl~~ *gilt*. (4mks)

i)

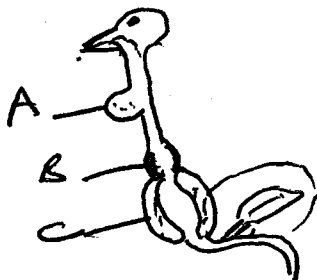
ii)

iii)

iv)

SECTION 'B' 20 MARKS

12. The diagram below shows part of the poultry's digestive system.



a) Name parts A B and C

(3mks)

b) A

c) B

d) C

e)

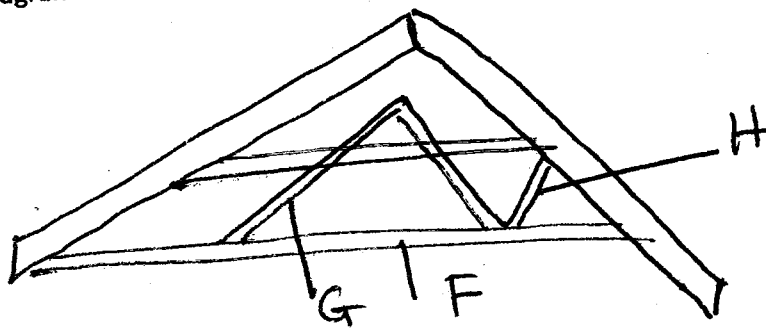
B) State function of part A and C

(2mk)

A

C

13. The diagram below shows part of a roof structure



a) Identify the structure

(1mk)

b) Name parts of F G and H

(3mks)

F

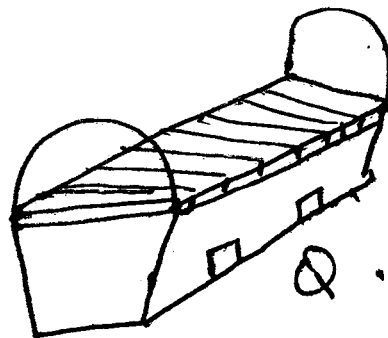
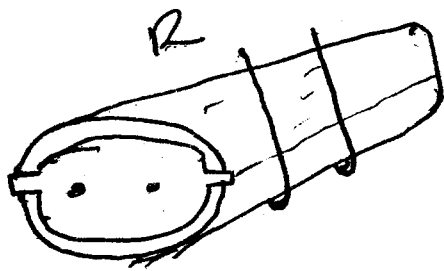
G

H

c) On the diagram above, draw a purlin in position

(1mk)

14. Below are two different types of hives. Study them and answer the questions that follow



a) Identify hives R and Q (2mks)

R

Q

b) State two disadvantages of hive R (2mks)

i)

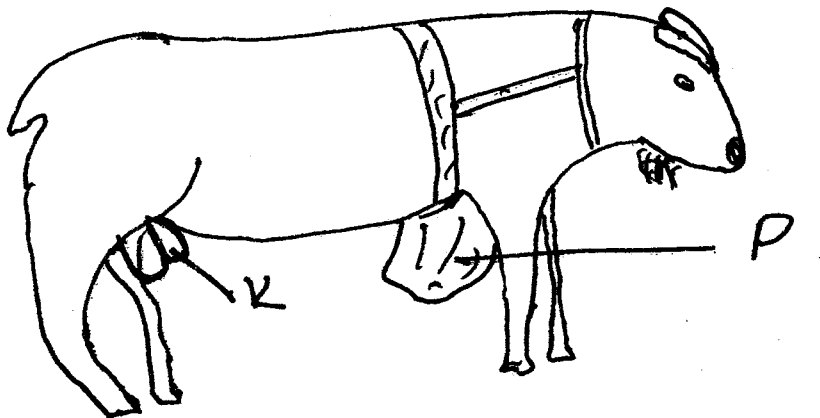
ii)

c) Name two tools used to constrict hive Q (2mks)

i)

ii)

15. The diagram below shows a buck. Use it to answer the questions that follow:



a) Identify structure P (1mk)

b) State the role of structure P (1mk)

C) Identify a rearing practice carried out on park K.

(1mks

d) Name one tool used to carry out the practice in © above.

(1mk

SECTION C (40 MKS)

16(A) In what ways is the diesel engine different from petrol engine.

(10mks

b) Describe the procedure followed when spraying a cow with ^{acaricide} ~~acaricide~~ using a bucket sprayer.

(10mks