

GATITU SECONDARY SCHOOL, P.O. BOX 327 – 01030, GATUNDU.

FORM 4 AGRICULTURE MID TERM EXAMINATION. TERM I 2016.

1. Give four measures that can control egg eating by hens in a deep litter system. (4mks

- i)
- ii)
- iii)
- iv)

2. State four observations on the behaviour of chicks which would indicate that the temperature of the brooder is too high. (4mks

- i)
- ii)
- iii)
- iv)

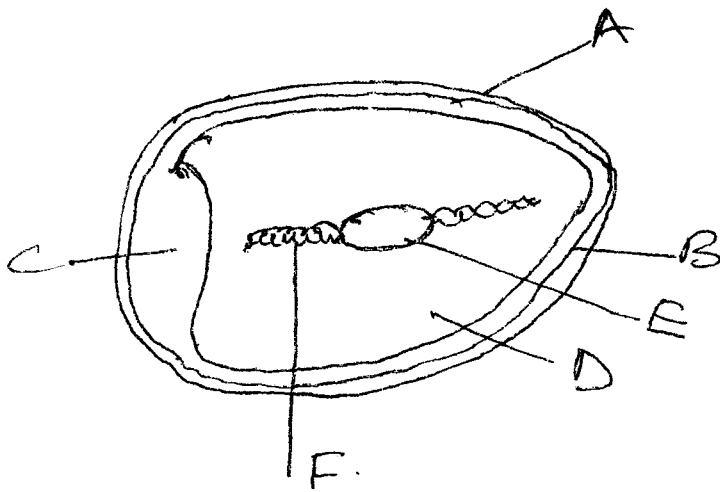
3. List six qualities of eggs suitable for incubation.)6mks

- i)
- ii)
- iii)
- iv)
- v)
- vi)

4. Describe the steps to be taken in maintaining hygiene in a deep litter poultry house. (5mks

- i)
- ii)
- iii)
- iv)
- v)

5. The diagram below illustrates an egg. Study it and answer the questions that follow.



- a) Name parts labeled B C D and F. (4mks)
- i)
 - ii)
 - iii)
 - iv)
- b) State two qualities of the part labeled A that should be considered when selecting eggs for incubations. (2mks)
- i)
 - ii)
- c) What is the function of the part labeled E in a fertilized egg? (1mk)
6. Give three reasons for candling eggs in poultry production. (3mks)
- i)
 - ii)
 - iii)

7. Why are the following conditions maintained during artificial incubation of eggs in poultry production?

a) Proper ventilation (1mk)

b) Relative humidity at 60% 1mk

8. State three advantages of fold system in poultry rearing. (3mks)

i)

ii)

iii)

9. State one method of increasing ploughing depth when using a disc plough. (1mk)

10. State three reasons for maintain farm implements. (3mks)

i)

ii)

iii)

11. State two functions of a Disc coulter in a mould board plough. (2mks)

i)

ii)

12. List four implements used to carry out primary cultivation. (4mks)

i)

ii)

iii)

iv)

13. State four functions of the lubrications system of a tractor. (4mk)

i)

ii)

iii)

iv)

14. State four reasons why a farmer would use a disc plough rather than a mouldboard plough. (4mks)

i)

ii)

iii)

iv)

15. Give four maintainance practices carried out on the water cooling system of a tractor. (4mks)

i)

ii)

iii)

iv)

16. Outline four daily maintance practices that should be carried out on a farm tractor. (4mks)

i)

ii)

iii)

iv)

17. State three adjustments that should be carried out on a tractor mounted mouldboard plough in preparation for ploughing. (3mks)

