

NAME.....ADM NO.....

CLASS

WANGU WARD JOINT EXAMINATION

44/2 AGRICULTURE PAPER 2

TIME 2HRS

INSTRUCTIONS

- This paper consists of three sections, A,B and C
- Answer all questions in section A and B in the spaces provided and any two questions from section C.

SECTION A (30 MARKS)

Answer all questions in this section.

1. Outline two possible causes of low libido in bucks. (1mk)

2. Give the functions of reticulum in food digestion in cattle. (1mk)

3. State three properties of concrete that make it more suitable in the construction of farm structures. (1½mks)

4. State four factors that would contribute to the depreciation of a farm equipment. (2mks)

5. Identify the following breeds of livestock (2mks)
 - i) A pig breed with dished face, erect ears and white in colour.

 - ii) A beef breed cream white in colour usually very heavy its males weighing up to 1200kg

 - iii) A white breed of goat usually with long hair

 - iv) A wool sheep with long curl wool usually covering its face.

6. List four routes through which pathogens can enter the body of a newly-born calf. (2mks)

7. Name the hormone that is concerned with milk synthesis. (1/2mk)

8. State four symptoms of anthrax infection in the carcass of a cow. (2mks)

9.State three characteristics of colostrum that make it suitable for new born livestock. (1 1/2 mks)

10.A bull gained 100kg of live weight after eating 400kg of beef concentrates over a period of time.
Calculate its feed conversion ratio. (FCR) (2mks)

11. Give two reasons for raddling in sheep management. (1mk)

12. Name the intermediate host of liver fluke. (1mk)

13. Give the meaning of the following terms as used in livestock breeding.

a) Recessive gene.

(1mk)

b) epistasis.

(1mk)

14. State four signs that indicate that a doe is about to kindle.

(2mks)

15. State four signs of mite attack in poultry.

(2mks)

16. State three signs of broodiness in a hen.

(1¹/₂mks)

17. State four advantages of fish farming in Kenya.

(2mks)

18. Name four methods of docking in sheep rearing.

(2mks)

19. State two causes of soft shelled eggs.

(1mk)

SECTION B

Answer all the questions in this section in the spaces provided.

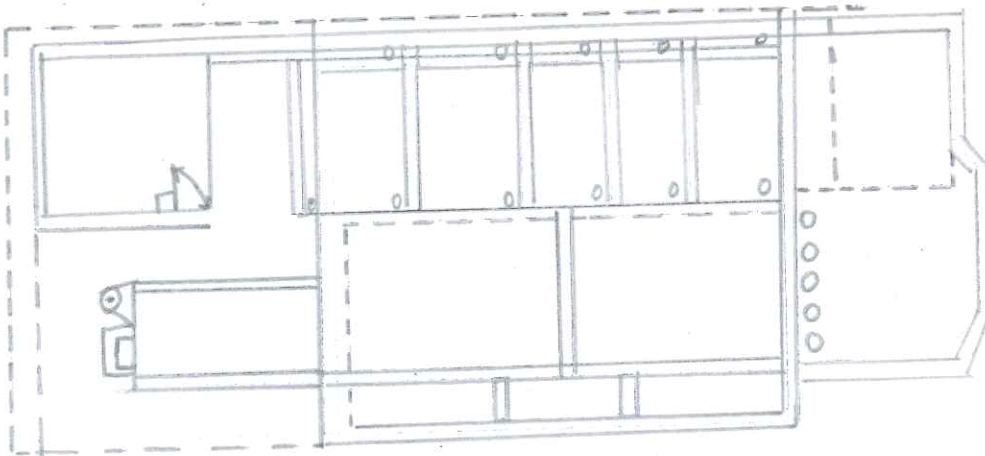
20. The diagram below illustrates a livestock deficiency disease. Study the diagram and answer the questions that follow



- a) Identify the disease. (1mk)
- b) Identify the deficient nutrient. (1mk)
- c) Apart from the head retraction, state two other symptoms of the deficiency disease in (a) above. (2mks)

d) State one role of the nutrient named in (b) above. (1mk)

21. The ground plan of the zero grazing unit shown in the diagram below and answer the questions that follow.



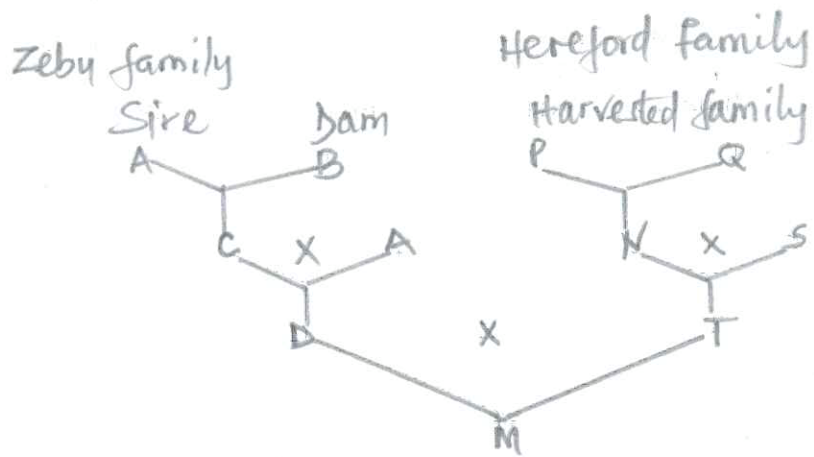
a) Indicate the location of the following parts of zero grazing unit using roman numbers on the diagram.

- I. Store
- II. Calf pen
- III. Walking area
- IV. Food and water trough area. (2mks)

b) What type of a calf pen is in the zero grazing. (1mk)

c) State two structural requirements of a calf pen. (2mks)

22. The illustration below shows different livestock families. Use it to answer questions that follow.



a) Identify the breeding system between

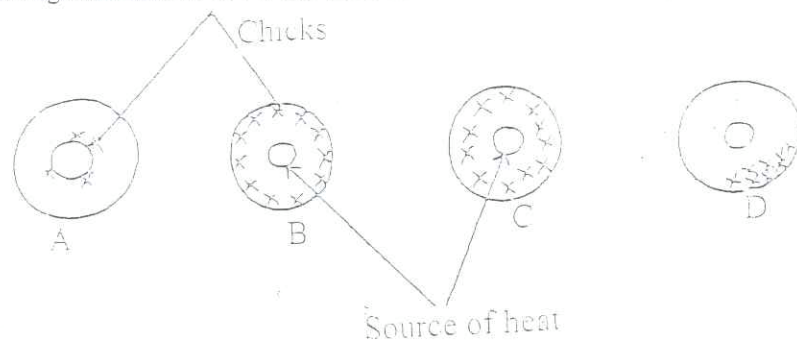
i) C and A (1mk)

ii) D and T (1mk)

b) State two advantages of the breeding system identified in a (ii) above. (2mks)

c) Why is the breeding system identified in a (i) not recommended in dairy cattle. (1mk)

23. The following illustrations show the behavior of chicks at different temperatures in a brooder.



a) Explain the temperature conditions in each of the four diagrams A, B, C and D (2mks)

A.....

B.....

C.....

D.....

b)State any four requirements of a good brooder. (2mks)

c)What is the importance of putting a wire gauze around the heat source. (1mk)

SECTION C (40MARKS)

Answer any two questions in the spaces provided.

24.a)Describe hand milking of a dairy cow. (10mks)

b)Explain the practices observed in clean milk production. (8mks)

c)Name two milk equipments (2mks)

25a)Describe how a four stroke cycle engine operates. (12mks)

b)Describe the daily maintenance of a tractor. (8mks)

26.a)Describe the general safety precautions a farmer should observe when using and handling farm tools. (6mks)

b) Outline the various causes of swarming in bees. (8mks)

c) Highlight six factors that influence the amount of concentrate given to a lactating animal. (6mks)