

FOCUS A365

Another Manyamfranchise.Com Evaluation Test

GATITU SECONDARY SCHOOL

AMBUSH 2 EXAMS MATHS | 2017 | FORM 2 | TERM 1 (32 MARKS)

INSTRUCTIONS

Answer all questions provided below

1. On squared or graph paper, plot the following points, taking one square to represent a unit on both axes. A (-1.5,-0.5), B (0.5,-2.5) and C (4, 1.5)
Given that ABCD is a parallelogram, find the possible coordinates of D. (5 mks)
2. Solve graphically the following pairs of simultaneous equations: (5 mks)
 $y + 2x = 6$
 $x - y = 3$

3. Find angles marked by letters in the figures below:

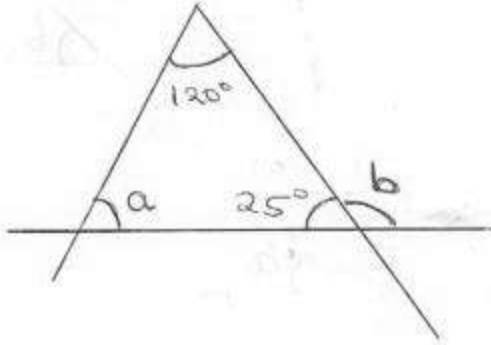


Figure 1 find $\angle a$ and $\angle b$ (2 mks)

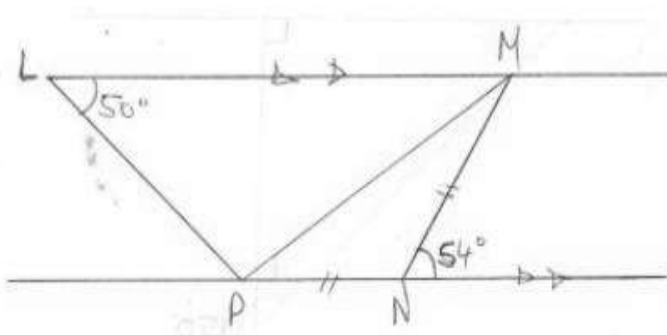


Figure 2 find $\angle LPM$ (2 mks)

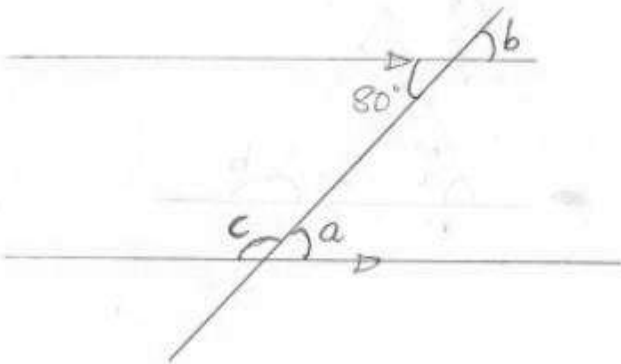


Figure 3 find $\angle a$, $\angle b$ and $\angle c$ (3 mks)

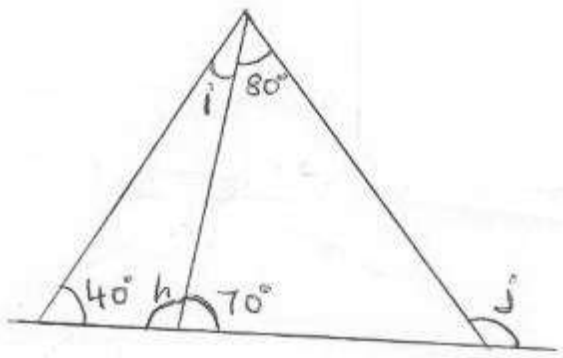


Figure 4: find $\angle i$, $\angle j$ and $\angle h$ (3 mks)

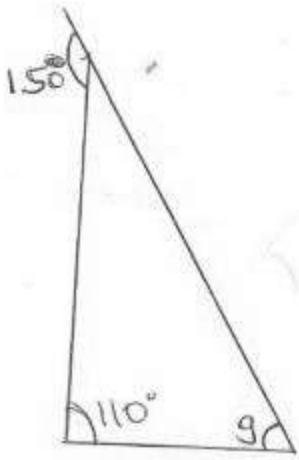


Figure 5: find $\angle g$ (2 mks)

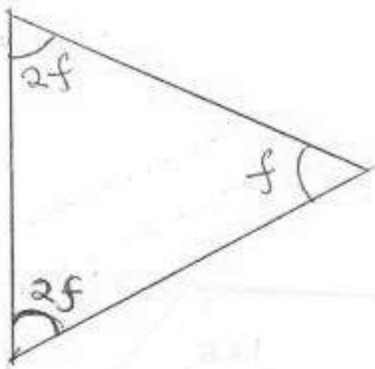


Figure 6: find f (2 mks)

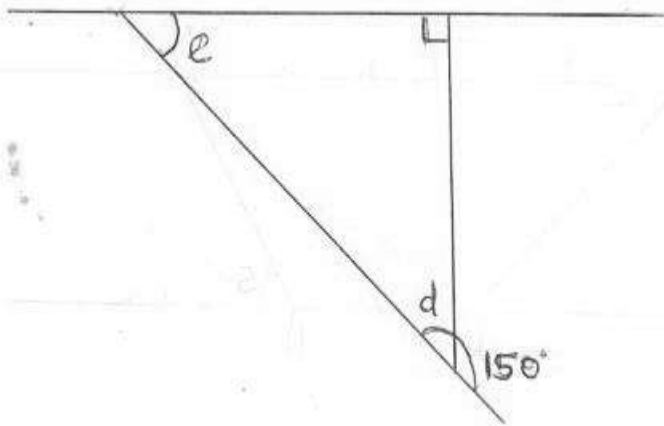


Figure 7: find $\angle e$ and $\angle d$ (2 mks)

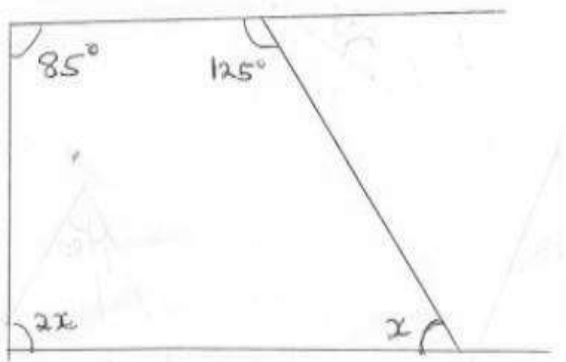


Figure 8: find x (2 mks)

4. By the use of a drawing, discuss each of the following angles: (4 mks)
- a. Obtuse angle
 - b. Reflex angle
 - c. Co-Interior angle
 - d. Acute angle