

## 15.0 ART AND DESIGN (442)



The year 2009 KCSE Art and Design examination tested the application of knowledge, skills, concepts and attitudes fundamental to Art and Design activities. The subject was tested in three papers:

- Paper 1 (442/1) - Theory
- Paper 2 (442/2) - Practical
- Paper 3 (442/3) - Project

### 15.1 GENERAL CANDIDATES' PERFORMANCE

The table below shows overall candidates' performance in Art and Design (442) examination in the years 2006, 2007, 2008 and 2009.

*Table 20: Candidates' Overall Performance in Art and Design (442) for the last Four years*

Year	Paper	Candidature	Maximum Score	Mean Score	Standard Deviation
2006	1	1,120	50	29.86	7.26
	2		100	59.62	14.41
	3		50	34.17	5.05
	Overall		200	123.52	21.00
2007	1	999	50	25.67	8.82
	2		100	62.04	14.58
	3		50	29.72	6.68
	Overall		200	117.24	23.00
2008	1	1,072	60	35.92	7.67
	2		100	62.15	13.52
	3		40	33.27	5.15
	Overall		200	132.35	19.71
2009	1	1,076	60	34.21	9.12
	2		100	60.34	15.97
	3		40	22.85	5.03
	Overall		200	116.84	25.71

The following observations can be made from the table above:-

15.1.1 There is a slight increase in candidature from 1,072 in the year 2008 to 1,076 candidates in the year 2009, an increase of 4 candidates.

15.1.2 There is a drop in performance of candidates in Paper 3 (Project) in year 2009 as compared to year 2008 as evidenced by the mean scores of 22.85 and 33.27 respectively.

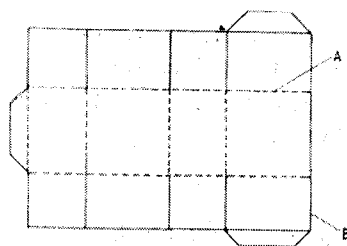
15.1.3 Overall performance was better in year 2008 as compared to years 2006, 2007 and 2009 as shown by the mean scores of 123.52, 117.24, 132.35 and 116.84 respectively.

The discussion below is based on a sample of randomly selected candidates' scripts for the year 2009 KCSE Art and Design examination. Analysis of performance for each question was carried out to determine the questions that were poorly done. We shall therefore, discuss the questions in which the candidates performed poorly.

### 15.2 PAPER 1 (442/1)

#### Question 1 (a)

The illustration below represents a design of a carrier bag in the process of construction.



Name the lines marked A and B and state their functions.

The question was based on packaging design. The candidates were required to study the plan of a carrier bag illustrated above and name the lines A and B as shown by the arrows. It was testing candidates' knowledge on types of lines and their function in Art and Design.

#### Weaknesses

Surprisingly, many candidates were unable to identify and state the functions of lines A and B.

#### Expected Response

Line A is a fold line/broken line or dashed line and marks the lines on which the folding will be done. Line B marks the outer areas, contour or border line.

#### Question 1(b)

Stating the main reason for each, explain why contrast and harmony are important in a stencil design.

The question was examining the candidates' knowledge on the principles of Art and Design. The candidates were required to state the reasons and explain why contrast and harmony are important in a stencil design.

#### Weaknesses

A few of the candidates performed well in this item but majority gave reasons which were not related to stencil design. Some did not answer the question leaving blank space.

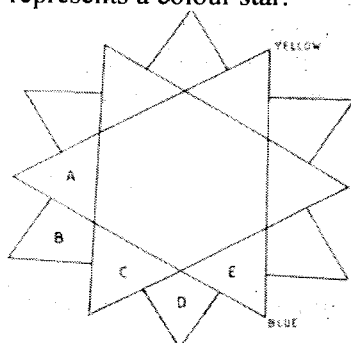
#### Expected Response

Contrast can mean any obvious distinction for example, dark against light, big against small, textured against smooth and so on. Therefore, contrast gives emphasis, depth and attention of forms in a stencil design. It separates the negative from positive space.

Harmony gives continuity and progression, creates a unit, orderly and pleasant arrangement due to use of closely related elements.

#### Question 1(c)

The illustration below represents a colour star.



- (i) Name the colours labeled **B** and **D**
- (ii) Classify the group of colours represented by **A,B,C,D** and **E**.

The question was based on colour which is an important element of Art and Design. It examined candidates' knowledge on colour theory and particularly, the colour star. They were required to study the colour star illustrated above and name the colours labeled B and D. They were also required to classify the group of colours A,B,C,D and E as shown on the colour star.

#### Weaknesses

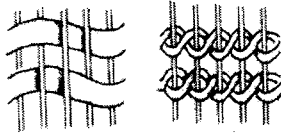
Majority of the candidates were able to name the colours labeled A and B. However, most of them failed to classify the group of colours represented by A,B,C,D and E as required by the question hence performing poorly.

#### Expected Response

The colours labeled B and D are red purple and blue purple respectively. The colours represented by A,B,C,D and E are classified as analogous or harmonious colours. Analogous harmonies combine colours adjacent to one another on the colour wheel or star such as red, red purple, purple, blue purple and blue as represented by letters A,B,C,D and E.

#### Question 1(f)

The following illustrations show weaving techniques.



- (i) Identify the two techniques.
- (ii) Distinguish between the two techniques.

This question was based on the weaving technique and required the candidates to identify and distinguish between the two weaving techniques illustrated above.

#### Weaknesses

Most of the candidates were unable to differentiate the two weaving techniques. For the first illustration, some candidates failed to study the movement of the weft under and over the warps and hence gave plain weave as the answer, which was wrong. Responses given by some candidates such as interlocking, cross-over weave, full drop were wrong. However, a considerable number of the candidates were able to identify the twine weave.

#### Expected Responses

The first illustration shows a twill weave (2/2) and the second one shows a twining weave. The (2/2) twill weave shown involves passing the weft threads under two, over two in succession across the width of the cloth. Twill weave structures create diagonal lines of pattern in the cloth. On the other hand, a twine weave entails chaining, where two weft threads cross every time they entwine a warp thread. The twining weave is commonly used to produce rugs and the kiondo baskets.

#### Question 1(i)

Distinguish between inverse and bas relief sculptures.

The question was examining candidates' knowledge on the types of sculpture. The item required the candidates to distinguish between inverse and bas relief sculptures.

### Weaknesses

Those few candidates who were familiar with the types of sculptures scored extremely well in this question. However, majority of candidates could not express themselves clearly as they lacked the appropriate language to differentiate the two types of sculptures.

### Expected Responses

In sculpture there are two main types of relief namely; projected relief and sunken/intaglio relief. These sculptures can only be viewed from one side only. They have three dimensional depth, but they do not occupy space as independently as sculptures in the round. Inverse/intaglio relief has forms and figures sunken into the surface or background. Low relief which is sometimes called by the French name bas relief, has forms and figures standing out slightly from the surface or background for example, ten cent coin.

### Question 2

Use a biro or pen and ink on the figure below to create a silhouette.



The question was an application item which required candidates to use a biro or pen and ink to create a silhouette on the figure illustrated.

### Weaknesses

Most of the candidates were not quite familiar with term "Silhouette". Majority of the candidates misinterpreted the question therefore, giving irrelevant responses to the question.

For instance, some candidates created cast shadows of the figure, others used the stippling technique on the figure to create 3 dimensional effect while some added other features to create an imaginative composition.

### Expected Response



### Question 5

Study the picture below





Analyse the picture under the following concepts.

- (a) format
- (b) style
- (c) technique
- (d) theme

The question was based on critical analysis based on the work of art shown above. The question required the candidates to analyse the picture in relation to format, style, technique and theme.

#### Weaknesses

A considerable number of candidates failed to identify the format, style and technique. However, most candidates were able to identify the theme of the picture.

#### Expected Response

A vertical/portrait format is used in the picture. The style used is semi-abstract, distorted, semi-realistic or surreal. Technique used to produce the picture is block or screen printing. The theme of the picture is "Taking a stroll", woman with a flowing dress or depicts elegance.

#### Question 9

- (a) State the origin and explain the meaning of sculpture.
- (b) Describe the process of casting a papier mache face mask using clay and strips of paper.

This was an optional essay question in Section C, testing candidates' knowledge on meaning and origin of sculpture. They were also examined on the process of casting a papier mache face mask using clay and strips of paper.

#### Weaknesses

This question was not popular among the candidates and those few who attempted it were generally weak and performed poorly. Majority of the candidates misinterpreted the question and gave vague and irrelevant responses. Some described the process of preparing clay which was wrong.

#### Expected Responses

- (a) Sculpture is derived from the latin word "Sculptura" which means to cut out of stone. The art of carving wood, chiselling stone, casting, welding metal and modelling clay in 3 dimensional representations such as figures, statues and forms are collectively referred to as sculpture.
- (b) "Papier mache" mask using clay and strips of paper.
  - Model or carve a mask from a slab of clay to use as a mould.
  - Rip/Cut paper into small strips.
  - Fill a bowl halfway with water and mix paste with the water until the mixture begins to get sticky.
  - Dip the strips into the paste one at a time and place them over the clay.

- Keep adding one strip over the other, crisis crossing them, pressing each strip down and smoothening to prevent air bubbles being caught under the paper. If the paper gets too wet and murky put on a dry strip now and then. Keep adding strips until the required thickness.
- As the thickness is gained, shape the soggy paper with your fingers, pressing it on the clay form underneath to get the exact shape required.
- When the work attains the required shape and thickness of the mask, place it aside for several days until it is dry (hard).
- Turn the mask upside down and take out the clay. Cut out the eyes, ears nose and mouth. Trim the edges to neaten.
- Decorate it and apply appropriate finish e.g. paint and apply varnish.

### 15.3 PAPER 2 (442/2)

#### 15.3.1 ALTERNATIVE A: DRAWING OR PAINTING

##### Question 1 and 2

You are instructed that the use of rulers and other mechanical devices is *forbidden* in this alternative.

##### ***EITHER***

##### **DRAWING**

1. A small desperate girl in torn clothes going about chores that reflect “Child labour abuse”. Create a composition that portrays a close-up of the girl engaged in the chore. The size of the composition should measure 45cm by 35cm.

##### ***OR***

##### **PAINTING**

2. Create a composition based on the following description:  
 “The leafy trees swayed in harmony with the birds flying against the cloudy sky as the monkeys swung from branch to branch. Behind the trees a stone wall provided a good contrast to the variety of flowers on tat section of the garden.” The size of the composition should measure 45cm by 35cm.

In **question 1**, the candidates were required to make a drawing of a close-up of a small desperate girl in torn clothes going about chores that reflect child labour abuse.

**Question 2**, the optional task in alternative A, required the candidates to paint a landscape scenery depicting leafy trees swaying in harmony with the birds flying against a cloudy sky and monkeys swinging from branch to branch. Show a stone wall behind the trees which were to provide a good contrast to the variety of flowers on that section of the garden.

The questions were testing candidates’ ability to interpret the theme, use of media, application of elements and principles of Art and Design, creativity, organization and presentational skills.

##### **Weaknesses**

According to the candidates work, the drawing of the close up of the desperate small girl going about chores that suggest child labour was not properly attained. A considerable number of the candidates failed to show the impression and features of the desperate small girl in torn clothes.

Many of the candidates had difficulties rendering the correct proportions of the desperate small girl. Poor depiction of drapery and lack of appropriate focal point or dominance were other weaknesses noticed.

The landscape scenery was neither well executed by the candidates. Most of the candidates were unable to show the swaying of trees to indicate the effect of wind, swinging of the monkeys from branch to branch, foliage and variety of flowers on the section of the garden. Some were unable to draw monkeys. There was poor rendering of proportions of the monkeys.

### 15.3.2 ALTERNATIVE B: GRAPHICS

#### Question 3 and 4

You are instructed that the use of rulers and other mechanical devices as well as tracing paper is *allowed*.

The colour of the working surface (paper) will not be considered as one of the colours required in any question.

#### ***EITHER***

3. A client is in need of a unique tailor-made wedding card, programme and a thank you note. Design an illustrated wedding card measuring 30cm by 21cm, programme measuring 11cm by 30cm and a thank you note measuring 11cm by 15cm for the client.

#### ***OR***

4. A youth group in your locality is introducing a new road transport company called "Kool Roadways Transport". The youth group needs to advertise their services.
- (a) Design a logo for the company measuring 14cm by 15cm.
  - (b) Design and produce a brochure incorporating the logo measuring 30cm by 21cm when open.

In question 3, the candidates were required to design a unique tailor-made wedding card, programme and a thank you note for a client in need.

Question 4 required the candidates to design a logo and produce a brochure incorporating the logo.

#### **Weaknesses**

The candidates failed to capture the appropriate design layout and format of the wedding card, programme and thank you note.

Weak lettering, poor illustrations and layout were evident in most of the work presented by the candidates. Their work also showed lack of imagination and creativity and therefore, produced inappropriate wedding cards, programme and thank you note. The candidates should be advised to create their own appropriate type faces and illustrations in order to improve their imagination and creativity. For those candidates who opted to design a logo and brochure incorporating the logo, did not perform better either. The candidates work lacked creativity in designing the logo and incorporating it on the brochure was another challenge. Most candidates misinterpreted the question and failed to design the brochure when open. Poor choice of colours for the logo and brochure, inappropriate letters and forms, little graphic finesse and lack of neatness were other notable weaknesses.

#### **Advice to Teachers**

Teachers are therefore, advised to teach more comprehensively and expose students to graphic design concepts and processes. Organize practical exercises for the students in order to enhance theory learned in graphic design.

Emphasize to the candidates important aspects of executing graphics work such clarity, simplicity and precision in printing. Also emphasize correct interpretation of themes so that they bring out the intended subject matter.

Answer only **ONE** question chosen from **either** alternative A or alternative B.

### ALTERNATIVE A: DRAWING OR PAINTING

You are instructed that the use of rulers and other mechanical devices is **forbidden** in this alternative.

#### EITHER

#### DRAWING

- 1 A small desperate girl in torn clothes going about chores that reflect “Child labour abuse”. Create a composition that portrays a close-up of the girl engaged in the chore. The size of the composition should measure 45cm by 35cm.

#### OR

#### PAINTING

- 2 Create a composition based on the following description:  
“The leafy trees swayed in harmony with the birds flying against the cloudy sky as the monkeys swung from branch to branch. Behind the trees a stone wall provided a good contrast to the variety of flowers on that section of the garden.”  
The size of the composition should measure 45cm by 35cm.

### ALTERNATIVE B: GRAPHICS

You are instructed that the use of rulers and other mechanical devices as well as tracing paper is **allowed**.

The colour of the working surface (paper) will not be considered as one of the colours required in any question.

#### EITHER

- 3 A client is in need of a unique tailor-made wedding card, programme and a thank you note.  
Design an illustrated wedding card measuring 30cm by 21cm, programme measuring 11cm by 30cm and a thank you note measuring 11cm by 15cm for the client.

#### OR

- 4 A youth group in your locality is introducing a new road transport company called “Kool Roadways Transport”. The youth group needs to advertise their services.
- (a) Design a logo for the company measuring 14cm by 15cm.
- (b) Design and produce a brochure incorporating the logo measuring 30cm by 21cm when open.