

NAME.....SCHOOL..... REG. NO.....

SUKELLEMO JOINT EXAMINATION TEST 2019

442/2

ART AND DESIGN

Paper 1

Theory

1 1/2 hours

July 2019

INSTRUCTIONS TO CANDIDATES

Write your name and index number in the spaces provided above

Sign and write the date of the examination in the spaces provided above.

*This question paper consists of three sections **A**, **B** and **C**.*

*Answer all questions in section **A** and **B**.*

*Answer any one question in section **C***

Answers to all the questions must be written in the spaces provided in this booklet.

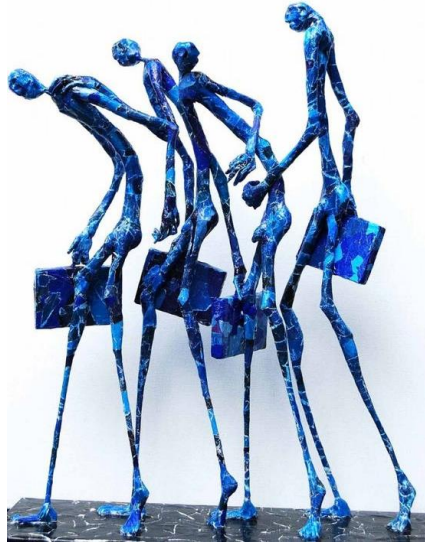
Do not remove any paper from this booklet.

**Candidates should check the question paper to ascertain that
all the pages are printed as indicated and that no questions are missing**

SECTION A (20 MARKS)

Answer all the questions in this section in the spaces provided.

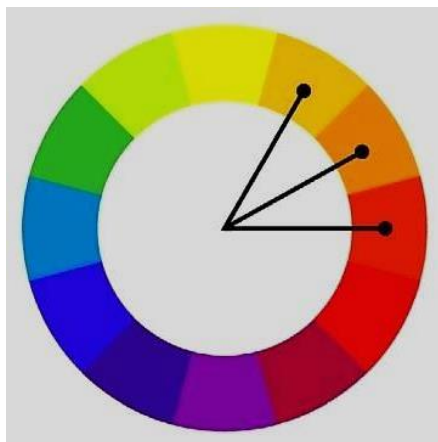
1. (a) State the style use to execute the art work in below (1mark)



.....

.....

- (b) Identify the colour scheme illustrated below. (1mark)



.....

.....

(c) Explain the difference between communication design and environmental design (1mark)

.....
.....

(d) What is the significance of registration in fabric decoration process (1mark)

.....
.....
.....
.....
.....

(e) Below is a three dimensional work of art.



Name the type of artwork (1mark)

.....
.....

(f) Explain the difference between Fresco and Impasto techniques in painting (2marks)

.....
.....
.....

(g) Explain inlaying as technique of ornamentation (1mark)

.....
.....
.....

(h) Explain the difference between an open composition and a closed composition (2marks)

.....
.....
.....

(i) State two uses of 'grog' in pottery (2marks)

.....
.....
.....

(j) The layout below is for a corporate identity component



(k) Name the component and **explain** its importance in a company (2marks)

.....
.....
.....

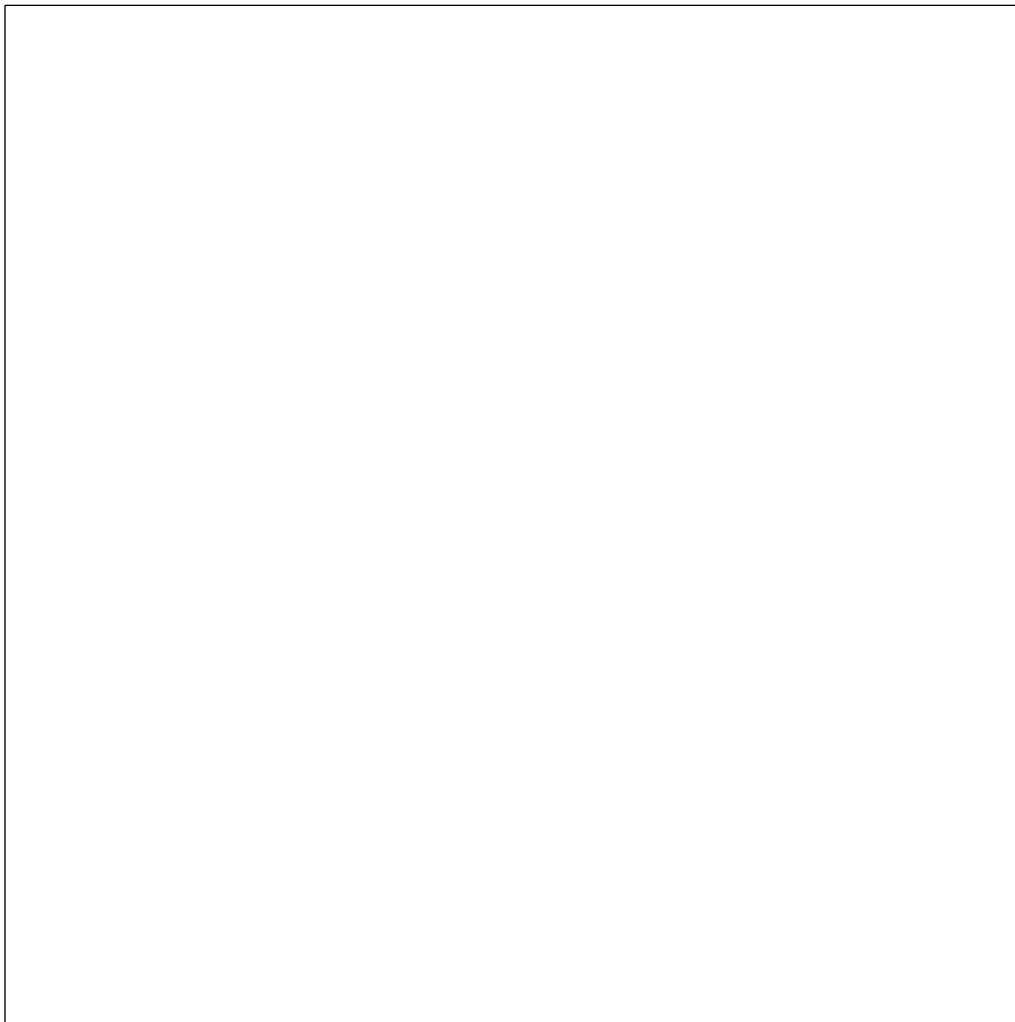
(l) Differentiate between serigraphy and planography. (2marks)

.....
.....
.....

(m) Explain two characteristics that distinguish mosaic artwork (2marks)

.....
.....
.....

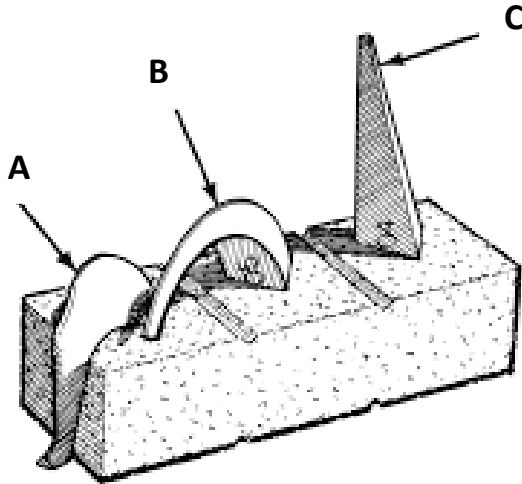
(n) In the space below, illustrate a mug in frog’s eye view (2marks)



SECTION B (25 MARKS)

Answer all questions in this section

2. a) The image below represents equipment used in art.



Name the parts labeled A, B and C

(3marks)

.....

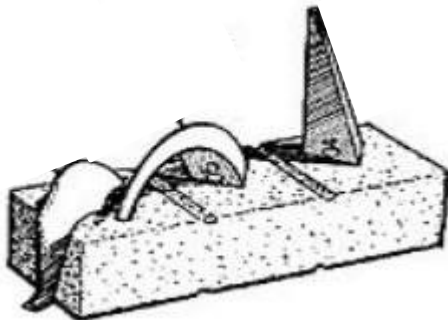
.....

.....

.....

Explain the occurrence in figure X below

(2 marks)



.....

.....

.....

3. Explain the lost wax technique of sculpture making

(5marks)

.....

.....

.....

.....

.....

.....

.....

.....

.....

.....

.....

.....

.....

.....

.....

4. In the space below draw a warped rigid heddle loom that can hold 7 warp threads (5marks)



5. Explain the gathering and binding process of tie and dye

(5marks)

.....

.....

.....

.....

.....

.....

.....

.....

.....

.....

.....

.....

.....

.....

.....

6. Using a box Illustrate the difference between angular and parallel perspective (5marks)



Section C (15marks)

Answer any one question

7. a) Analyze the picture shown under the following areas.



i) Format (1mark)

ii) Content (1mark)

iv) Technique (1mark)

v) Theme (1mark)

c) Explain two key factors to consider when exhibiting artwork (4 marks)

b) Illustrate the process of window mounting an art work measuring 28 cm by 40 cm on a mounting board measuring 32 cm by 45 cm (7marks)

8. Explain the process of making a teapot using the scoop technique of pottery (15 marks)

