

HINDU RELIGIOUS EDUCATION (HRE)

In the year 2011, 200 candidates sat for the Kenya Certificate of Primary Education (KCPE) Hindu Religious Education (HRE). The table below shows the statistics for the paper in the last four years.

Table 26: The National Raw Statistics for the KCPE (HRE) for the last four years

Year	Candidature	Maximum Mark	Mean	Standard Deviation
2008	68	30	14.92	4.62
2009	57	30	16.19	4.16
2010	166	30	10.69	5.26
2011	200	30	18.70	4.96

From the above table, the following observations can be made:

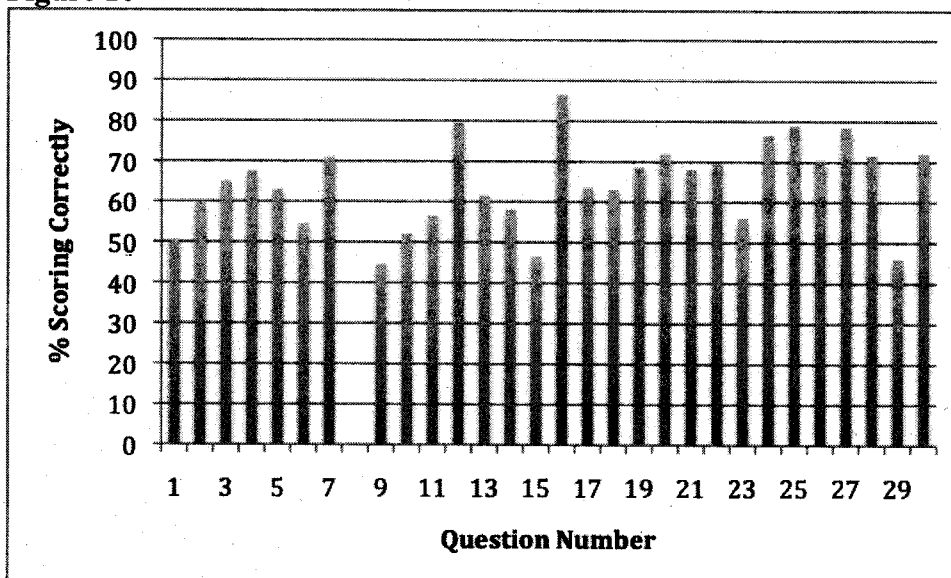
- (i) There was an increase in candidature in 2011 when compared to the year 2010. The candidature increased by 34.
- (ii) There was a marked improvement in the performance of candidates in the year 2011 as attested by the mean of 18.70 when compared to that of 10.69 in the year 2010.

Analysis of the Candidates' Performance

This report is based on a total of 200 candidates who sat the Hindu Religious Education examination in 2011. The candidates had a mean of **18.70** and standard deviation of **4.96**.

The report gives the relative difficulty of each of the **thirty (30)** questions in the figure below. It also discusses an analysis of the candidates' response patterns in the two (2) poorly performed questions.

Figure 10



Analysis of Relatively Poorly Performed Questions

The table below shows candidates' performance in the poorly performed question in the year 2011 KCPE (HRE) examination.

Table 27: Poorly Performed Question in the 2009 KCPE (HRE) Examination

Question Number	69	75
% of candidates choosing correct responses	44.50	46.50

Question 69

The main reason why Hindus follow the ten principles of Lord Manu is to

- A. Unite all human beings
- B. Establish peace in the society
- C. Learn religious knowledge
- D. Regulate human behaviour.

Response Patterns

Option	A	B	C	D*
% choosing the option	17.50	28.50	9.00	44.50
Mean mark in other questions	17.08	19.21	17.94	19.38

The question was on Principle of Dharma. The question required the candidates to give the main reason why Hindus follow the principles of Lord Manu. The correct option D (regulate human behaviour) was picked by 44.50% of the candidates. These were the bright candidates as is attested by their mean of 19.38.

Question 75

Neera and her younger brother Mitesh went to a shop to buy groceries. While at the shop, Neera notices Mitesh putting sweets in his pocket.

The right course of action for Neera to take is to

- A. share the sweets with Mitesh
- B. join Mitesh in stealing the sweets
- C. report Mitesh to their parents
- D. ignore the whole issue.

Response Patterns

Option	A	B	C*	D
% choosing the option	10.50	9.00	46.50	32.50
Mean mark in other questions	15.52	16.44	20.46	18.15

The question was on morals. The candidates were expected to distinguish between right actions and wrong actions. The correct option C (report Mitesh to their parents) was picked by 46.50% of the candidates. These were the bright candidates as is indicated by their mean mark of 20.46 in other questions.

General Comment

There was a marked improvement in the performance of HRE KCPE examination as compared to the other three years under review.

9.0 CONCLUSION

The Kenya National Examinations Council hopes that teachers and all stakeholders will take a keen interest in this backwash report so as to benefit those who are preparing for future KCPE examinations.