

8.2 ISLAMIC RELIGIOUS EDUCATION (IRE)

In the year 2012, 42,673 candidates sat for the Kenya Certificate of Primary Education (KCPE) Islamic Religious Education (IRE) as compared to 39,291 candidates who sat in 2011. The table below shows the statistics for the paper for the last four years.

Table 21: The National Raw Mark for the KCPE (IRE) for the last four years

Year	Candidature	Mean	Standard Deviation	Maximum Mark
2009	29,989	18.25	5.65	30
2010	35,083	19.48	6.17	30
2011	39,291	20.59	5.56	30
2012	42,673	18.01	5.50	30

The following observations can be made from the table above:

- There was an increase in the number of candidates taking Islamic Religious Education at KCPE level in 2012 as compared to year 2011. The candidature increases by 3,382 (7.92%).
- There was a drop in the performance of candidates in the year 2012 as attested by the mean of 18.01 when compared to that of 20.59 in the year 2011.

8.2.1 SYLLABUS COVERAGE AND THE SKILLS TESTED

The areas covered in the syllabus together with the skills tested in the examination are shown in table 22 and 23 below.

Table 22: Areas of Syllabus Coverage in 2012

Areas Tested in the Syllabus	Number of Items
Quran	05
Hadith	02
Devotional Acts	05
Pillars of Iman	04
Muamalat	03
Akhlaq	03
History of Islam	04
Festivals and ceremonies	02
Al- Ilm	02
Total	30

Table 23: Skills Tested in the year 2012

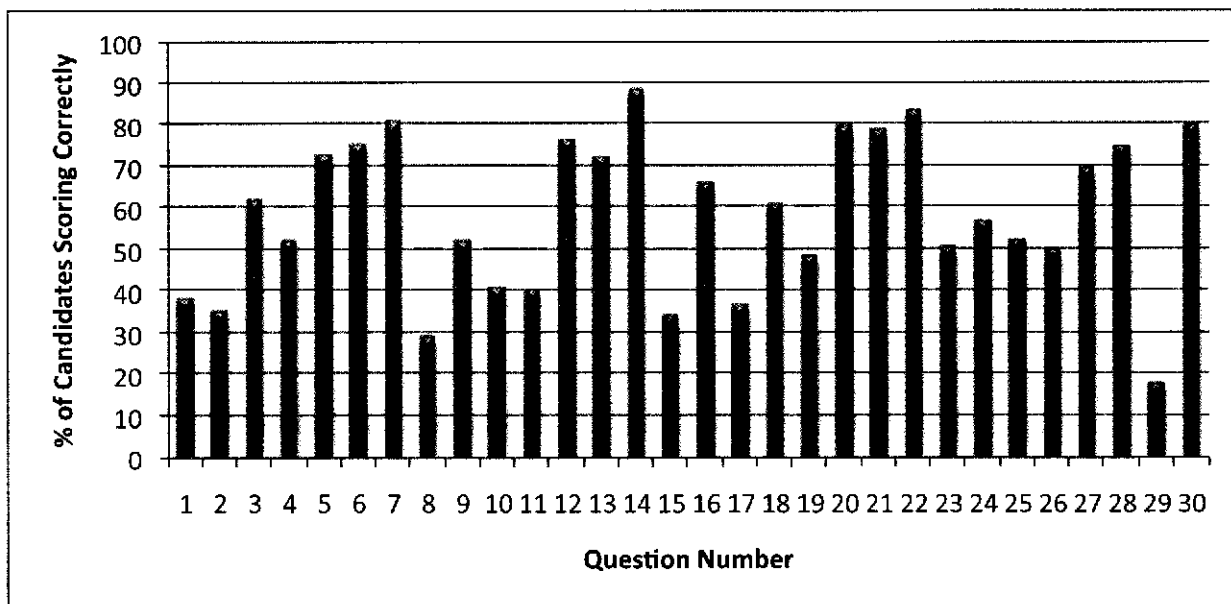
Skills	Number of Items
Knowledge	03
Comprehension	04
Application	08
Analysis	08
Synthesis	04
Evaluation	03
Total	30

8.2.2 ANALYSIS OF THE CANDIDATES' PERFORMANCE

This report is based on a total of 42,673 candidates who sat the Islamic Religious Education examination in 2012. There were 17,115 girls and 25,558 boys. The girls scored a mean of 17.49 and a standard deviation of 5.47, while the boys scored a mean of 18.36 and a standard deviation of 5.49.

The report will give the relative difficulty of each of the thirty (30) items shown in the figure below. It will also discuss analysis of candidates' responses in the two relatively poorly performed questions. Any question where the total number of candidates scoring correctly are 30% or below is considered to be poorly performed.

Figure 9



8.2.3 ANALYSIS OF RELATIVELY POORLY PERFORMED QUESTIONS

The table below shows candidates' performance in the two relatively poorly performed questions in the year 2012 KCPE (IRE) examination.

Table 24: Relatively Poorly Performed Question in the 2012 KCPE (IRE) Examination

Question Number	68	89
% of candidates choosing correct responses	28.98	17.74

Question 68

Which among the following statements is true about the congregational prayer?

- A. It should have a minimum of two people.
- B. It should have a maximum of forty people.
- C. It must be performed in a central mosque.
- D. It is only performed on Friday.

Response Patterns

Option	A*	B	C	D
% choosing the option	28.98	31.13	15.92	20.57
Mean mark in other questions	20.81	18.38	15.59	15.76

This was a comprehension question from the topic of Devotional Acts. The question expected the candidates to be familiar with congregational prayers.

The correct response to this question was option A. The correct option was chosen by **28.98%** of the candidates. These were the brightest candidates as is attested by their mean of **20.81** out of 30 in the other questions. Majority of the candidates went for option B which was wrong; this must have been pure guess work.

Question 89

The main lesson that Muslims learn from the story of Nabi Nuh is

- A. forgiveness
- B. generosity
- C. patience
- D. humility.

Response Patterns

Option	A	B	C	D*
% choosing the option	13.64	20.42	43.33	17.74
Mean mark in other questions	14.09	15.93	19.58	20.15

This was an evaluation question from the topic of Al-Ilm. Candidates were expected to know the story of Nabi Nuh. All the options were lessons but the question asked for the main lesson hence only one of the options could be the correct answer. The correct option was **D**, and was chosen by **17.74%** of the total candidates. These were the brightest candidates as it attested by their mean of **23.37** out of 30 in the rest of the items. The rest of the candidates who chose options A, B and D seem to be confused, they did not understand the task.

8.2.4 GENERAL OBSERVATIONS

- (i) Performance in IRE dropped in the year 2012 as compared to year 2011
- (ii) Candidates seem to be having problems with evaluation questions as seen in the response pattern of poorly performed questions.
- (iii) Teachers need to expose candidates to questions of the above nature.