

Name _____

Index No. _____

1902/104A, 1903/104A, 1906/104A,
1908/104A, 1909/104A, 1916/104A,
1918/104A, 1919/104A, 1922/104A,
1923/104A

Candidate's Signature _____

Date _____

INFORMATION COMMUNICATION
TECHNOLOGY (Theory)
November 2015
Paper 1
Time: 1 hour



THE KENYA NATIONAL EXAMINATIONS COUNCIL

CRAFT CERTIFICATE IN SALES AND MARKETING
CRAFT CERTIFICATE IN SUPPLIES CHAIN MANAGEMENT
CRAFT CERTIFICATE IN BUSINESS MANAGEMENT
CRAFT CERTIFICATE IN HUMAN RESOURCE MANAGEMENT
CRAFT CERTIFICATE IN ROAD TRANSPORT MANAGEMENT
CRAFT CERTIFICATE IN MARITIME TRANSPORT OPERATIONS
CRAFT CERTIFICATE IN TOUR GUIDING AND OPERATIONS
CRAFT CERTIFICATE IN TOUR GUIDING AND TRAVEL OPERATIONS
CRAFT CERTIFICATE IN PROJECT MANAGEMENT
CRAFT CERTIFICATE IN CLERICAL OPERATIONS

MODULE I

INFORMATION COMMUNICATION TECHNOLOGY (Theory)

Paper 1

1 hour

INSTRUCTIONS TO CANDIDATES

Write your **name** and **index number** on the question paper in the spaces provided above.

SIGN and **WRITE** the date of examination in the spaces provided above.

Answer all the questions.

Candidates should answer the questions in English.

For Examiner's Use Only

Question	1	2	3	4	5	6	7	8	9	10	TOTAL SCORE
Candidate's Scores											

This paper consists of 6 printed pages

Candidates should check the question paper to ascertain that all the
pages are printed as indicated and that no questions are missing.

Turn over

1. (a) State **four** categories of microcomputers.

(2 marks)

- (b) Explain the term *editing* as used in word processing.

(2 marks)

2. The management at Thier Tours Ltd. has decided to automate its human resources department in order to improve its image. Explain **two** ICT related innovations that are likely to be introduced.

(4 marks)

<http://college.manyanfranchise.com>

3. With the aid of a block diagram, outline the functional organization of a computer. (4 marks)

4. Peter, a salesperson at a Petroleum company has been advised to procure a spreadsheet program for his work. Explain **two** uses of this program in relation to Peter's work. (4 marks)

5. (a) Outline **two** registers found in the computer CPU. (2 marks)

- (b) A transport company is biased to tailor-made software for its operations. Outline **two** advantages of this software that could have influenced this trend. (2 marks)

6. (a) Explain the term *transaction file* as used in computers. (2 marks)

- (b) Joan has discovered that her computer is infected with viruses. Outline **two** possible sources of the viruses. (2 marks)

7. With the aid of a diagram, describe the client-server computer network. (4 marks)

<http://college.manyamfranchise.com>

8. (a) Distinguish between *slide footer* and *slide sorter* as used in presentation programs. (2 marks)

- (b) Figure 1 shows a network topology used at a tourist company. Explain **one** advantage of the topology. (2 marks)

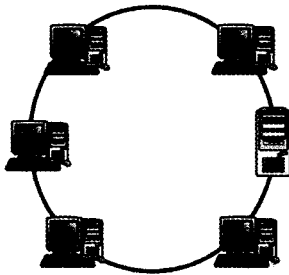


Figure 1

9. (a) Explain the circumstance under which the *telnet service* is applied while using the Internet. (2 marks)

- (b) *Internet installation may be counter-productive in a company.* Explain **one** reason to justify this statement. (2 marks)

10. Describe the procedure that could be used to print handouts with four slides per page in a presentation program. (4 marks)

<http://college.manyamfranchise.com>

THIS IS THE LAST PRINTED PAGE.

**1902/104A, 1903/104A, 1906/104A,
1908/104A, 1909/104A, 1916/104A,
1918/104A, 1919/104A, 1922/104A,
1923/104A**

November 2015