

1704/205
**BUILDING CONSTRUCTION
PRACTICE**
June/July 2016
Time: 18 hours

MANYAM FRANCHISE

P.O BOX 1189 – 40200 Kisii
0728450425 | 0738619279 | 0763450425
sales@manyamfranchise.com
<http://atikaschool.org> | <http://manyamfranchise.com>



THE KENYA NATIONAL EXAMINATIONS COUNCIL

CRAFT CERTIFICATE IN BUILDING TECHNOLOGY MODULE II

BUILDING CONSTRUCTION PRACTICE

18 hours

INSTRUCTIONS TO CANDIDATES

You should have sufficient materials as specified in the advance instructions and specifications to institutions.

This paper is issued to candidates 2 hours in advance of the examination and should be brought to the examination room for use by the candidates.

During this period, candidates should:

- (i) *study the drawings;*
- (ii) *read the instructions;*
- (iii) *select materials and tools;*
- (iv) *report any missing information to the examiner.*

*This paper consists of the following **THREE** tasks in **THREE** sections: A, B and C.*

- A. MASONRY - 6 hours**
- B. CARPENTRY - 6 hours**
- C. PLUMBING - 6 hours**

Test A and B carry 35 marks each while test C carries 30 marks.

Each candidate is allowed 18 hours spread over 2 days plus a rest interval of 1 hour during the examination on the first day to be fixed by the examiner.

*There will be one assistant per two candidates to be allowed for conveying materials and removing waste while carrying out **TEST A** only.*

This paper consists of 9 printed pages.

Candidates should check the question paper to ascertain that all the pages are printed as indicated and that no questions are missing.

TEST A - MASONRY: HEARTH CONSTRUCTION

1. Preamble

The attached drawing shows plans and a section of a hearth constructed in block work and the front hearth formed using bricks on edge. Block work joints are to be keyed while brick work is to be finished flush.

2. Task

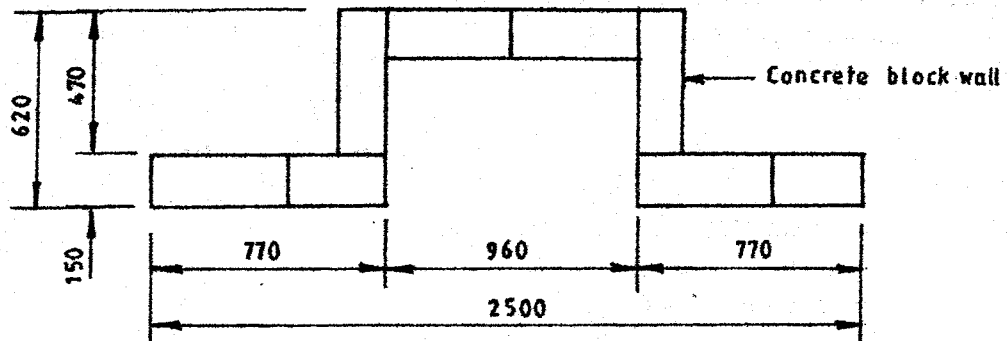
- (a) Layout and construct course 1 block work.
- (b) Complete the bonding for course 2 block work.
- (c) Construct 3 No. courses of block work 720 mm high.
- (d) Form front hearth in bricks on edge.
- (e) Plaster the fireplace with a wood float finish.
- (f) Screed the hearth with a steel float finish..
- (g) Block work joints to be keyed.
- (h) Brick work joints to be finished flush.

3. Materials

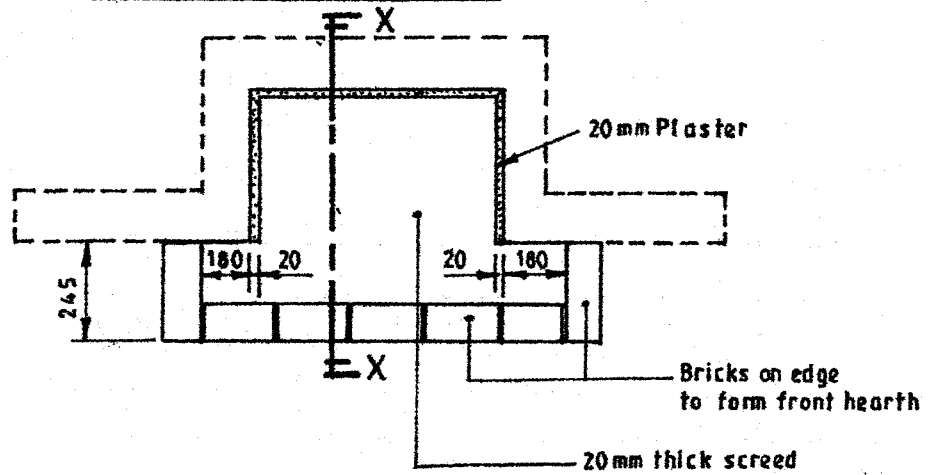
Item No.	Description	Size (mm)	Quantity
1	Concrete blocks	450 x 225 x 150	26
2	Concrete/clay blocks	230 x 115 x 75	10
3	Mortar	-	Sufficient
4	Timber batten	1500 x 45 x 45	1

4. Tools and equipment.

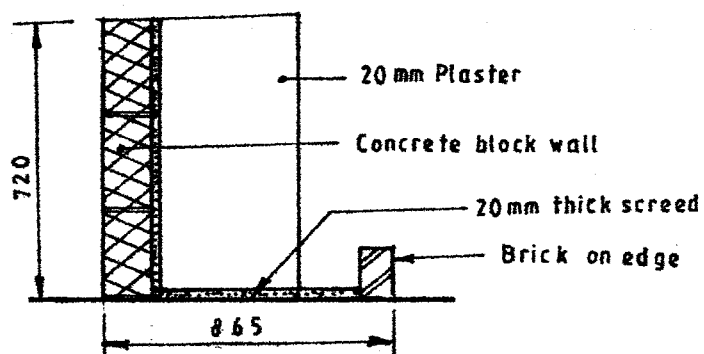
Basic masonry tools and equipment.



PLAN COURSE 1 - BLOCKWORK



PLAN - HEARTH



SECTION X-X

TEST B - CARPENTRY: PART OF A DOOR FRAME

1. Preamble

The attached drawing shows elevations and joint details of part of a door frame. The front of the frame is rebated to receive a glass panel. The back of the frame is chamfered as shown in the drawings.

2. Task

- (a) Plane the members of the frame to the finished sizes.
- (b) Mark out and cut the joints A and B.
- (c) Assemble the frame dry.
- (d) Sand the surfaces clean.

3. Materials

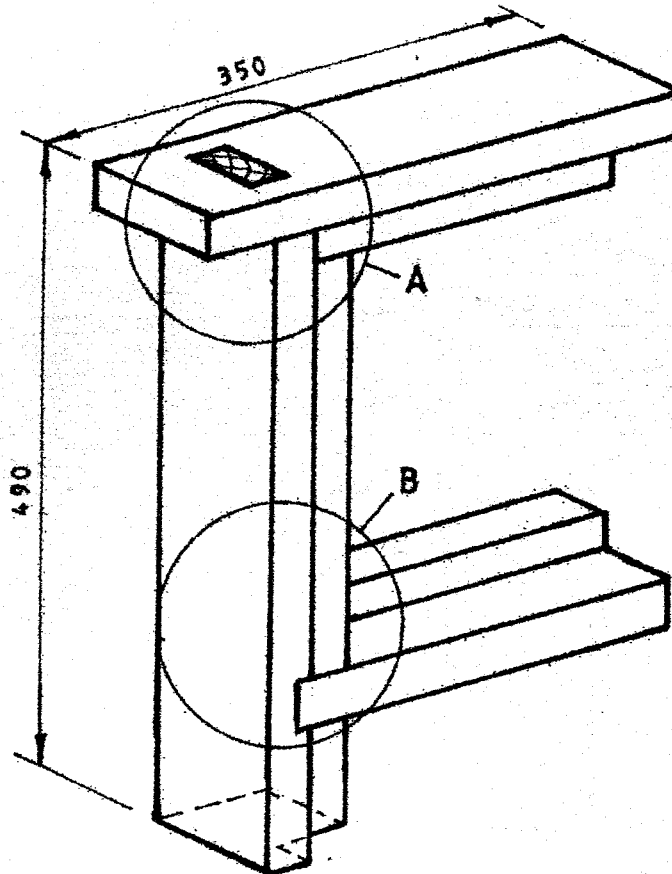
- (a) Good quality timber planed to the following finished sizes.

Item No.	Description	Size (mm)	Quantity
1	Top rail	350 x 90 x 60	1
2	Middle rail	350 x 90 x 60	1
3	Stile	490 x 90 x 60	1

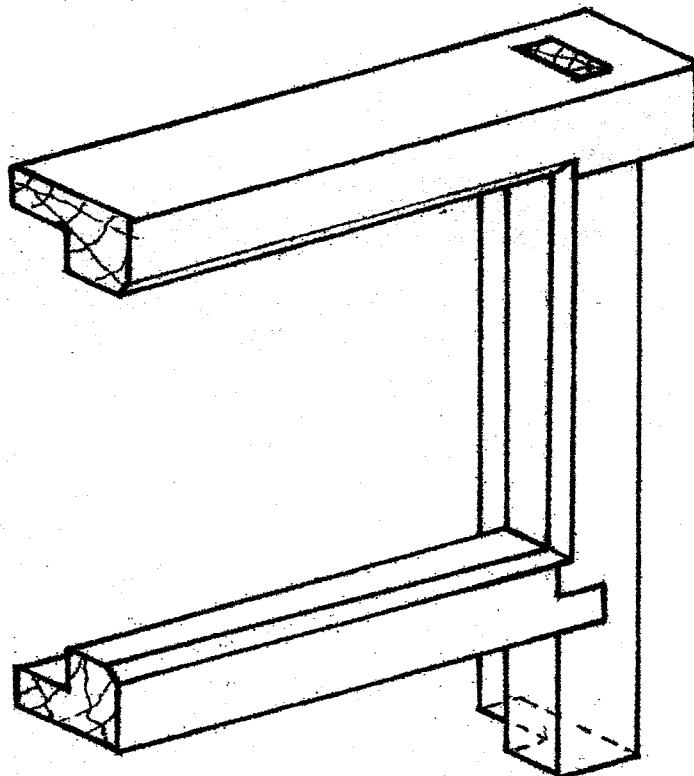
- (b) 1 No sand paper No. 1.

4. Tools and Equipment

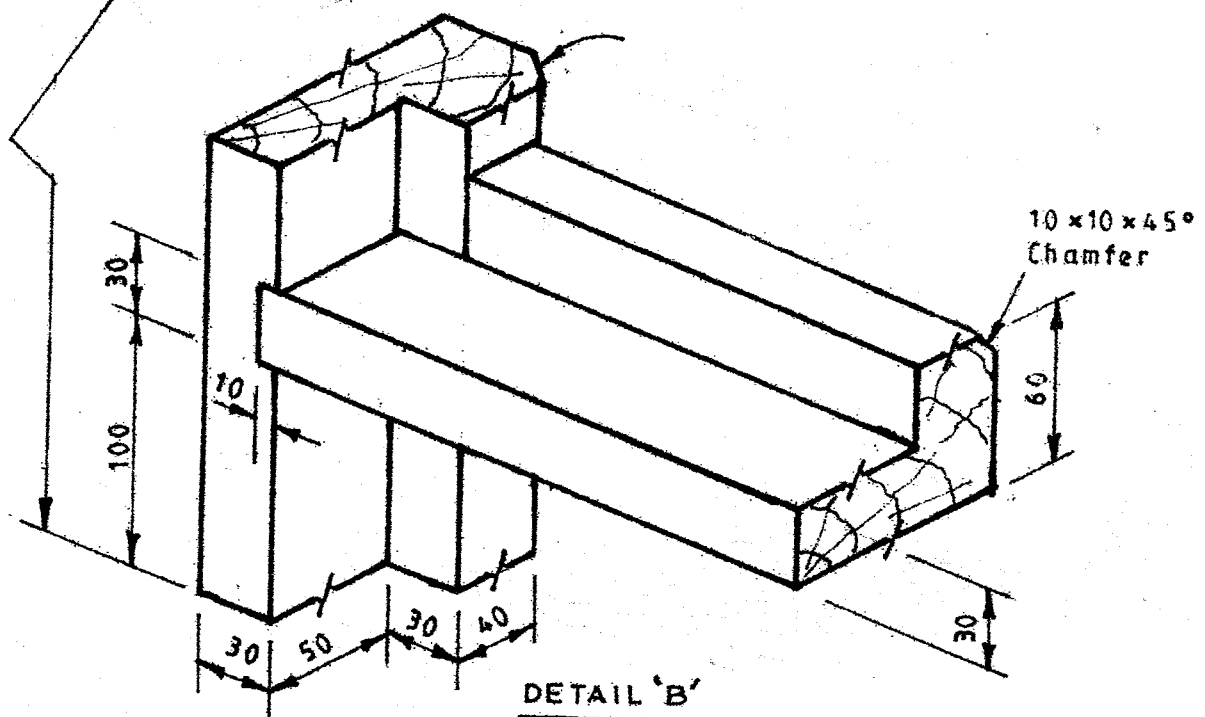
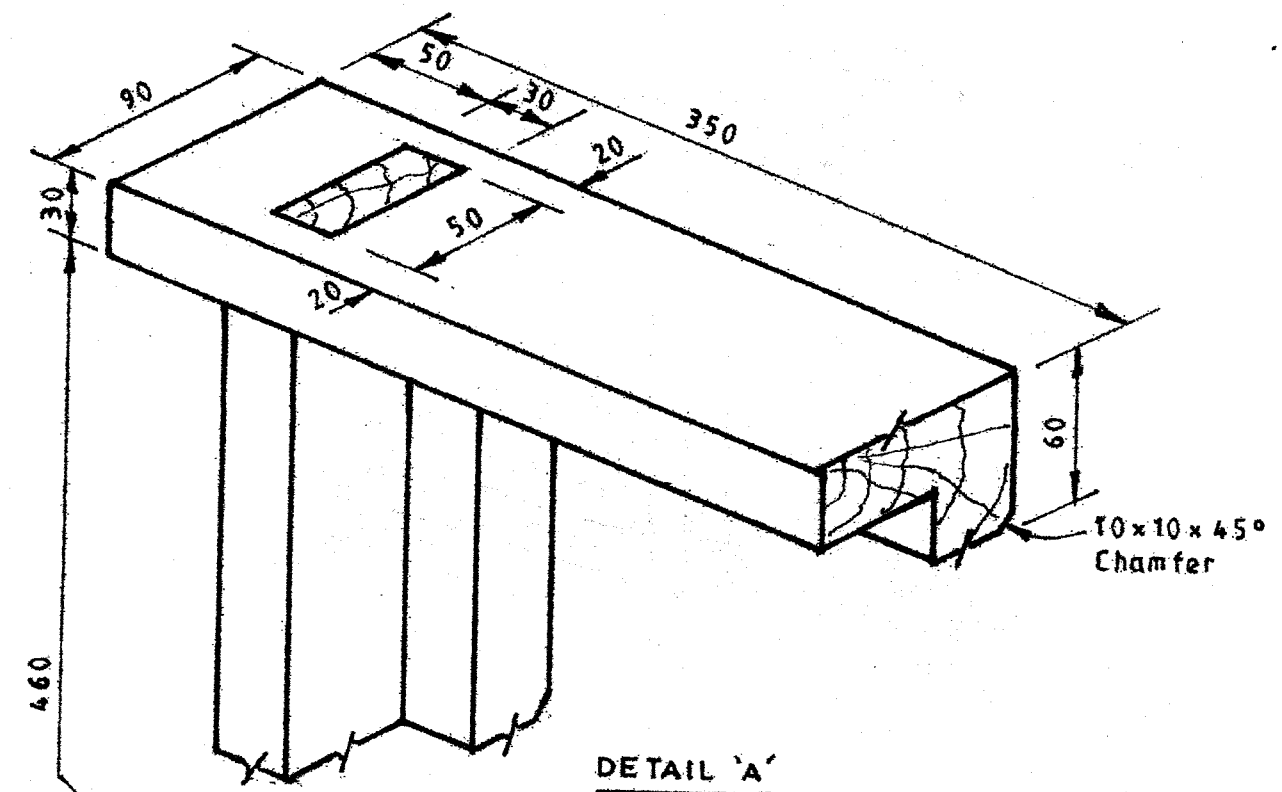
Basic carpentry tools and equipment.

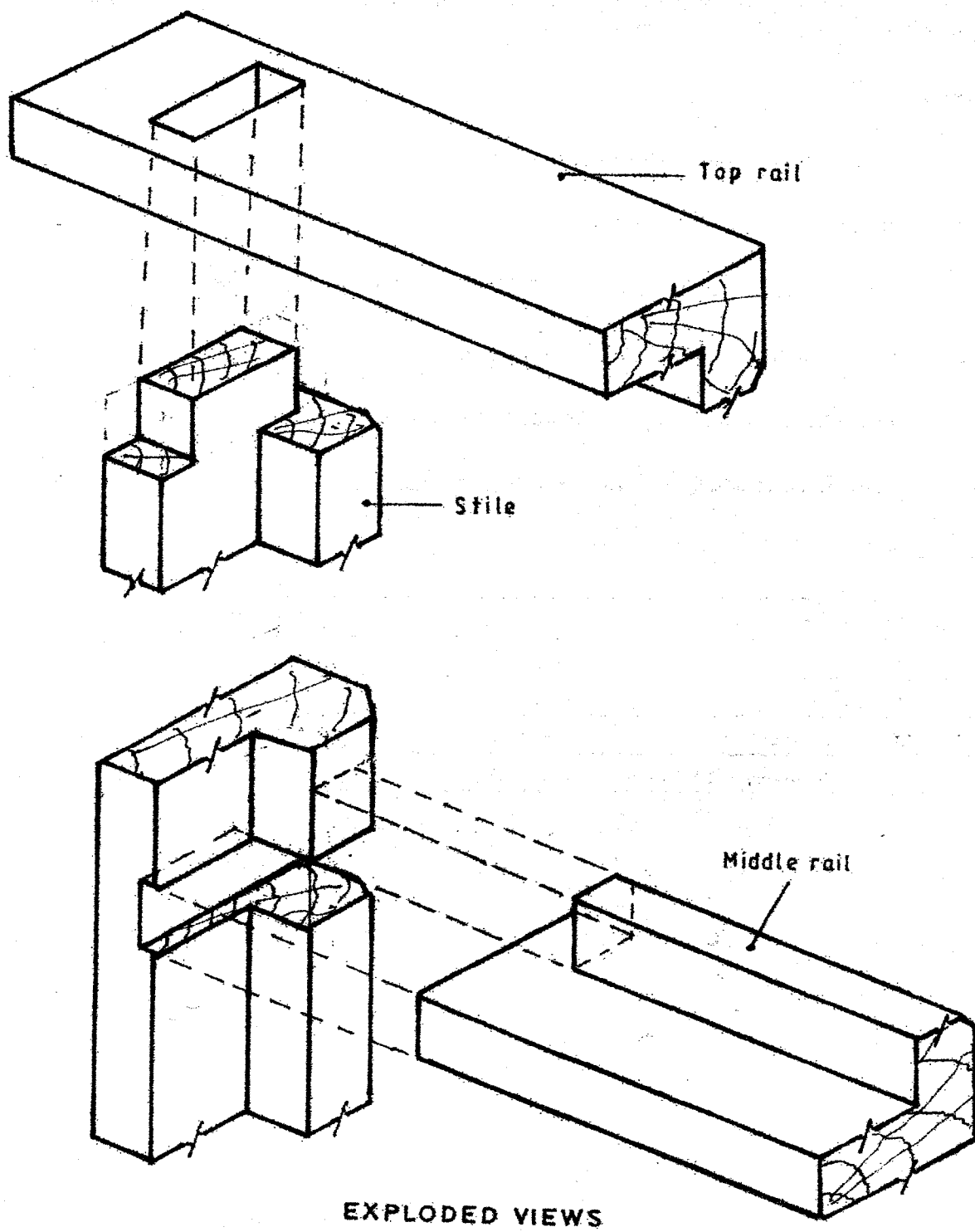


FRONT ELEVATION



BACK ELEVATION





EXPLODED VIEWS

TEST C - PLUMBING: SHEET METAL WORK

1. Preamble

The attached drawings show three pieces of galvanized iron sheets, gauge 24, joined to form the shape shown.

2. Task

- (a) Mark out and cut the sheet to the given sizes.
- (b) Bend sheet A to form the L - shape.
- (c) Form sheet B and drill the holes \varnothing 3 mm counter sink for rivets.
- (d) Mark out and drill holes \varnothing 3 mm on sheet C.
- (e) Form the simple seam joint between sheets A and B.
- (f) Join sheets B and C with flat head solid rivets.

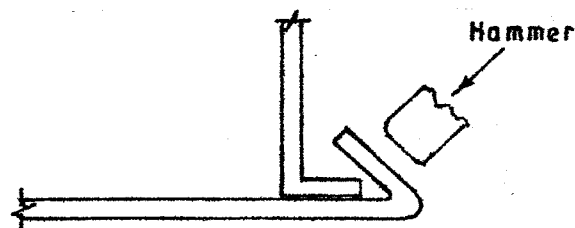
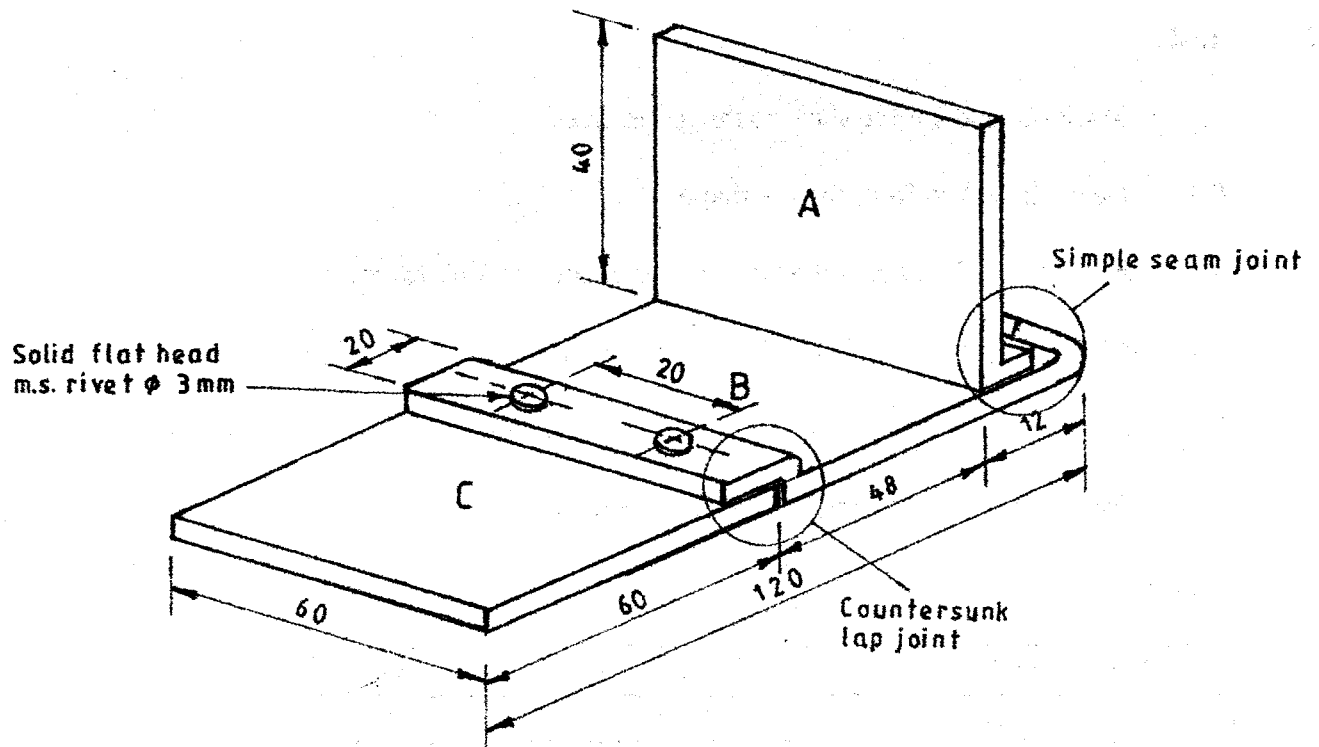
3. Materials

Item No.	Description	Size (mm)	Quantity
1 - A	G. I. sheet	60 x 52	1
2 - B	G. I sheet	92 x 60	1
3 - C	G. I sheet	60 x 60	1
4	Flat head solid rivets	10 x \varnothing 3	2

4. Tools and Equipment

Basic plumbing tools and equipment.

Use gauge 24 g.i. sheet



SIMPLE SEAM JOINT

THIS IS THE LAST PRINTED PAGE.