

CONTINUOUS ASSESSMENT TEST

STANDARD EIGHT - YEAR 2019

SCIENCE

8



STEP FLYER 001

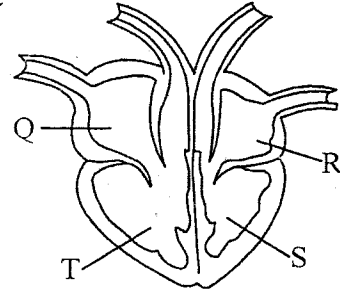
Time : 1 Hour 40 Mins

READ THESE INSTRUCTIONS CAREFULLY.

- You have been given this question paper and a separate answer sheet. The question paper contains 50 questions.
- Make sure that you have written on the answer sheet.

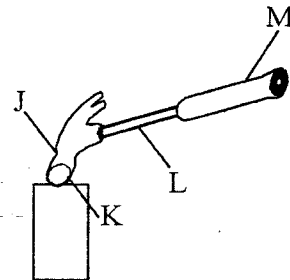
- Which one of the following is **not** a source of electricity?
A. Wind-driven generator.
B. Torch.
C. Solar panels.
D. Bicycle dynamo.
- Which one of the following is both a modern and traditional method of food preservation?
A. Canning.
B. Use of honey.
C. Use of low temperature.
D. Salting.
- The following are some of the effects of drug abuse
(i) withdrawal symptoms
(ii) accident caused by drunkenness
(iii) engagement in criminal activities
(iv) memory loss
Which one shows health effects of drug abuse only?
A. i, iv B. ii, iii
C. ii, iv D. i, iii
- Which one of the following is **not** a crop pest control measure?
A. handpicking
B. Pruning.
C. Weeding.
D. Drenching
- Which animal feed below provides the livestock with both energy and protein?
A. Fish meal.
B. Salt lick.
C. Desmodium.
D. Molasses.
- Which material below can be used instead of plasticine when modelling the solar system?
A. Softboard.
B. Wet sandy soil.
C. Papier mache
D. Pins

- The diagram below shows the mammalian heart



Which letters represents the chambers that pumps deoxygenated and oxygenated blood respectively?

- A. R, Q B. S, T
C. T, S D. Q, S
- Which mixture below can be separated by use of magnet?
A. Iron fillings and cobalt.
B. Steel wool and graphite.
C. Pieces of copper and aluminium.
D. Sand and silver.
 - Which one of the following is a poor conductor of heat?
A. Glass. B. Nail.
C. Copper. D. Tin.
 - The diagram below shows a simple lever in use



Which letter represents the best position of effort?

- A. L B. K C. S D. M
- Which one of the following is the largest component of the environment?
A. Water.
B. Soil.
C. Living organisms
D. Air.

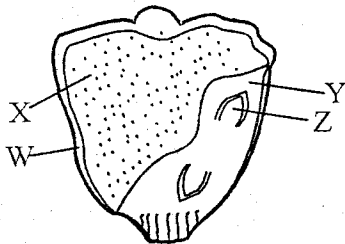
12. Which pair of nutritional deficiency diseases below are caused by lack of mineral salts in the diet?

- A. Marasmus and Kwashiorkor.
- B. Anaemia and kwashiorkor.
- C. Marasmus and rickets.
- D. Anaemia and rickets.

13. Which statement below is false about force?

- A. It can move an object at force.
- B. Force is measured in newtons.
- C. Force can change the state of an object.
- D. Weight is a type of force.

14. The diagram below shows parts of a maize seed



Which part is correctly matched to its function?

- A. X - Protects the inner parts
- B. Y - provides food to the embryo plant
- C. W- stores food
- D. Z- grows into shoot -

15. Which one of the following is the best method of controlling the spread of malaria?

- A. Sleeping under treated mosquito nets.
- B. Killing mosquitoes using insecticides.
- C. Destroying mosquito breeding sites.
- D. Vaccination against malaria.

16. Which one of the following is **not** a physical change in adolescent girls?

- A. Hair grows on the chest.
- B. Pimples may appear on the face.
- C. Rapid body growth.
- D. Sweat glands become active.

17. The following are descriptions of a certain method of grazing?

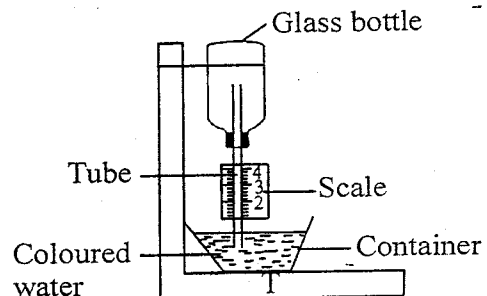
- (i) permanent fence on the perimeter
 - (ii) no gates between the units
 - (iii) movable fence separates the units
- The above method of grazing is most likely to be;

- A. paddocking
- B. stall feeding
- C. tethering
- D. strip grazing

18. Which one of the following is **not** a characteristic of a turtle?

- A. It is cold blooded.
- B. It lays eggs on land.
- C. It breathes through lungs.
- D. Its body covered with scales.

19. The diagram below shows a simple weather instrument



Which one of the following is **not likely** to happen on a hot day?

- A. air in the glass bottle expands.
- B. coloured water rises up the tube
- C. water level in the container rises
- D. higher reading on the scale

20. What is the percentage of the gas required by plants during respiration?

- A. 0.03%
- B. 21%
- C. 0.97%
- D. 78%

21. Which one of the following is **not** an advantage of friction force?

- A. It wears out moving parts of machines -
- B. It improves stability of a moving object
- C. It can be used in heat production
- D. It enables moving objects to stop.

22. Which food below is **not** rich in iron?

- A. Millet.
- B. Liver.
- C. Kidney.
- D. Green vegetables.

23. All the following takes place in the small intestine **except**

- A. digestion of food
- B. production of digestive juice
- C. absorption of calcium
- D. absorption of proteins

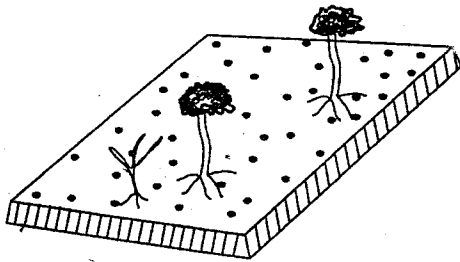
24. Which one of the following is **not true** about the first two stages of HIV infection?

- A. No visible signs and symptoms.
- B. The patient tests positive.
- C. One can transmit the HIV virus.
- D. The patient looks healthy and strong.

25. Which disease below is **not** correctly matched to the time at which it is given?

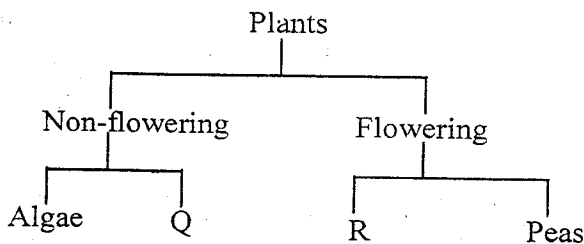
- A. Measles - 9 months
- B. Pertusis - 10 weeks

- C. Tuberculosis - at birth
D. Yellow fever - 14 weeks
26. Which one of the following is **not** a straight fertilizer?
A. Diammonium sulphate.
B. Calcium ammonium nitrate.
C. Single super phosphate.
D. Mono ammonium phosphate.
27. Which one of the following is **not** a way of using water sparingly?
A. Using drip irrigation.
B. Repairing leaking taps.
C. Draining stagnant water.
D. Insulating hot water tanks.
28. The diagram below shows a type of soil erosion



The above type of soil erosion is most likely to be;

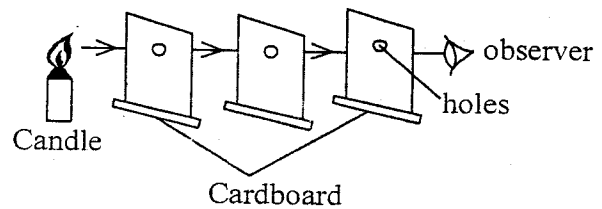
- A. gully erosion
B. sheet erosion
C. rill erosion
D. splash erosion.
29. The chart below shows a simple classification of plants



Which plants can correctly fit in the parts marked Q and R respectively?

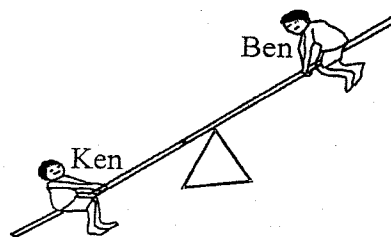
- A. Bracket tree, cypress.
B. Mould, maize.
C. Sisal, sunflower.
D. Liverworts, cactus.
30. Which blood component of blood transports carbon dioxide?
A. Plasma.
B. White blood cells.
C. Red blood
D. Platelets.

31. Study the set up below then use it to answer questions 31.



From the above set up they concluded that light;

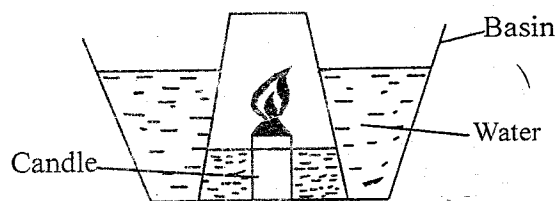
- A. can be reflected
B. travels in a straight line
C. bends from one medium to the other
D. travels in all direction
32. Which liquids below evaporated fastest?
A. Water.
B. Methylated spirit.
C. Kerosene
D. Petrol.
33. Which one of the following is the correct procedure of separating a mixture of sand, iron fillings and salt?
A. Use of magnet, dissolving, filtering, evaporation
B. Dissolving, use of magnet, evaporation, filtering
C. Sieving, use of magnet, dissolving, evaporation
D. Picking, decanting, use of magnet, evaporation
34. Two pupils balanced on a see-saw as shown below



For them to balance;

- A. Ben should sit closer to the pivot
B. pivot should be moved towards Ken
C. Ken should move away from the pivot
D. Both pupils should sit closer to the pivot
35. A patient developing red spots on the chest, high fever and blood in stool is most likely suffering from;
A. Bilharzia
B. Tuberculosis
C. Typhoid
D. Cholera

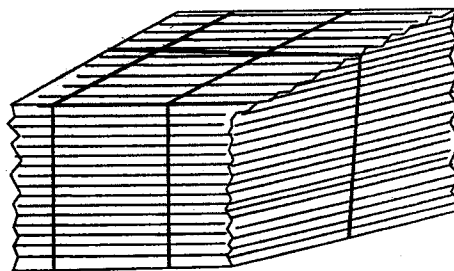
36. Which one of the following is a poor conductor of electricity?
 A. Pencil.
 B. Razor blade.
 C. Copper coin.
 D. Thread.
37. The following are characteristics of soil;
 (i) retains a lot of water
 (ii) has poorest capillarity
 (iii) cracks when dry
 (iv) has smallest particles
 (v) drains just enough water
 Which ones are characteristic of clay soil?
 A. ii, iv, v B. i, ii, iv
 C. i, iii, iv D. ii, iii, v
38. Which one of the following is **not** a tuber crop?
 A. Onions. B. Yams.
 C. Carrot. D. Cassava.
39. Which type of teeth are used for cutting and tearing?
 A. Canines, molars and incisors.
 B. Incisors only
 C. Premolars and canines.
 D. Incisors and canines
40. Which pest below cannot be controlled by practising rotational grazing?
 A. Tick. B. Tsetse fly
 C. liverfluke D. tapeworm
41. Which one of the following is **not** an interdependence between plants?
 A. Support. B. Habitat.
 C. Pollination. D. Shade.
42. Standard six pupils carried out the experiment shown below



From the above experiment they concluded that;
 A. carbon dioxide does not support
 B. air occupies space
 C. parts of air supports burning
 D. all components of air supports burning

43. Which materials below is **not** required when constructing a simple wind vane?
 A. Scale B. Metal sheet.
 C. Post. D. Wire.

44. Which method of heat transfer reaches a person seated next to a burning jiko?
 A. Convection.
 B. Radiation.
 C. Conduction.
 D. Convection and radiation.
45. Which one of the following is an illegal drug in Kenya?
 A. Inhalants. B. Khat.
 C. Alcohol. D. Tobacco.
46. Which pair below requires an increase in temperature?
 A. Expansion and evaporation.
 B. Condensation and melting.
 C. Melting and construction.
 D. Contraction and freezing.
47. Which material below cannot allow light to pass through it?
 A. Spirit. B. Kerosene.
 C. Milk. D. Air.
48. Which one of the following is least suitable for preparing the animal feed drawn below?



- A. Star grass
 B. Maize stalk.
 C. Kikuyu grass.
 D. Savannah grass.

49. In which part of the breathing system is air warmed?
 A. Trachea B. Lungs.
 C. Diaphragm. D. Nose.
50. Which one of the following is **not** a characteristic of nimbus clouds?
 A. Shaped like mountains.
 B. Appears low in the sky.
 C. They are rain-bearing clouds
 D. They look like bundles of cotton wool.