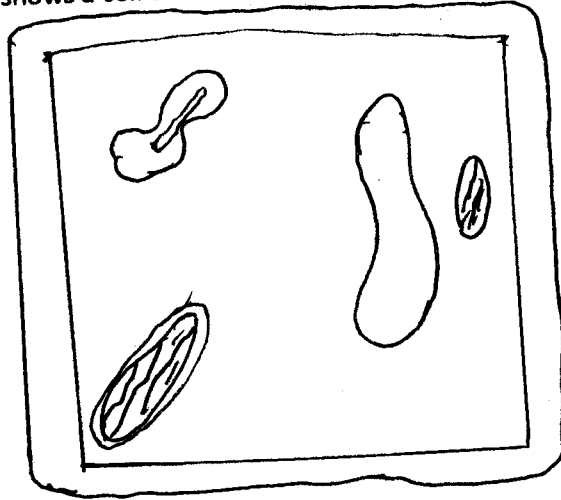


GATITU SECONDARY SCHOOL, P.O. BOX 327 – 01030, GATUNDU.
FORM 1 BIOLOGY. TUNE UP EXAMINATION. TERM 3 2015.

1. The diagram below shows a cell as seen under electron microscope



i) State whether its an animal or plant cell. (1mk)

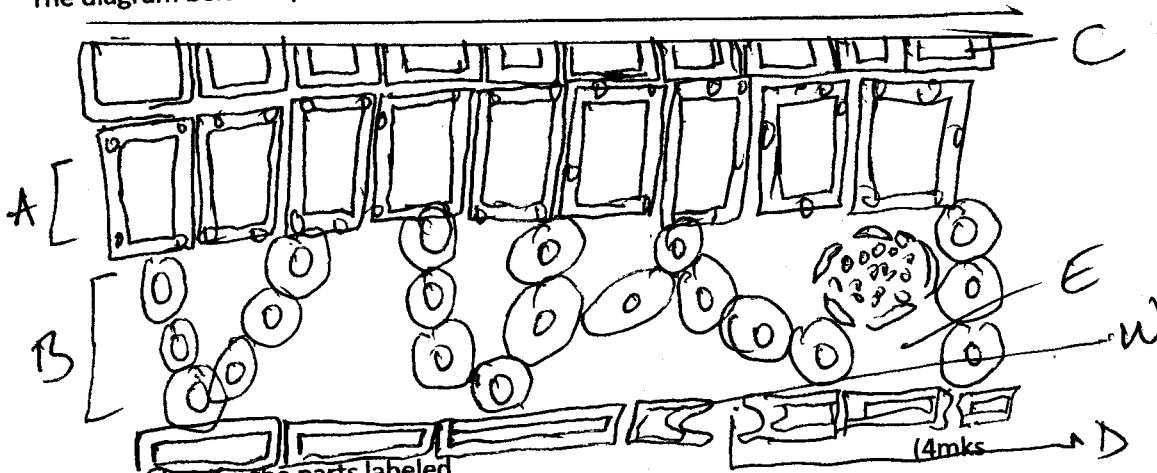
b) Give 2 reasons shown in the diagram that support your choice in
i(a) above (4mks)

i)

ii)

2. Give the formula for working out the magnification while using the light microscope. (2mks)

The diagram below represent the internal structure of a leaf.



i) Identify the parts labeled.

- A
- B
- D
- E

ii) State any two functions of the part labeled C (4mks)

- i)
- ii)

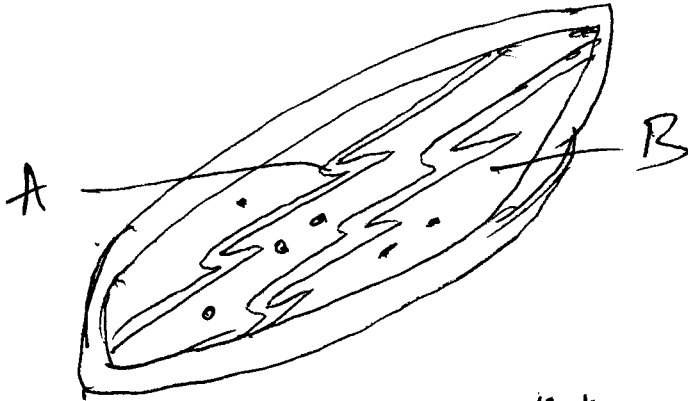
iii) Give 2 functions of the part labeled W (2mks)

- i)
- ii)

3. Give any 3 products of light stage of photosynthesis. (3mks)

- i)
- ii)
- iii)

4. Below is a diagram of a common organelle found in a plant cell?



i) Identify organelle (1mk)

ii) Label parts (2mks)
A

B

iii) State the function of the organelle. (2mks)

5. A student observed the field of view while using a light microscope and counted 5 cells as shown Below.

