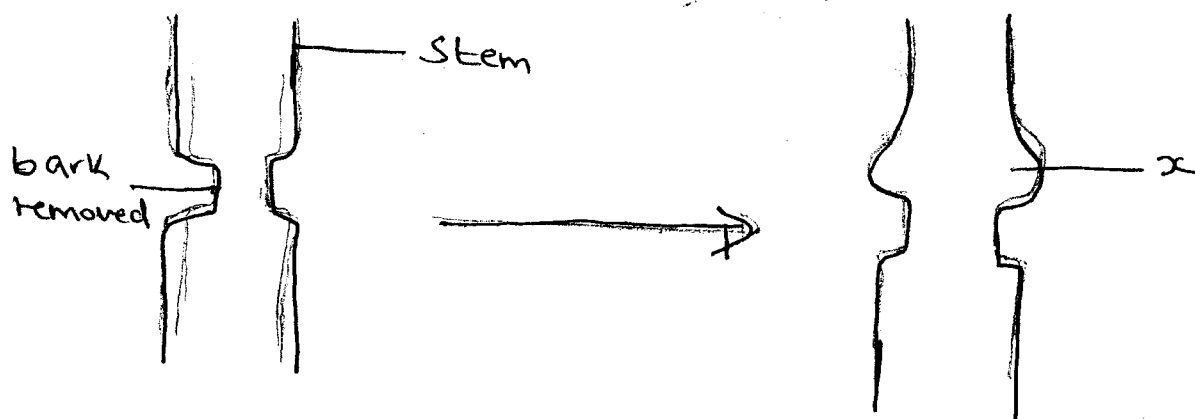


ADMNO.....NAME.....CLASS.....

MID TERM BIOLOGY EXAM FORM 2 2016 TERM TWO.

1. The diagram below represents an experiment that was set up to investigate a certain process.



(i) Name the process that was being investigated (1mks)

.....  
.....

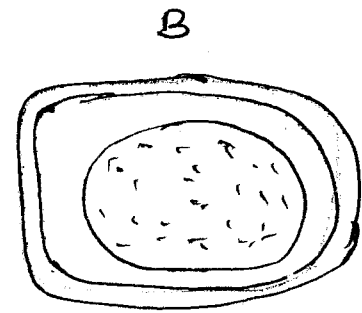
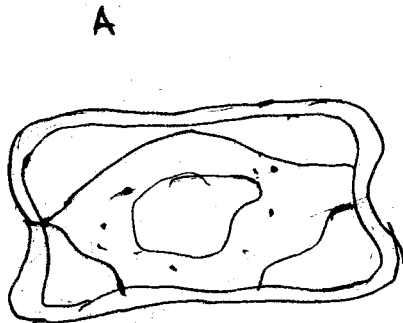
(ii) Give reasons for the swelling in diagram 2 above (3mks)

.....  
.....  
.....  
.....

.....  
.....  
(iii) Which part of the vascular bundles is left undamaged when the stem is ringed (1mk).....

.....  
(iv) What is the source of the substance that has made the part labelled X to swell? (2mks).....

.....  
2) The diagram below represent cells A and B placed in 2 different solutions. Study the diagrams and answer the questions that follows.



(a) Identify the nature of the solutions into which each cell was placed (2mks).

A.....

B.....

(b) Name the physiological process responsible for the observed result (1m).....

.....

(c) Give the correct biological term used to describe cells (2mks).

A.....

B.....

(d) Describe what would happen to red blood cells if placed in solution in which cell B was placed (3mks).

.....

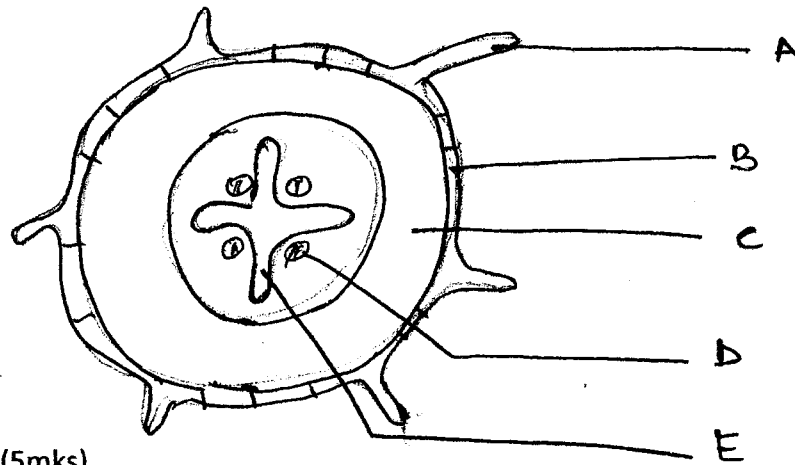
.....

.....

.....

.....

3) The diagram below illustrate the arrangement of tissues in a dicotyledonous root



(a) Label parts (5mks)

A.....

B.....

C.....

D.....

E.....

(b) Give 2 adaptations shown by part E to its function(4mks).....

(i).....  
.....(i)

i).....  
.....

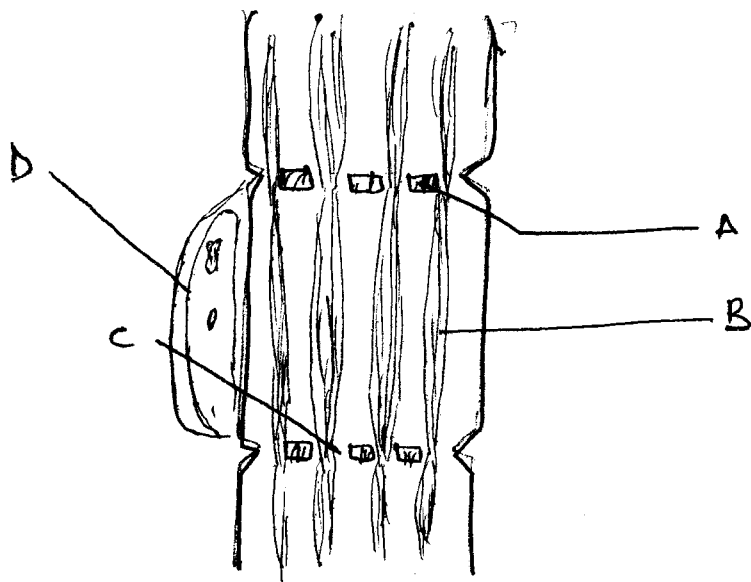
(c) Give any 2 functions of the root (4mks)

.....

(i).....

(ii).....

4) The diagram below represent a simplified phloem tissue .



(a) Label parts below (4mks)

A.....

B.....

C.....

.....

D.....

(b) Give the role played by the following parts. (6mks)

A.....

B.....

D.....

..

5a) State 2 adaptations of the red blood cells to their function (4mks).

(i)

.....  
.....

(ii).....

.....

(b) List 2 functions of blood apart from its transport functions (4mks).

a).....

b).....

6. List 3 functional differences between arteries and veins (6mks).

.....  
.....  
.....  
.....  
.....

.....  
.....

7 Draw a well labelled diagram of mammalian heart and name the following parts

Vena cava, tricuspid valve, bicuspid valve, right auricle, left ventricle, aorta, pulmonary artery, septum, valve tendon, right ventricle (10mks).

8a). Name the 3 Antigens that determine blood groups (3mks)

