

FOCUS A365

Another Manyamfranchise.Com Evaluation Test

FORM 3 TERM 1 Biology pp3 EXAMINATIONS 2018

NAME: _____ ADM NO: _____ CLASS: _____

INSTRUCTUIONS TO THE CANDADATES

(a) Write your name and school number in the spaces provided above.

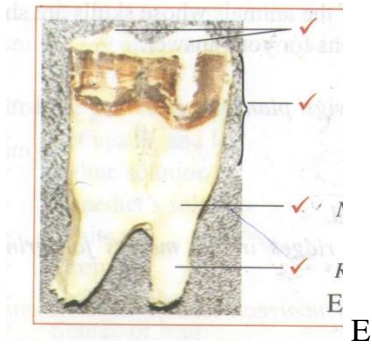
(b) Answer all the questions in the spaces provide.

(c) You are required to spend the first 15 minutes of the 1 $\frac{3}{4}$ hours allowed for this paper reading the whole paper carefully before commencing your work. Additional papers must not be inserted.

FOR EXAMINERS USE ONLY.

QUESTION	MAXMUM SCORE	CANDIDATES SCORE
1	16	
2	12	
3	12	
TOTAL SCORE	40.	

1. Below are photographs of specimens Labelled E and F which were obtained from the same animal.



(a) With reasons identify E and F

1mk

E

Reasons

1mk

F

1mk

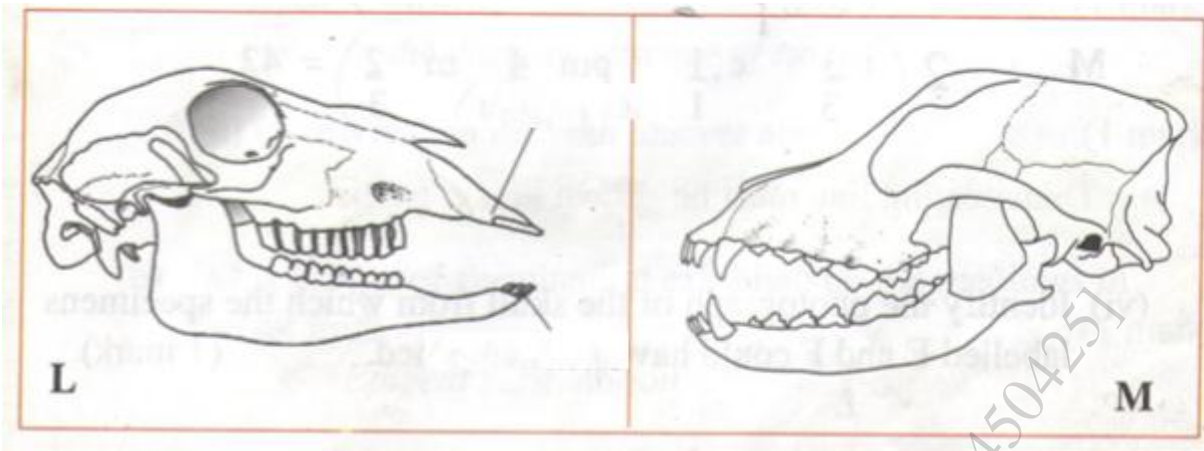
Reasons

1mk

(b) On the photograph E, Label four parts of the specimen.

4mks

(c) Examine the following diagrams labeled L and M



(i) Suggest the diet of each of the animals whose skulls are shown in the diagram. Give reasons for your answer. 1mk

L

Reason

1mk

M

1mk

Reason

1mk

(ii) Label the incisor tooth in diagram L 1mk

(iii) Write the dental formulae of the animals whose skulls are shown in diagrams L and M

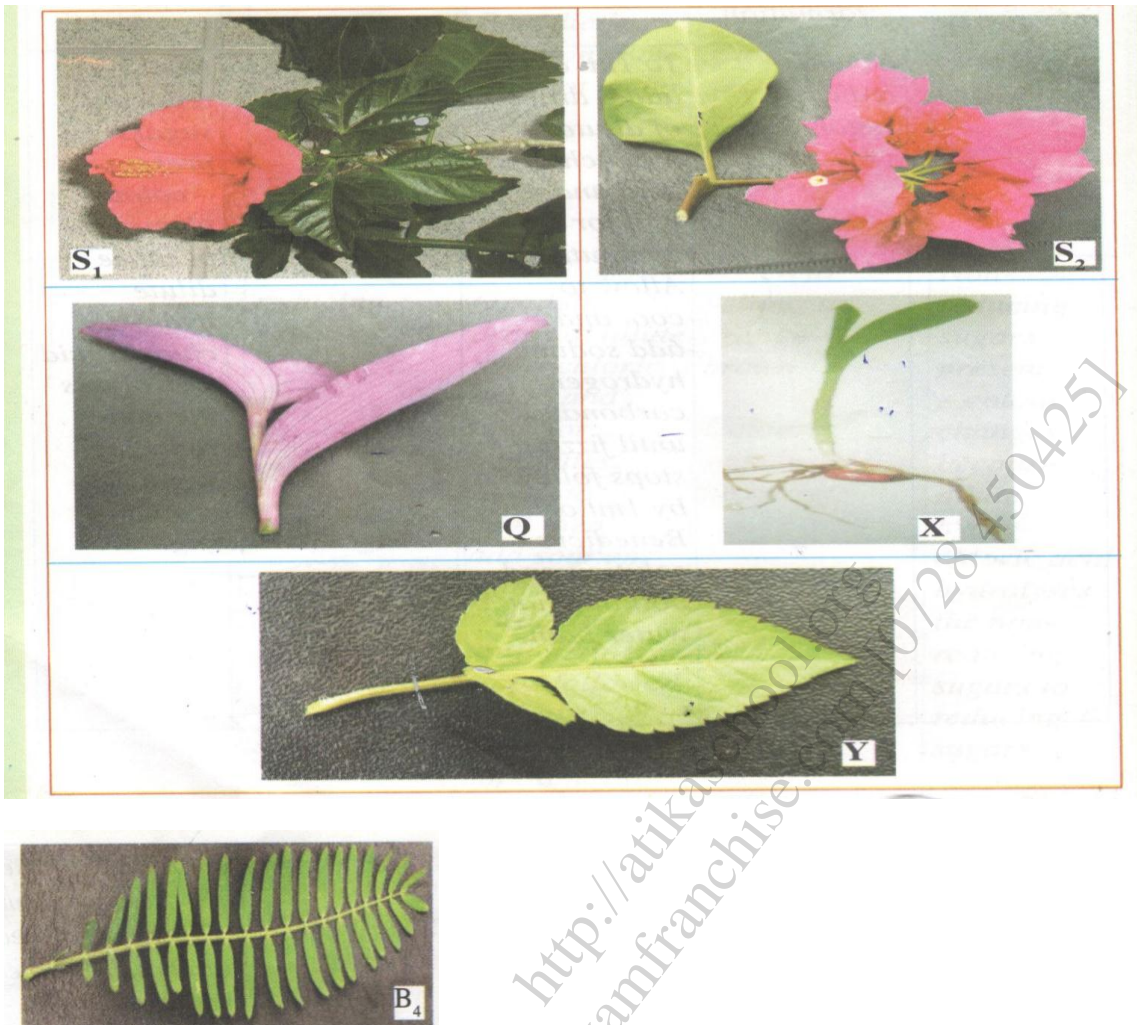
L 1mk

M 1mk

(iv) On the appropriate photograph, label the position where the horny pad would be found in a living animal

1mk

2. The dichotomous key below can be used to identify the specimens in the photograph.



- 1.(a)Leaves parallel veined go to 2
 (b) Leaves network veined go to 3
- 2(a)Leaves green.....Graminae
 (b)Leaves purpleCommelinaceae
- 3.(a) Leaves simple.....go to 4
 (b)Leaves compoundgo to 5
- 4.(a)Leaf margin smoothNyctaginaceae
 (b)Leaf margin serrated..... Maluaceae
- 5.(a)Trifoliolate leaf..... Asteraceae
 (b)leaf Pinnate.....Cassia.

(a) Using the dichotomous key identify the specimens and show the sequence of steps (e.g 1b,2b,3a,6b) In the key that you followed to arrive at the identify of each specimen . 12 mks

Specimen	steps followed	identify
S ₁		
S ₂		
Q		
X		
Y		
B ₄		

3. You are provide with solutions Labelled P, iodine solution, benedict's solution and a filter paper.

(a) Use iodine solution to test for the presence of food substances in solution P

Food substance .

1mk

Procedure

1mk

Observation

1mk

Conclusion

1mk

(b) Use Benedict's solution to test for the presence of food substance in solution P

Food Substance .

1mk

Procedure

1mk

Observation

1mk

Conclusion

1mk

(c) Using the filter paper ,Test for the presence of lipids in solution P.
Procedure .

2mks

Observation

1mk

Conclusion

1mk

<http://atikaschool.org>
sales@manyamfranchise.com [0728 450425]