

451/1
COMPUTER STUDIES
PAPER 1
(Theory)
2016
2½ hours

ALLIANCE HIGH SCHOOL
FORM 4 END OF TERM 1 2016

COMPUTER STUDIES
Paper 1
(Theory)
2½ hours

INSTRUCTIONS TO CANDIDATES

This paper has two sections; A and B.
Answer **ALL** the questions in section A and B.
All answers should be written in the space provided on the question paper.

For Official Use Only.

SECT.	Question.	Score
A	1 – 15	
B	16	
	17	
	18	
	19	
	20	
Total Marks		

This paper consists of 9 printed pages
Candidates should check the question paper to ensure that all the
Printed pages are printed as indicated and no questions are missing.

Turn over

SECTION A (40 MARKS)

1. As a computer student you have been asked to assist in buying an input device. State any **four** factors to consider when buying input devices. [4]

2. In the recent past there has been a paradigm shift of use of CRT monitors to the use of flat screen monitors. List **three** advantages flat screen monitors have over the traditional CRT monitors. [3]

3. One category of system software is utility *software*.

(i) What is meant by utility software? [1]

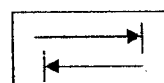
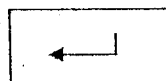
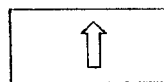
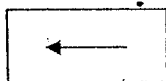
(ii) Give **two** examples of utility software. [2]

(iii) Describe Firmware [2]

4. Distinguish between a workbook and a worksheet as used in spreadsheets. [2]

5. The cells D3 to D11 of a worksheet contain remarks on student's performance such as very good, good, fair and fail depending on the average mark. Write a formula that can be used to count all students who have the remark "very good". [3]

6. The following are symbols of some keys found on the keyboard. Name the keys represented by the symbols. [2]

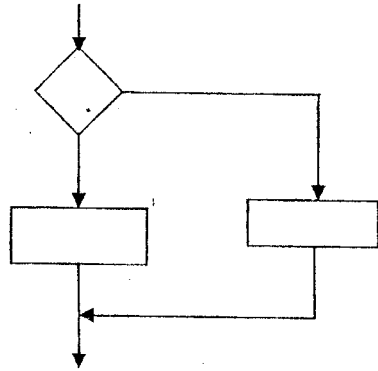


7. a) Define authenticity as used in software acquisition [1]
- b) List **four** ways of acquiring software in an organization [2]
8. Define the term artificial intelligence [1]
- b) List **three** branches of artificial intelligence [3]
9. What is the difference between logical and physical file? [2]
10. Differentiate between Formatting and Editing features in Word Processing [2]
11. State **two** applications in which it is appropriate to use batch processing. [2]
12. Differentiate between Internet and Intranet [2]
13. List **three** services offered by Internet Service Providers? [3]
14. Describe **two** characteristics to show that a computer is infected with a malware. [2]
15. List **four** functions of an operating system. [2]

SECTION B

Answer ALL questions from this section

16.



a) Name the control structure named above

[1]

b) State three characteristics of low level languages

[3]

c) Describe **two** differences between the **while ..do** and the **repeat..until** statements .

[2]

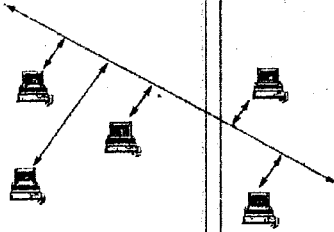
d) Write an algorithm and draw a flowchart to print the square of all numbers from 1 to 10.

[9]

17. A small organization has several computers in an office connected to form a network as shown below.

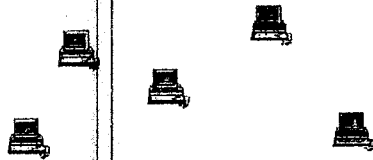
(a) What is the name of this network topology?

[1]



(b) The network could instead be connected as a star topology.

(i) Draw the connections between the computers in a star topology in the diagram below.



[1]

(ii) State **one** advantage of a star network compared with the network you have named in (a) above, and give a reason.

[2]

Advantage
Reason

(c) Write the following abbreviation in full as used in computer networks and give an example of each.

[2]

(i) D. T. E

(ii) D. C. E

d) Explain how the following ways of communication differ.

[2]

(i) Broadcast

(ii) Point-to-point

e) Name the network device shown



[1]

ii) State **two** functions of the device named above

[2]

f) State the function of each of the following:

i. network protocol

[1]

ii. hub

[1]

g) Communication in a network can take the form of simplex, half duplex or full duplex. Briefly explain these terms.

[3]

18. What is a Database Management System (DBMS)?

[1]

(b) Define the following terms as used in a database.

[1]

(i) Primary key

(ii) Foreign

c) Describe four advantages of database systems.

[4]

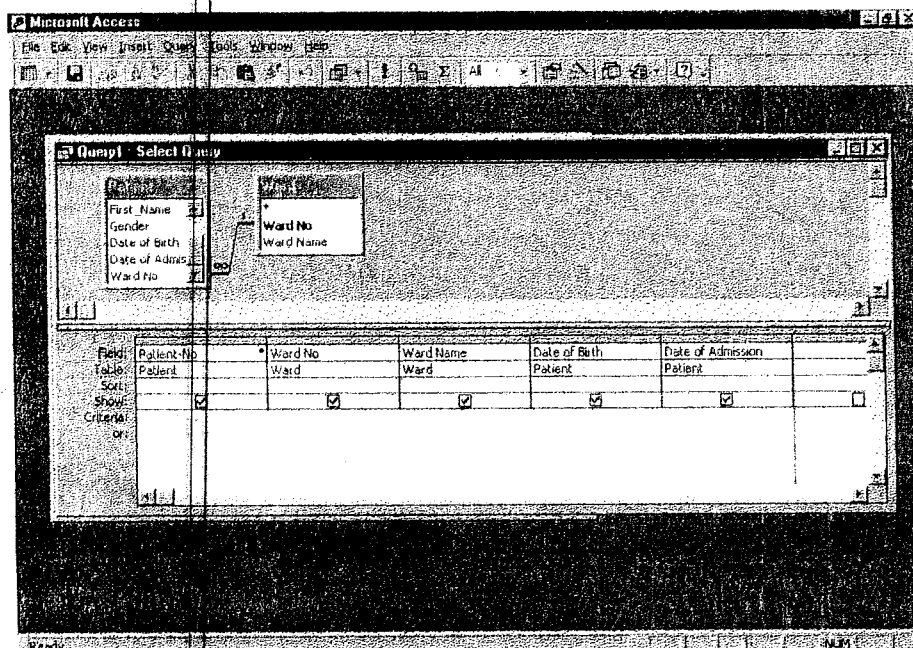
d) Differentiate between the following pair of terms as used in database design:

[2]

i. input mask and design

ii. table and query

b) The following is an extract of a select query (QBE) in Microsoft Access, about a Hospital Database.



Turn over

i) Other than **select queries**, name two other types of queries. [2]

ii) Write an expression that will return the year of Admission for patient. [2]

(c) Explain the following concepts as used in a spreadsheet.

i) Automatic recalculation. [2]

ii) What if analysis. [2]

iii) Label [1]

iv) Value [1]

v) Formula [1]

(d) Describe mail merging feature in word processing. [2]

19(a) Describe the following ways of processing (provide examples).

[4]

- i. Batch processing.
- ii. Real time processing.

(b) Differentiate between Multi programming and multi processing operating system.

[2]

(c) Describe the following file organization methods.

[3]

(i) Serial

(ii) Sequential.

(iii) Random

(d) State the following types of transcription errors:

[2]

i. 3455 instead of 3456

ii. Simth instead of Smith

(e) State two roles and responsibilities of each of the following ICT professionals

i) Webmaster

[2]

ii) Network Administrator

[2]