

9.0 RELIGIOUS EDUCATION

9.1 CHRISTIAN RELIGIOUS EDUCATION

The Christian Religious Education examination is Section A part II of the Social Studies paper conducted at the completion of 8 years of primary education. The paper has a total of **30** questions.

In the year 2019, **1,022,578** candidates registered for the examination. This is an increase of candidature by **26,356**. The mean mark dropped from **22.02** in 2018 to **18.81** in 2019. The standard deviation increased from **5.39** in 2018 to **5.46** in 2019.

9.1.1 SYLLABUS COVERAGE AND THE SKILLS TESTED

The areas covered in the syllabus together with the skills tested in the examination are shown in table 25 and 26 below.

Table 25: Areas of Syllabus Coverage in 2019

Areas Tested in the Syllabus	Number of Items	Percentage
Old Testament	09	30.00%
New Testament	11	36.70%
African Religious Heritage	04	13.30%
Contemporary Christian Living	06	20.00%
Total	30	100.00%

Table 26: Skills Tested in the year 2019

Skills	Number of Items
Knowledge	03
Comprehension	06
Application	05
Analysis	08
Synthesis	02
Evaluation	06

The following observations can be derived from tables 25 and 26 above.

- The syllabus was adequately tested
- All the six skills were tested in the paper.
- Teachers need to encourage the candidates to apply the information learnt to attempt questions requiring high order cognitive skills of learning.

9.1.2 GENERAL PERFORMANCE OF THE CANDIDATES IN THE YEAR 2019 KCPE CRE EXAMINATION

The table below shows the mark statistics for the last five years (2015 to 2019)

Table 27: Candidates General Performance in CRE over the last five years

Year	2015	2016	2017	2018	2019
Marked out of	30	30	30	30	30
National Mean	21.25	21.41	21.06	22.02	18.81
Standard Deviation	5.15	5.00	5.23	5.39	5.46

From the table it is noted that there was a decline in the performance of the subject as shown by the mean of **18.81** in 2019 as compared to **22.02** in 2018.

9.1.3 ANALYSIS OF PERFORMANCE IN SELECTED ITEMS

The following is an analysis of the performance of the candidates based on a total population of **1,081,532**. The male population was **542,623** while the female population of **538,909** sat the examination. The girls had a mean mark of **18.85** and a standard deviation of **5.27** while the boys had a mean mark of **18.63** and a standards deviation of **5.67**.

Figure 12

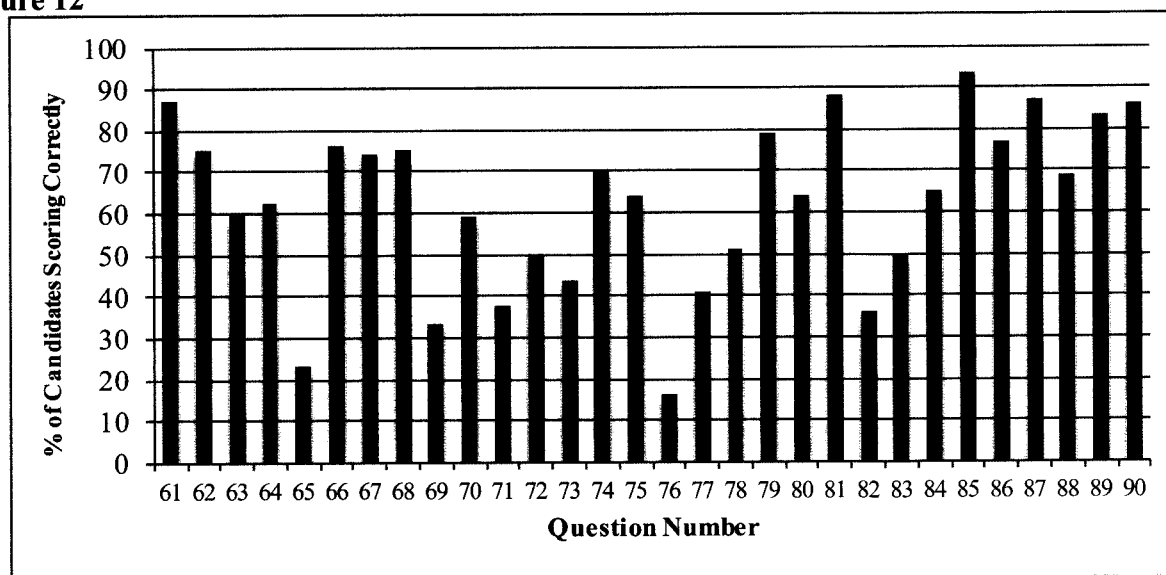


Figure 12 above shows the relative difficulty of each of the 30 items in the year 2019 CRE examination. The analysis is derived from the approximate percentage of candidates scoring correctly in each item in the paper.

Any item where the candidate scoring correctly is 40% or lower is perceived to have been poorly performed. In 2019 there were questions that were poorly performed; candidates scored below 40%. This report will therefore look at the questions that were poorly performed i.e. had 40% and below scoring correctly.

Table 28: Questions which recorded a facility index of 40% and below

Question Number	65	69	71	76
% Answering the item correctly	22.74	33.30	37.67	15.80

The discussion will focus on analysis of the items given above based on the ideas, skills and thinking processes that candidates may have gone through so as to arrive at the correct responses. It also focuses on the misconceptions that may have led the candidates to the wrong choices. The asterisk (*) in the response pattern denotes the correct response.

Question 65

Which one of the following was used by Moses to seal the covenant between God and the Israelites at Mount Sinai?

- A. Altar.
- B. Blood of oxen.
- C. Ten Commandments.
- D. Rod.

Response pattern

OPTION	A	B*	C	D
% choosing the option	10.51	22.74	61.94	4.10
Mean mark in other questions	18.11	22.79	17.62	16.47

This question came from the Old Testament part of the syllabus. It is a comprehension question and many candidates were going for option C. The Ten Commandments are closely connected to the making of the Sinai Covenant, hence candidates were easily attracted by the option. This indicates lack of knowledge in this area. Teachers should emphasize on reading the Bible references during the teaching and revision.

Question 69

The **main** lesson Christian learn from the incident in which Prophet Elisha healed Naaman of leprosy is that they should

- A. be humble to their church leaders.
- B. have hope in difficulty.
- C. obey instructions.
- D. co-operate with people.

Response Pattern

OPTION	A	B	C*	D
% choosing the option	15.62	42.43	33.30	7.89
Mean mark in other questions	14.99	19.15	21.12	14.82

This is an evaluation question which came from the Old Testament part of the syllabus. The candidates are supposed to know the healing of Naaman by Prophet Elisha. However, in this case the candidates could not take their time and critically evaluate the choices given hence many went for option **B** although it is not the **main** reason. Teachers should ensure continuous revision of the topics covered earlier since they are all critical when it comes to answering of questions.

Question 71

When Jesus was presented in the temple for dedication by his parents, Simeon described Him as the

- A. lamb of God
- B. King of Jews
- C. Saviour of all people
- D. Prince of peace

Response Pattern

OPTION	A	B	C*	D
% choosing the option	22.74	23.34	37.67	15.54
Mean mark in other questions	16.95	18.24	21.07	16.92

This is an analysis question which came from the New Testament part of the syllabus. The candidates were supposed to know the dedication of Jesus. However, the response pattern provided, indicates lack of knowledge in this area since a good number of candidates chose option A and B, although they are incorrect. Teachers should emphasize on reading the Bible references during the teaching and revision.

Question 76

Which one of the following is the **main** reason why Judas Iscariot betrayed Jesus? He

- A. Was influenced by Satan
- B. wanted to please the Pharisees
- C. wanted to get some money
- D. hoped to become popular.

Response Pattern

OPTION	A*	B	C	D
% choosing the option	15.80	20.47	51.88	11.13
Mean mark in other questions	20.09	16.41	19.85	16.58

This is an evaluation question which came from the New Testament part of the syllabus. The candidates are supposed to know the betrayal of Jesus by Judas Iscariot. However, majority of the candidates were influenced by Christian religious teachings outside the classroom set-up and therefore went for option C although it is not the **main** reason. Teachers should emphasis on reading the Bible for the learners to get the correct information which will enable them to answer questions correctly.

9.1.4 GENERAL COMMENTS

- i. There was a notable decline in the performance of the paper as indicated in the statistics in which the mean mark was **18.81** in 2019 as compared to **22.02** in 2018.
- ii. Evaluation and analysis questions seem to be pausing challenges to the candidates.
- iii. Teachers to improve on the teaching methods and emphasis on the use the Bible during teaching.