



Manyam Franchised Tests

SCIENCE 2012

| KCPE

| REVISIONS

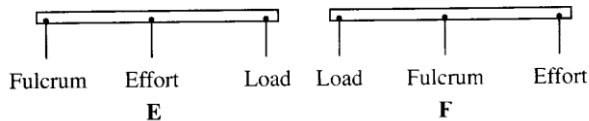
NAME..... SCHOOL..... DATE.....

1. Which of the following is a tuber crop?
 - A. Onion
 - B. Carrot
 - C. Pineapple
 - D. Cabbage
2. A beam balance is used for
 - A. measuring volume of objects
 - B. Comparing mass of different objects
 - C. Measuring height of different objects
 - D. comparing size of different objects
3. In which of the following groups of activities is friction NOT required?
 - A. Writing and erasing
 - B. Skating and braking
 - C. Flying and swimming
 - D. Walking and riding
4. Animals provide plants with
 - A. support and carbon dioxide
 - B. manure and oxygen
 - C. carbon dioxide and pollination
 - D. pollination and oxygen
5. Which of the following statements about blood vessels in the human body is **correct**?
 - A. All veins carry de-oxygenated blood
 - B. Blood pressure in arteries is higher than in veins
6. Which of the following **CORRECTLY** represents the path taken by food from the oesophagus?
 - A. Stomach - small intestines - large intestines - rectum - anus
 - B. Small intestines - large intestines - stomach - rectum - anus
 - C. Stomach - large intestines - small intestines - rectum - anus
 - D. Large intestines - stomach - small intestines - rectum - anus
7. Which of the following types of human teeth is **CORRECTLY** matched to its function?

Teeth	Function
A. Incisors	Tearing and cutting
B. Canines	Tearing and crushing
C. Premolars	Cutting and grinding
D. Molars	Crushing and grinding
8. A plant which has deep and widely spread root system is **LIKELY** to have
 - A. broad leaves
 - B. many leaves
 - C. succulent stems
 - D. weak stems
9. Which of the following groups of crops consists of cereals **ONLY**?

- A. Peas, beans and green grams
- B. Maize, rice and sorghum
- C. Millet, cow peas and maize
- D. Green grams, sorghum and rice

10. The diagrams below represent two levers E and F with different positions of load, effort and fulcrum.



The levers represented by E and F are

- A. spade crow bar
- B. wheelbarrow claw hammer
- C. claw hammer crow bar
- D. spade wheelbarrow

11. Which of the following pairs of plants is **CORRECTLY** matched with the type of root system?

Tap root	Fibrous root
A. Grass	Wheat
B. Tomato	Black jack
C. Coconut	Acacia
D. Kale	Onion

12. The following are statements about how different simple machines make work easier

- (i) Making the slope gentle
- (ii) Reducing the effort applied
- (iii) Changing direction of the force applied
- (iv) Reducing friction

Which of the statements apply to a single fixed

pulley?

- A. (i) and (iv)
- B. (i) and (ii)
- C. (ii) and (iii)
- D. (iii) and (iv)

13. Which of the following groups of animals consists **ONLY** of invertebrates?

- A. Crab, newt and snail
- B. Centipede, snail and spider
- C. Newt, centipede and slug
- D. Slug, frog and crab

14. Which of the following statements is **TRUE?**

- A. Fish have constant body temperature
- B. Birds have varying body temperature
- C. Young ones of amphibians live on land
- D. Reptiles breathe through the lungs

15. Which of the following are examples of herbivores, carnivores and omnivores?

Herbivore	Carnivore	Omnivore
A. Hippopotamus	Crocodile	Chimpanzee
B. Zebra	Lion	Vulture
C. Gorilla	Leopard	Hyena
D. Buffalo	Baboon	Rhino

16. Which of the following pairs consist **only** of animals with scales?

- A. Toad and duck
- B. Turtle and salamander
- C. Turtle and duck
- D. Salamander and toad

17. The following are some practices that help prevent the spread of water borne diseases

- (i) Using toilets for urination
- (ii) Washing fruits before eating them
- (iii) Washing hands before eating
- (iv) Wearing gumboots when walking in stagnant water

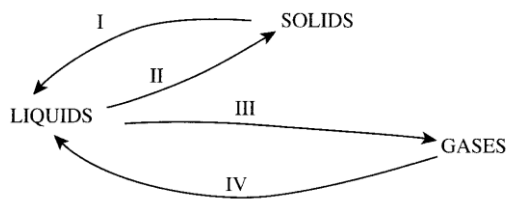
Which practices will help control the spread of bilharzias?

- A. (i) and (ii)
- B. (i) and (iv)
- C. (ii) and (iii)
- D. (iii) and (iv)

18. Transfer of heat by convection takes place in

- A. gases and liquids
- B. solids and liquids
- C. solids and vacuum
- D. gases and vacuum

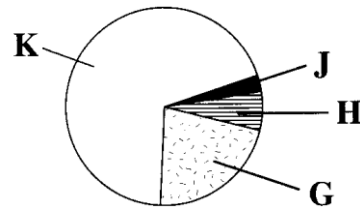
19. The diagram below represents the processes I, II, III, IV that are involved in change of states of matter



Which of the following **CORRECTLY** represents the processes?

- | | | | |
|-----------------|-------------|--------------|--------------|
| I | II | III | IV |
| A. Melting | Freezing | Evaporation | Condensation |
| B. Condensation | Evaporation | Melting | Freezing |
| C. Evaporation | Melting | Freezing | Condensation |
| D. Melting | Freezing | Condensation | Evaporation |

20. The pie chart below shows proportions of G, H, J and K that represent the components of air.



Which proportion **CORRECTLY** represents a gas used in fire extinguishers and a gas used in an electric tube?

- | | |
|----------------------------------|------------------------------|
| Used in fire extinguisher | used in electric tube |
| A. K | H |
| B. G | K |
| C. J | H |
| D. G | J |

21. Which of the following factors makes wax to float on water?

- A. Shape of material
- B. Type of material
- C. Size of material
- D. Mass of material

22. In which of the following are both materials **CORRECTLY** grouped as magnetic and non-magnetic?

Magnetic Non-magnet

- A. Copper Zinc
- B. Zinc Steel
- C. Aluminium Copper
- D. Steel Aluminium

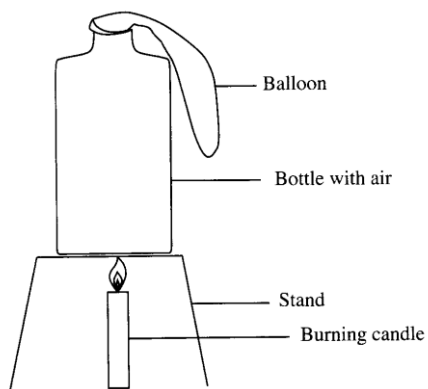
23. The following are activities carried out to investigate the effect of heat on a liquid

- (i) Placing the bottle on a source of heat
- (ii) Filling the bottle with coloured water
- (iii) Fixing a straw on the cork
- (iv) Closing the bottle tightly with the cork

Which one of the following is the **CORRECT ORDER** of the activities?

- A. (ii), (iii), (iv), (i)
- B. (iii), (iv), (ii), (i)
- C. (ii), (i), (iii), (iv)
- D. (iii), (ii), (i), (iv)

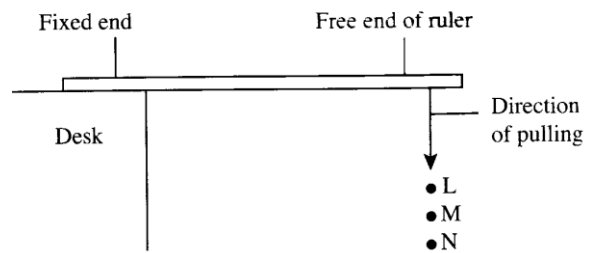
24. The diagram below shows a set-up that can be used to investigate the effect of heat on matter



The effect investigated is

- A. gases change state when heated
- B. solids expand when heated
- C. gases expand when heated
- D. solids change state when heated

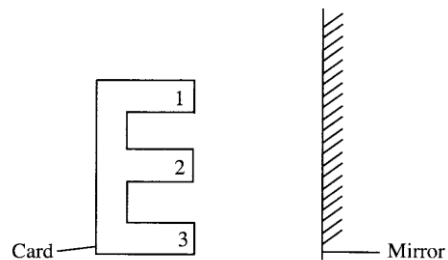
25. The diagram below represents a set-up in which a ruler is fixed to a desk and its free end pulled to positions L, M and N. At each position the free end is released to produce sound



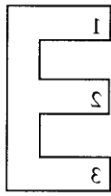
The set-up can be used to investigate

- A. special sounds
- B. loud and soft sound
- C. direction of sound
- D. noise pollution

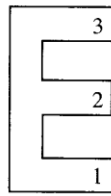
26. A card made in the shape of letter E and numbers 1, 2 and 3 written on it was placed in front of a mirror as shown in the diagram below



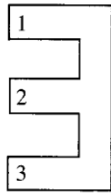
Which of the following **CORRECTLY** represents the image as seen in the mirror?



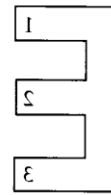
A



B



C



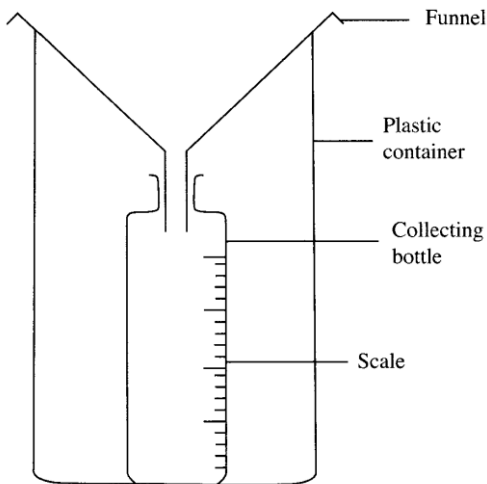
D

27. The reason why improved *jikos* have a clay lining is to
- reduce the amount of heat loss
 - reduce the space for charcoal
 - make charcoal light faster
 - make the jiko last longer
28. Which of the following practices will not result in a person getting an electric shock?
- Touching sockets with wet hands
 - Putting pencils in sockets
 - Overloading the sockets
 - Putting iron nails in sockets
29. Which of the following groups of sources of energy are renewable?
- Charcoal, kerosene, sawdust
 - water, firewood, animal dung
 - Diesel, wind, natural gas
 - Biogas, petrol, coal
30. Which of the following pairs of food is preserved by smoking, salting and drying?
- Meat and mushroom
 - Beans and fish

- Mushrooms and means
 - meat and fish
31. Which of the following is the **MAIN** reason why eating bread after expiry date is discouraged?

The bread could have

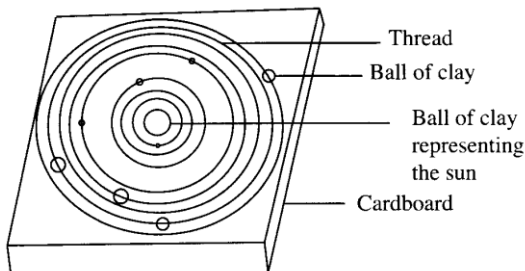
- lost nutrients
 - a bad state
 - some micro-organisms
 - changed its colour
32. Which of the following pairs consists of diseases caused by lack of minerals in the diet?
- Anaemia and rickets
 - kwashiorkor and anaemia
 - marasmus and Kwashiorkor
 - rickets and marasmus
33. A hilly area with deep channels is **LIKELY** to be experiencing
- sheet erosion
 - gully erosion
 - rill erosion
 - splash erosion
34. The diagram below shows an improvised rain gauge



The collecting bottle should

- A. have the funnel sealed to its mouth
- B. be wide to collect enough water
- C. be placed above the ground
- D. be transparent for easy reading

35. The diagram below represents a model of the solar system prepared by class six pupils



The mistake made in the model was

- A. using threads instead of wires
- B. placing a ball of clay next to the one representing the sun
- C. placing two balls of clay on one thread
- D. using balls of clay of different sizes

36. The **MAIN** reason why mothers are encouraged to breast feed their infants is because breast milk

- A. boosts immunity of the infant
- B. is free from disease causing germs
- C. is at the right temperature for infants
- D. is easily digested by infants

37. A person in the incubation period of HIV infection will show

- A. signs and symptoms but test negative
- B. no signs and no symptoms but test positive
- C. no signs, no symptoms and test negative
- D. signs, symptoms and test positive

38. Which of the following is a preventive measure against the spread of tuberculosis?

- A. Clearing bushes around houses
- B. Boiling drinking water
- C. Proper disposal of human waste
- D. Living in a well ventilated house

39. In which of the following are characteristics of cumulus and nimbus clouds **CORRECTLY** placed?

Cumulus	Nimbus
A. Dark grey in colour of cotton	Appear like bundles
B. Mountainous in shape	White in colour
C. White in colour shape	Mountainous in shape
D. Rain bearing	Dark grey in colour

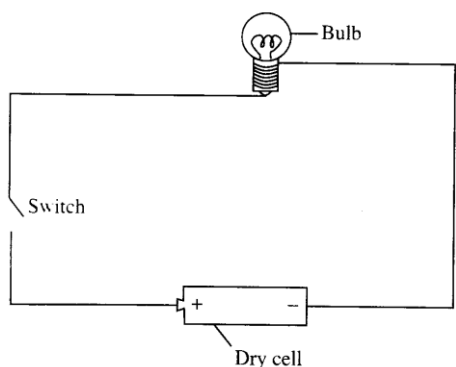
40. For two masses X and Y, the mass of X was twice that of Y. the diagram below shows a set-up that was used to investigate how the two masses balance at positions Q, R, S and T on a seesaw



Which of the following was a correct observation about the investigation?

- | Position of X | Position of Y | observation made |
|---------------|---------------|------------------|
| A. Q | T | End P moved down |
| B. R | T | End V moved up |
| C. Q | S | Seesaw balanced |
| D. R | S | End V moved down |

41. The diagram below represents a simple electric circuit



Which of the following energy transformations would take place when the switch is on?

- A. Chemical → electrical → heat → light.
- B. Electrical → chemical → light → heat.
- C. Chemical → electrical → light → heat.
- D. Electrical → light → chemical → heat.

42. Which of the following practices **LEAST** pollutes the soil?

- A. Spraying crops to kill pests
- B. Burning plant wastes in the farm
- C. Disposing of animal wastes in the farm
- D. Burying plastics in the soil

43. In an investigation, equal amounts of soap was added to equal amounts of water samples W and Z obtained from different sources.

The following observations were made:

- (i) W formed lather
- (ii) Z formed suspended particles

Which of the following statements about W and Z is **NOT CORRECT**?

- A. W may have fewer minerals
- B. Z may form lather after boiling
- C. W can form scales in kettle
- D. Z wastes soap when washing

44. Which of the following consists of materials with a definite volume and definite shape?

- A. Water, bottle, stone
- B. Paper, pin, ink
- C. Kerosene, cooking oil, milk
- D. Sand, flour, sugar

45. Which of the following practices will conserve soil?

- A. Using dry grass for mulching
- B. Burning vegetation on farms
- C. Ploughing along the slope
- D. Burying plastic materials

46. Soil becomes waterlogged due to

- A. its colour
- B. the size of its particles
- C. the absence of small animals in it
- D. the amount of air in it

47. Which of the following is **CORRECT** procedure that is used to obtain clear water from muddy water?
- A. Filtering and decanting
 - B. Evaporating and filtering
 - C. Decanting and filtering
 - D. Evaporating and decanting
48. Which of the following pairs of practices will control ticks, fleas and lice in livestock?
- A. Spraying and de-worming
 - B. Herding and dipping
 - C. De-worming and rotational grazing
 - D. Dipping and spraying
49. Which of the following statements is **TRUE** about manures?
- A. increase the growth of weeds
 - B. release specific nutrients to the soil
 - C. destroy micro-organism in the soil
 - D. cause pollution of the soil
50. The following are activities that pollute the environment
- (i) Burning charcoal in a closed room
 - (ii) oil spillage from tankers
 - (iii) Using diesel as fuel in vehicles
 - (iv) Dumping vegetable waste
- Which activities pollute air
- A. (i) and (iv)
 - B. (ii) and (iv)
 - C. (ii) and (iii)
 - D. (i) and (iii)