

**PANGANI GIRLS SCHOOL
BIOLOGY DEPARTMENT
FORM 2 - MID-TERM EXAM
TERM 1 - 2020**

Time 1 hour 15 minutes

NAME CLASS CLASS NO.....

Answer all the questions on the spaces provided.

1. Why is transport necessary in living organisms? (2marks)

.....
.....

2. Higher organisms have an elaborate transport system compared to lower organism. Explain why. (2marks)

.....
.....

3. State the two types of tissues responsible for transport in plants and for each state the materials transported. (4marks)

Tissue	Materials

4. a) State two primary functions of
i) Roots

.....
.....

- ii) Stems

.....
.....

iii) Draw a plan diagram showing the transverse section of a young root of a dicotyledonous plant. (5marks)

iv) What are the differences between the diagram you have drawn above and that of a transverse section of a young root of a monocotyledonous plant. (2marks)

.....
.....
.....
.....

5. a) Define transpiration. (2marks)

.....
.....
.....

b) State three types of transpiration. (3marks)

.....
.....
.....
.....
.....

6. a) How are the xylem vessels adapted to their function? (2marks)

.....
.....
.....
.....

b) Why are the xylem vessels more efficient in transportation of water than tracheids. (1mark)

.....
.....

7. How do the following factors affect the rate of transpiration?

i) Leaf shape. (2marks)

.....
.....

ii) Temperature. (2marks)

.....
.....

8. a) What are components of phloem tissue? (2marks)

i)

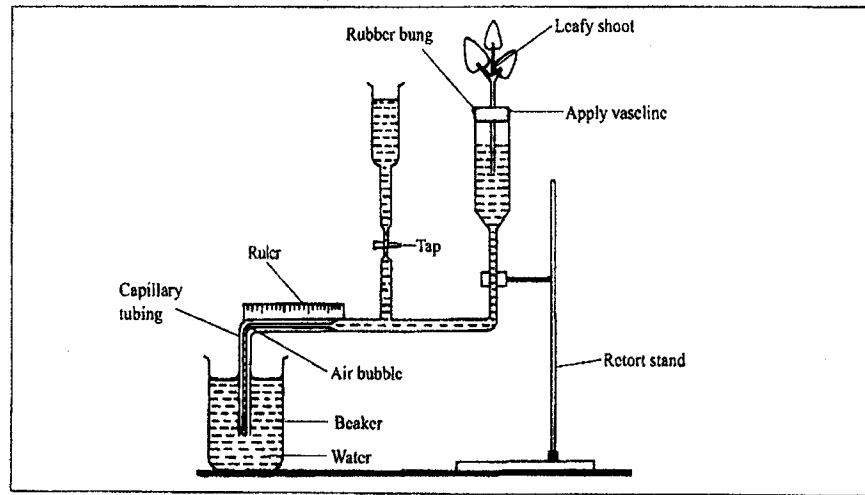
ii).....

b) How is each of the above adapted to its function. (2marks)

i)

ii).....

9. A set up that was used to investigate a certain process in plants is shown in the diagram below.



a) i) What is the name of the apparatus above? (1 mark)

.....

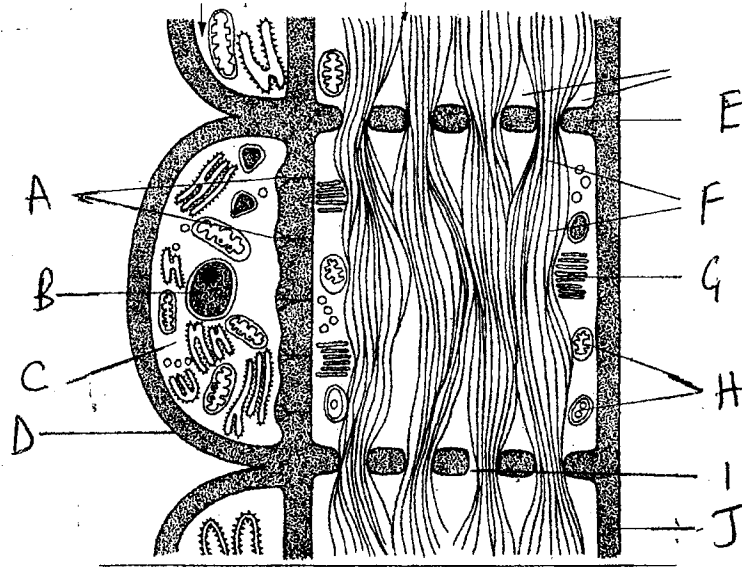
ii) What is the apparatus used for. (1 mark)

.....

iii) State three environmental factors that can affect the process under investigation. (3 marks)

.....
.....
.....
.....
.....
.....
.....

10. Name the parts labelled in the diagram below.



- A..... F.....
- B..... G.....
- C..... H.....
- D..... I.....
- E..... J.....