

441/2
HOME SCIENCE
CLOTHING AND TEXTILES (PRACTICAL)
PAPER II
TIME: 2 ½ HOURS



INSTRUCTIONS TO CANDIDATES

- a) This paper consists of 3 printed pages
- b) Candidates should check the paper and ascertain that all the pages are printed as indicated and that no questions are missing.

A pattern of a pair of shorts is provided. You are advised to study the sketches, the question paper and layout before you begin the test.

MATERIALS PROVIDED

1. Pattern pieces
 - A Short front
 - B Back yoke short
 - C Back short
 - D Waist band
 - E POCKET
 - F Fly facing
2. Light weight cotton fabric of 50cm long by 91cm wide.
3. Cotton sewing thread to match the fabric.
4. One large envelope.

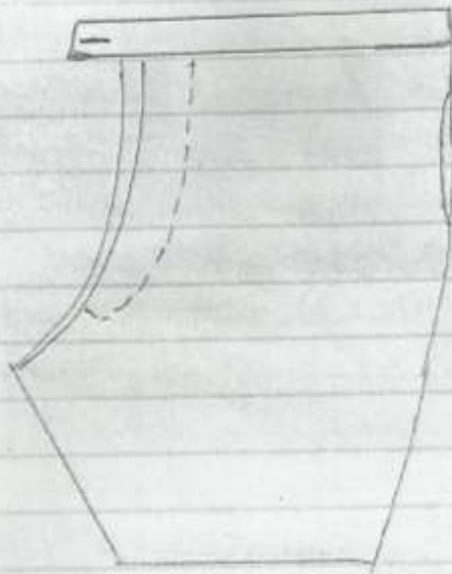
THE TEST

Using the provided materials, cut and make up the LEFT LEG of the shorts to show the following:

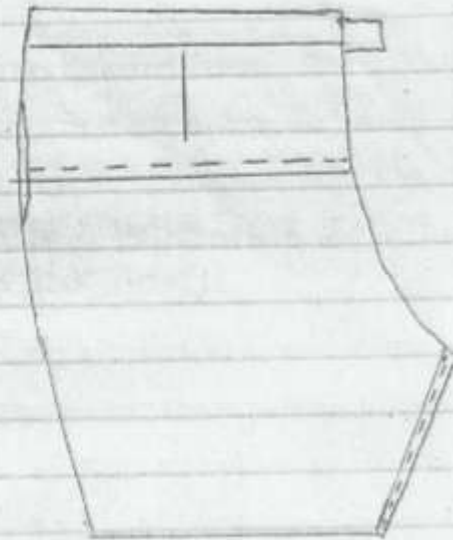
1. The working of the back dart.
2. The joining of the Back yoke short to the Back short using overlaid seam and neatening half of it.
3. The neatening of the fly facing.
4. The fixing of the fly facing in the left short and then top stitching as shown.
5. NB: Join the pocket sections to the short front and back. Under stitch the edges of the pocket mouth opening.
6. Working of the inner leg using Double stitching seam (machine fell seam)
7. Working of the side seam above and below the pocket section using open seam.
8. Work the pocket bag (Do not neaten the raw edges)
9. The preparation and attachment of an interfaced waistband.
10. Working of a button hole on the waist band.

At the end of the examination, firmly sew onto your work, on a single fabric, a label bearing your name and index number. Remove the needle and pins from your work. Then fold your work carefully and place it in the envelope provided. Do not put scraps of materials in the envelope.

SHORTS

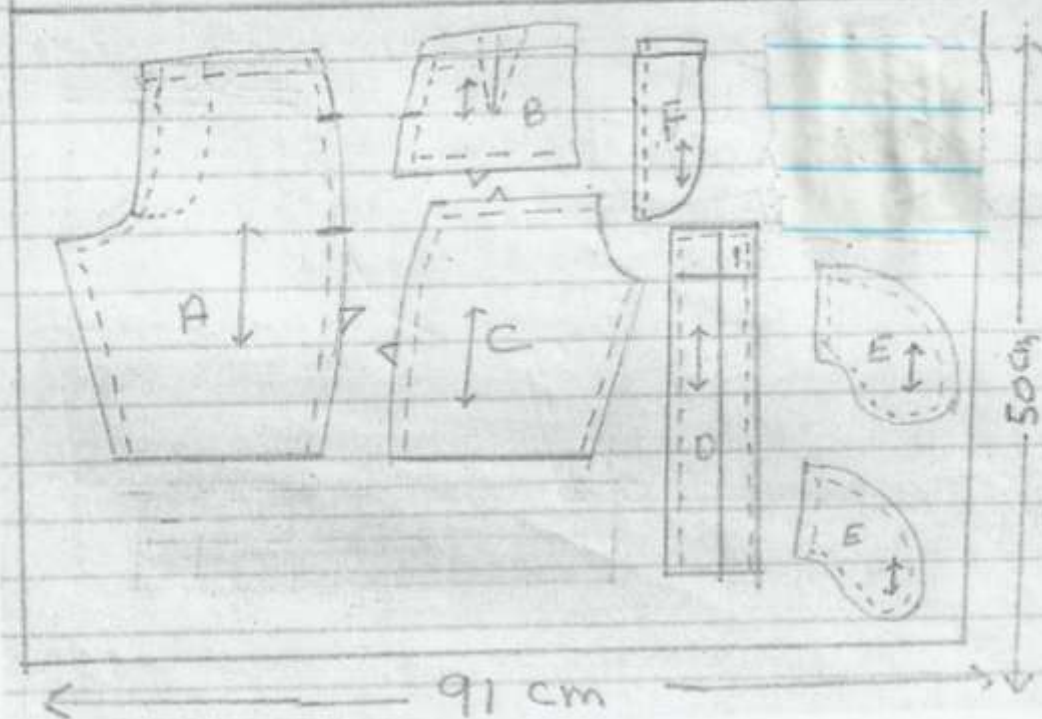


FRONT VIEW



BACK VIEW

THE LAYOUT (NOT DRAWN TO SCALE)



MARKING SCHEME

PROCEDURE	MAX SCORE	ACTUAL SCORE	REMARK
1. PRESENTATION			
a) Work well pressed and well folded.	1		
b) Label firmly stitched on single fabric	1 ½		
c) Pins and tacking threads removed	1		
d) Made up for left side.	1		
	4 ½		
2. CUTTING OUT			
a) All six pieces cut out	6		
b) Smooth cutting of Short at C.B	2		
c) Smooth cutting of short at C.F	1 ½		
d) Smooth cutting of yoke	2		
e) Straight grain of fabric	1 ½		
	13		
3. FLY FACING			
a) Well neatened facing	1		
b) Well knife-edged fly (short)	1		
c) FLATNESS	1		
d) Well top stitched	1		
	4		
4. IN SEAM POCKET			
a) Attachment of pocket facing to the front (1) and back (1)	1		
b) Joining of pocket bag with smooth stitchery	1		
c) Reinforcing of pocket mouth	1		
d) Under stitching	1		
e) Pocket facing downwards	1		
	5		
5. SIDE OPEN SEAM(If not correct give 0)			
a) Side seam above and below the pocket	2		
b) Side seam unneatened	1		
c) Open seam pressed flat	1		
	4		
6. OVERLAID SEAM (If not correct give 0)			
a) Yoke of back joined using overlaid seam.	1		
b) Yoke and short flash at fly and side seam.	1		
c) Straight stitchery (½) close to the edge (½)	1		
d) Seam allowance well neated half the seam	1		
	4		
7. INNER LEG SEAM (DOUBLE STITCHED)			
a) Straight stitchery of the first line	1		
b) Straight stitchery of the second line close to fold.	1		
c) Fell neatly tucked under	1		
d) Evenness of the fell	1		
e) Correct width of fell	½		
f) Flatness on the R.S and W.S	½		
g) Seam worked on the R.S	½		
h) Fell pressed towards the back.	½		

	6		
8. BUTTONHOLE			
a) Button hole correctly cut (½)and correct size(½).	1		
b) Use of buttonhole stitches	1		
c) Even stitches and evenly spaced	1		
d) Neat buttonhole on the W.S and R.S	1		
	4		
9. WAIST BAND			
a) Waistband attached with straight stitchery on R.S	1		
b) Well interfaced	½		
c) Correctly positioned waist band i.e. flash with C.B and leave 3cm overlap at the C.F of short front.	1		
d) Hemmed on the W. Side half the length	1		
e) Flatness of waistband	½		
f) Evenness of the waistband and correct width	½		
g) Well-knife edged corners.	1		
	5 ½		
TOTAL	50		