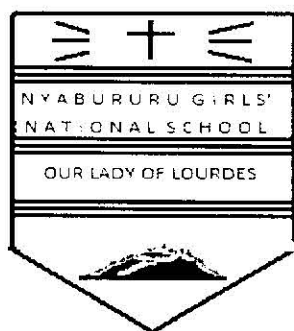


Name.....Adm No.....class.....No.....Sign.....



FORM 2 GEOGRAPHY
CAT III TERM 1, 2016
TIME: 2 HRS

Date done	
Invigilator	
Date returned	
Date revised	

INSTRUCTIONS

- Answer **all** questions.
- All answers **must** be written in the spaces provided.

FOR EXAMINER'S USE ONLY

PAGE	2	3	4	5	6	TOTAL
MARKS						

1 i) Name **four** areas covered under practical geography. (4 marks)

.....

.....

.....

ii) Give **two** types of environment as used in Geography. (2 marks)

.....

.....

2a) Name **three** members of the solar system (3 marks)

.....

.....

.....

(b) State **three** forces which contribute to the geoid shape of the earth (3 marks)

.....

.....

.....

(c) Name the:

i. **Two** planets without satellites.....(2 marks)

ii. A planet with a ring around it.....(1 mark)

(d) State **two** theories that explain the origin of the solar system. (2 marks)

.....

.....

3a) Why is mining referred to as a 'robber industry'? (2 marks)

.....

.....

b) State **three** factors that influence the occurrence of minerals (3 marks)

.....

.....

(c) Identify where the following minerals are mined in Kenya. (3 marks)

i. Diamond.....

ii. Fluorspar.....

iii. Trona.....

(d) Name **two** areas where diamond is mined in South Africa. (2 marks)

.....

(d) Explain **three** contributions of crude oil to the economy of the Middle East countries (3 marks)

.....

4a) Differentiate between orogeny and orogenesis (2 marks)

.....

(b) State **three** factors which influence the degree of folding (3 marks)

.....

(c) Name **two** examples of: (4 marks)

i. Fold mountains found in North America

.....

ii. Youngest fold mountains in geological history

.....

5a) Differentiate between a fault and faulting (2 marks)

.....

(b) Name:

(i) **Four** types of faults. (4 marks)

.....

(ii) **Three** features resulting from faulting. (3 marks)

.....

.....

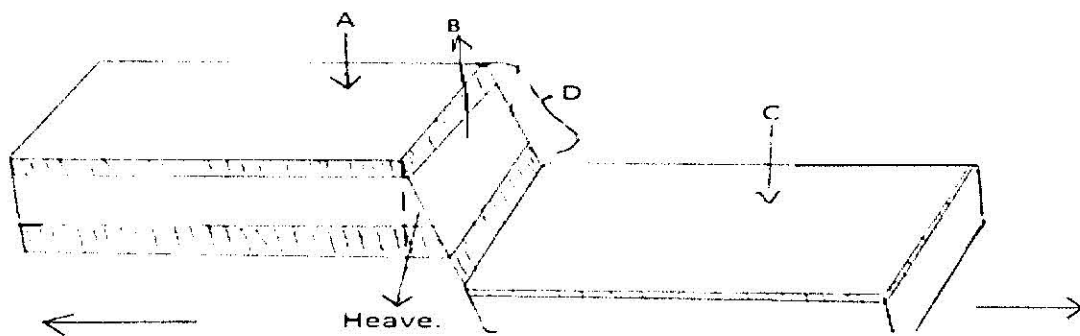
(c) List **two** Horst mountains found in East Africa (3 marks)

.....

.....

(d) The diagram below represents part of the earth that has undergone faulting.

(i) Name the sections marked **A, B, C** and **D**. (4 marks)



A.....

B.....

C.....

D.....

(ii) Name **four** features associated with the Gregory Rift Valley. (4 marks)

.....

.....

(d) Explain **four** effects of faulting to the physical landscape. (4 marks)

.....

.....

.....

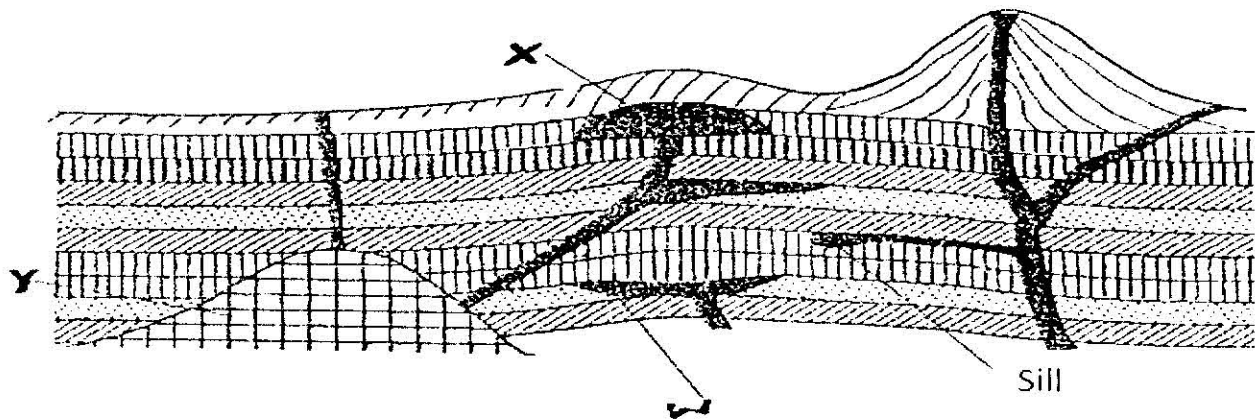
6(a) Differentiate between vulcanicity and volcanicity. (2 marks)

.....

.....

.....

- (b) The diagram below shows intrusive volcanic landforms. Use it to answer the questions that follow.



- (i) Name the features marked: **W, X and Y.** (3 marks)

W.....
X.....
Y.....

- (ii) Distinguish between intrusive and extrusive vulcanicity (2 marks)

.....
.....
.....

- (c) (i) Name **two** ways through which magma gets its way onto the surface of the earth. (2 marks)

.....
.....

- (ii) List **two** types of lava (2 marks)

.....
.....

- 7(a) Define the following terms: (6 Marks)

Earthquake.....

.....

Earthtremor.....

.....

Tsunami.....

.....

Name.....Adm No.....class.....No.....Sign.....

(b) Name **two** other types of earthquake waves apart from longitudinal waves (2 Marks)

.....

(c) Give **two** types of longitudinal waves (2 Marks)

.....

(d) State **three** effects of earthquakes in settled areas (3 Marks)

.....

(e) Give the scales of measurement for: (2 Marks)

i. Intensity of an earthquake.....

ii. Magnitude of an earthquake.....

8(a) What is magnetic declination (2 Marks)

.....

(b) State **four** ways of locating places on topographical maps (4 Marks)

.....

(c) State any **three** main methods of representing relief on topographical maps (3 Marks)

.....

(d) Name the **three** types of bearing (3 Marks)

.....

.....

END