

441/2

NAME..... INDEX NO.....

SIGNATURE..... DATE.....



Atika School

F r e e O n l i n e A c a d e m y

HOME SCIENCE

(CLOTHING CONSTRUCTION)

PAPER 2 (PRACTICAL)

2 HOURS AND 30 MINUTES

CHILD'S BLOUSE A pattern of a child's blouse is provided. You are advised to study the sketches, instructions and layout carefully before you begin the test.

MATERIALS PROVIDED

1. Pattern pieces

- Blouse front
- Blouse back
- Sleeve
- Sleeve band
- Front neck facing
- Back neck facing

2. 2 Plain light weight cotton fabric 60 cm long by 91 cm wide.

3 Sewing thread to match.

4 One large envelope.

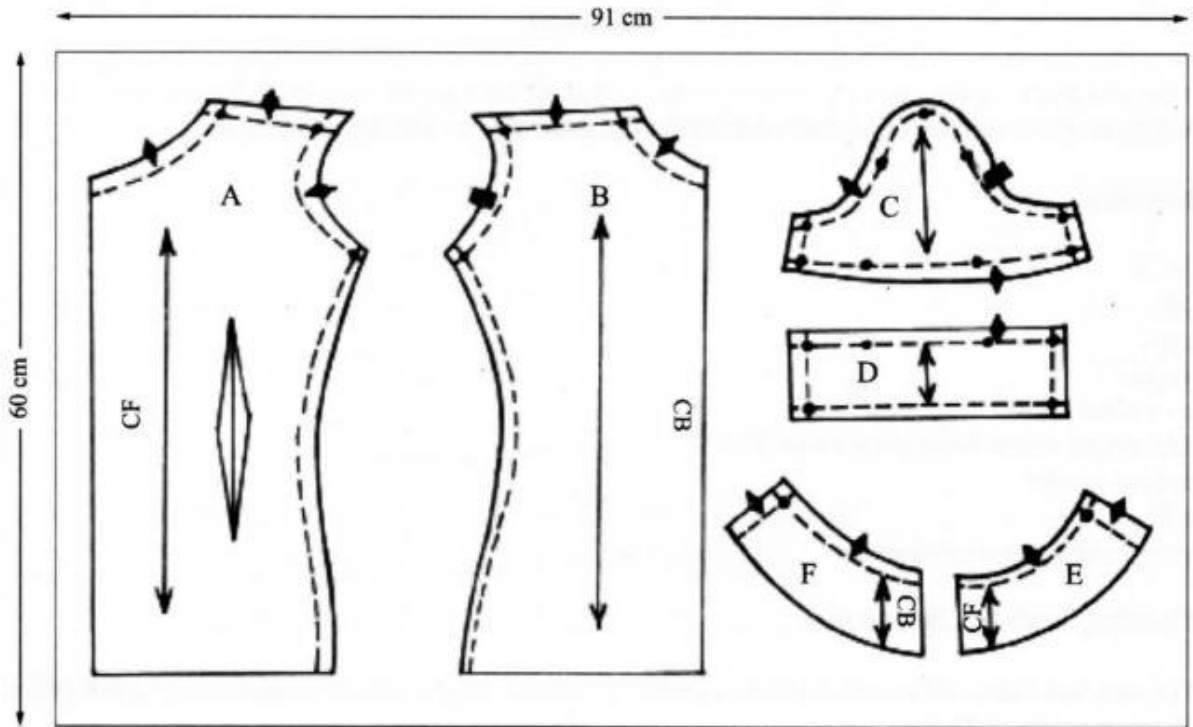
THE TEST

Using the materials provided, cut out and make the **RIGHT HALF** of the child's blouse to show the following processes:

- (a) making of the double pointed dart.
- (b) making of the shoulder seam using an open seam.
- (c) making of the side seam using a french seam
- (d) preparation of the sleeve to include: (i) french seam (ii) hemming the band half way.
- (e) attaching of the sleeve. Do not neaten the seam.
- (f) joining the front and back facing.
- (g) attaching the facing to finish the neckline and neatening the free edge.

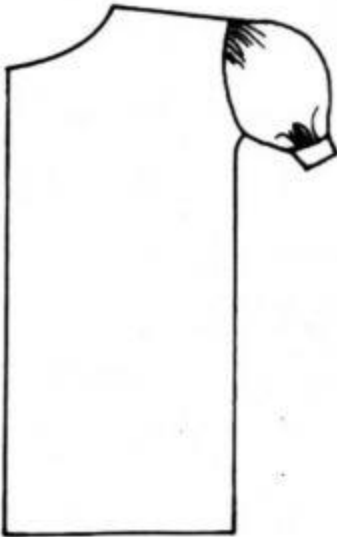
At the end of the examination. firmly sew onto your work, on a single fabric. a label bearing your name and index number. Remove the needle, pins and loose threads from your work. Fold your work neatly and place it in the envelope provided. **DO not put scraps of fabric in the envelope.**

THE LAYOUT (not drawn to scale)

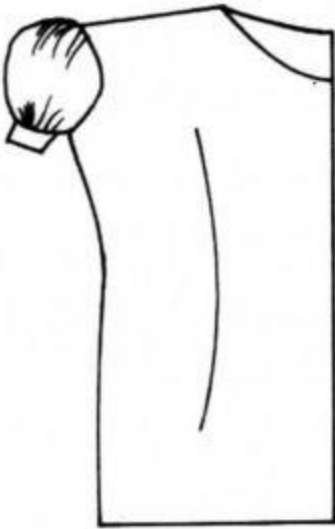


THE SKETCH

THE SKETCH



Back view



Front view