

SECTION A: BASIC SKILLS (30 marks)

Answer all questions in this section

1. Melody

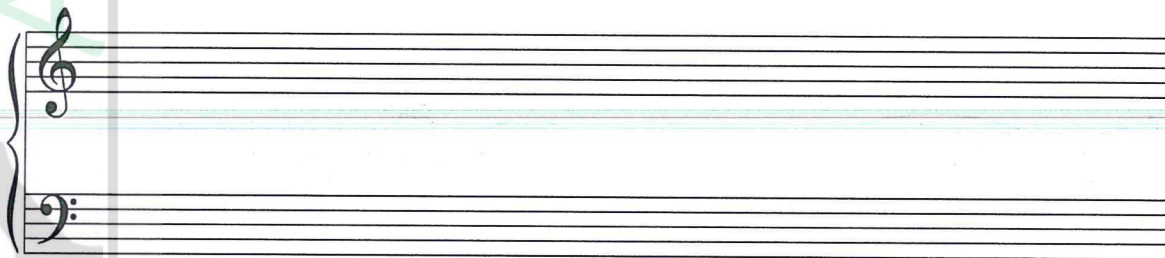
- (a) Starting with the given opening, compose a melody of sixteen bars for voice, modulating to the dominant and returning to the tonic. Incorporate a triplet. (9 marks)



- (b) Compose a melody and set to it the text given below. Use the treble stave and a key of your choice. (6 marks)

*Mwanafunzi nenda shule, kila somo utawale
Na wenzako uwapende, kazi bora ukatende.*

2. Harmonise the soprano melody below for SATB. Choose appropriate chords from I, II, IV, V and VI. (15 marks)



SECTION B: HISTORY AND ANALYSIS (54 marks)

3. African Music

- (a) Name **four** single-stringed fiddles from Kenya and identify the community that traditionally plays each of them. (4 marks)
- (b) Outline **four** functions of the music that marks the birth of a new born baby in the traditional African society. (4 marks)
- (c) Identify **two** Kenyan traditional dances named after the body part executing the main dance movement. (2 marks)
- (d)
 - (i) Identify **two** types of songs that are purely solo in performance. (2 marks)
 - (ii) Give the functions of any **two** parts of a traditional horn. (2 marks)

4. Western Music

Answer any **two** of the questions (a), (b), (c) and (d) below.

(a) Giovanni da Palestrina

- (i) State his musical engagements/roles at the following places: (4 marks)
 - I. Santa Maria Maggiore
 - II. St. Agapito
 - III. St. Peters Basilica
 - IV. Julian Chapel
- (ii) Outline **three** features of Palestrina's compositions. (3 marks)

(b) Jean Philippe Rameau

- (i) Outline **two** benefits of the *Treatise on Harmony* published by Rameau to music. (2 marks)
- (ii) Name a baroque opera composer whose reform ideas were influenced by Rameau's operatic style (1 mark)
- (iii) State the features of Rameau's opera with regard to the following:
 - I. Recitative (1 mark)
 - II. Arias (1 mark)
 - III. Choruses (1 mark)

(iv) State his nationality (1 mark)

(c) Carl Phillip Emmanuel Bach

(i) Name the musical style he is credited to have founded. (1 mark)

(ii) Identify **three** composers that influenced his early style. (3 marks)

(iii) Name **three** genres of chamber music that he composed. (3 marks)

(d) Arnold Schoenberg

(i) What is “The 12-tone Technique”? (1 mark)

(ii) Schoenberg’s temporary separation from his wife in 1908 led him to compose “*You Lean Against a Silver-Willow*”. State **one** unique feature of this piece. (1 mark)

(iii) Name **two** ways in which he acquired his music skills in early life (2 marks)

(iv) Name **three** of his students of composition that advanced his style. (3 marks)

5. Analysis of Prescribed African Music

Maasai Folksong by Najile Boys (PPMC Recording of KMF 2014)

(a) Outline the sequence of events at the opening section of the performance in the recording. (3 marks)

(b) Outline **four** elements which contribute to the creation of harmony in this performance. (4 marks)

(c) Describe the performance in this recording in relation to the following:

(i) Tempo (1 mark)

(ii) Rhythm (1 mark)

(iii) Pitch (1 mark)

6. Analysis of Prescribed Western Music

Quartet in F Major, Op. 3, No. 5, Second Movement (Serenade)
Andante Cantabile by Joseph Haydn

(a) Describe the performance medium for this music. (2 marks)

(b) With reference to bar numbers, identify the **three** major sections of this work. (3 marks)

(c) With reference to the music, give **three** reasons why the 1st violin part stands out. (3 marks)

(d) Outline **two** aspects that bring out contrast in this music. (2 marks)

7. Analysis of Unprepared Work

Refer to the music “*Rise with the Sun*” and answer the questions that follow:

Rise With The Sun Anonymous

♩ = 80

Recorder

Piano

8

16

23

(a) Name **two** articulation marks used in this piece. (2 marks)

(b) With reference to bar numbers identify the following:

(i) Scalic movement spanning more than one octave (1 mark)

(ii) A four-bar phrase identical to the phrase from bar 2 to 5 in pitch and rhythm. (1 mark)

(c) Explain how bar 1 to 14 should be performed with reference to repeat marks indicated. (2 marks)

SECTION C: GENERAL MUSIC KNOWLEDGE (16 marks)

8. (a) Explain how western music has influenced African music in the following areas:

(i) Music Instruments (1 mark)

(ii) Spontaneity of performance (1 mark)

(iii) Performance venue (1 mark)

(b) Outline **three** differences between opera and oratorio. (6 marks)

(c) (i) What is a National Anthem? (1 mark)

(ii) State **four** characteristics of the Kenya National Anthem that make it easy to learn and sing. (4 marks)

(d) State the meaning of the following terms as used in the music industry.

(i) Demo (1 mark)

(ii) Mastering (1 mark)