

NAME: INDEX NO.

SCHOOL: DATE:

441/2

HOMESCIENCE

CLOTHING & TEXTILE

PAPER 2

(Practical)

TIME: 2 ½ HOURS

DECEMBER, 2021

SAMIA JOINT EXAMINATION

(Kenya Certificate of Secondary Education)

Clothing and Construction

PAPER 2

PRACTICAL 2021

INSTRUCTIONS TO CANDIDATES

- a) *This paper consists of 3 printed pages*
- b) *Candidates should check the question paper to ascertain that all pages printed as indicated and that no questions are missing.*

A pattern of a child's dress is provided. You are advised to study the sketches, the question paper and the layout carefully before you begin the test.

Material provided.

1. Pattern pieces
 - A. Dress front
 - B. Dress back
 - C. Sleeve
 - D. Sleeve binding and ties
 - E. Sleeve opening facing
 - F. Front neck facing
 - G. Back neck facing
 - H. Pocket
2. Plain light weight cotton fabric 70cm long by 90cm wide.
3. Sewing thread to match fabric.
4. One large envelope.

The Test

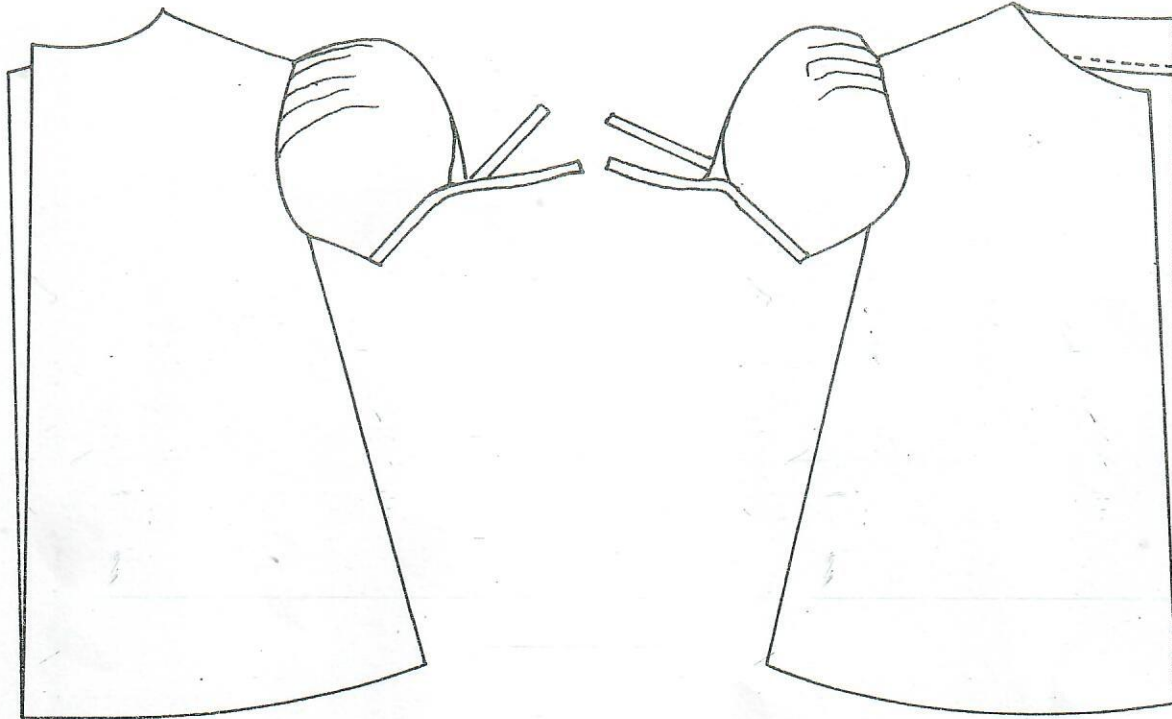
Using the materials provided, cut out and make up the RIGHT HALF of the child's dress to show the following;

- a) Making of double pointed dart at the back (9mks)
- b) The making of a French seam at the shoulder. (6mks)
- c) The preparation and attachment of the patch pocket. (17½mks)
- d) The joining of the side seam with a neatened open seam. (4mks)
- e) The preparation of a faced slit opening. (4½mks)
- f) The joining of the under arm seam using machine fell seam. (9½mks)
- g) The binding of the lower edge of the sleeve and preparation of the tie ends. (6mks)
- h) The preparation and attachment of the sleeve. (5mks)
- i) The preparation and attachment of the neck facings. (5mks)

NB: Do not neaten or trim the arm hole seam allowance.

At the end of the examination, firmly sew on to your work on a single fabric a label bearing your name and index number. Remove the needles and pins from your work, then fold your work carefully and place it in the envelope provided.

Do not put scraps of fabric in the envelope.



BACK VIEW

FRONT VIEW

THE LAYOUT (NOT DRAWN TO SCALE)

