

SAMIA JOINT EVALUATION EXAMS

511/2

MUSIC AURALS

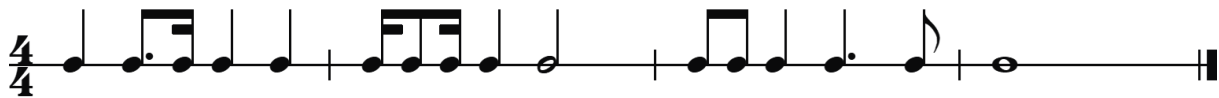
1 a).



$\frac{1}{2} \times 6$ per rhythm = 3mks

$\frac{1}{2}$ for T.S, $\frac{1}{2}$ for Bar lines = 1mk

b).



$\frac{1}{2} \times 16$ rhythms = 8mks

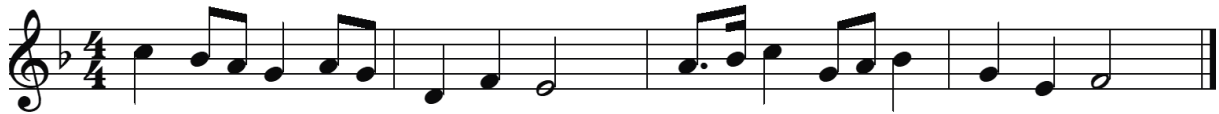
c).



$\frac{1}{2} \times 16$ rhythms = 8mks

2 a).

$\frac{1}{2} \times 18$ pitches = 9mks; $\frac{1}{2}$ for T.S and K.S each



b).

$\frac{1}{2} \times 18$ pitches = 9mks; $\frac{1}{2}$ for T.S and K.S each



3). i). Perfect 5th

ii). Major 7th

4). i). Imperfect

ii). Plagal

iii). Interrupted

iv). Perfect

5). a). A Major (Dominant)

b). C Minor (Relative Minor)