

# SCHOOL BASED EVALUATION TEST

STANDARD SIX - YEAR 2019

## SCIENCE

6



Time: 1hrs 40 min

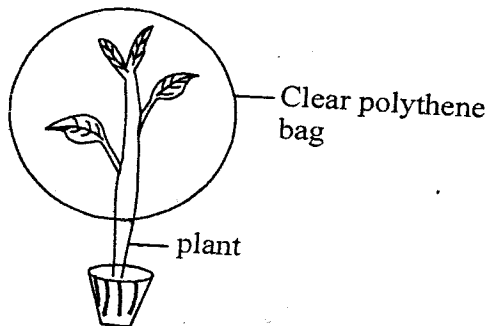
**READ THESE INSTRUCTIONS CAREFULLY.**

1. You have been given this question paper and a separate answer sheet. The question paper contains 50 questions.
2. Make sure that you have written on the answer sheet.

(i) Your name

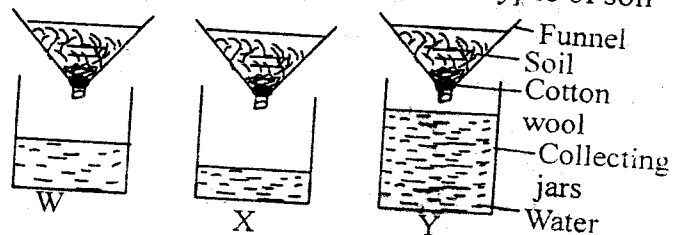
(ii) Name of your school

1. Which one of the following is **not** an immunisable disease?  
A. Typhoid. B. Measles.  
C. Malaria. D. Tuberculosis.
2. Which one of the following is **not** a part of the female reproductive system?  
A. Uterus. B. Urethra.  
C. Oviduct. D. Cervix.
3. The following are physical changes in adolescent boys. Which one is **not**?  
A. pimples may appear on the face.  
B. Increase in weight and height.  
C. Wet dreams begin.  
D. Broadening of hips.
4. The following are signs and symptoms of malaria **except**  
A. pain in the joints  
B. loss of appetite  
C. persistent dry cough  
D. very high body temperature.
5. Standard five pupils carried out the experiment shown below



- What were they investigating?
- A. Transpiration.
  - B. Photosynthesis in plants.
  - C. Presence of water droplets.
  - D. Absorption of water.

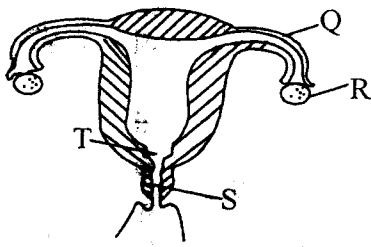
6. Which plant below **cannot** make its own food?  
A. Algae. B. Liverworts.  
C. Bracket tree. D. Spruce.
7. Which of the following objects is used when measuring the mass of an object?  
A. Kilogram. B. Standard weight.  
C. See-saw. D. Grams.
8. The experiment shown below was used to compare drainage in different types of soil



Name the soil mark W, X and Y respectively

- A. loam, clay, sand
  - B. sand, clay, loam
  - C. loam, sand, clay
  - D. clay, loam, sand
9. Which one of the following is **not** a characteristic of fish?  
A. Their bodies are covered with scales.  
B. They have varying body temperature  
C. They lay fertilised eggs.  
D. They do not take care of their young ones.
  10. Which material below is **not** needed when constructing a simple wind sock?  
A. Wire. B. Polythene paper  
C. Strong string D. Metal sheet.
  11. Which vaccine below is given to the child at birth only?  
A. BCG. B. Antipolio  
C. DPT D. Antimeasles.

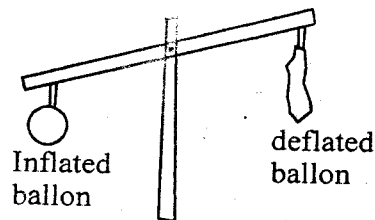
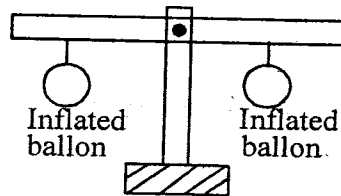
12. The diagram below shows parts of the female-reproductive system.



Which letter represents the part that receives the male reproductive sex cells?

- A. T                      B. R  
C. S                      D. Q
13. In which stage of HIV infection is the body's immunity weakest?  
A. Symptomatic stage.  
B. Full-blown AIDS.  
C. Window stage.  
D. Incubation stage.
14. Digestion of proteins ends in the;  
A. mouth                      B. ileum  
C. stomach                      D. large intestine.
15. Which animal below does not move by hopping?  
A. Grasshopper.                      B. Spider.  
C. Flea.                      D. Cricket.
16. The following are characteristics of a certain vertebrate;  
(i) warm-blooded  
(ii) breathe through lungs  
(iii) body covered with fur  
The above vertebrate is most likely to be;  
A. ostrich                      B. crocodile  
C. whale                      D. shark
17. Which of the following is **not** a requirement when investigating if soil contains moisture  
A. water.                      B. tin  
C. source of heat                      D. lid.
18. Which one of the following is **not** a characteristic of clay soil?  
A. It has the smallest particles.  
B. It has the best capillarity.  
C. It sticks together when wet.  
D. It drains a lot of water.

19. Which one of the following is **not** a recreational use of water?  
A. Water skiing.                      B. Swimming.  
C. Bathing.                      D. Boat racing.
20. Which food below does not provide the body with energy?  
A. Potatoes.                      B. Green grams.  
C. Banana.                      D. Groundnuts.
21. Which method of heat transfer below requires no medium?  
A. Conduction.  
B. Radiation.  
C. Convection and radiation.  
D. Convection.
22. A boy stood in the middle of the class and rang a bell. From the above activity they concluded that;  
A. ringing a bell is a special sound  
B. sound travels in a straight time  
C. sound travels in all direction  
D. noise in unwanted sound
23. Which one of the following is **not** a source of heat?  
A. Fire fly.                      B. Candle  
C. Sun                      D. Electricity
24. Standard five pupils carried out the experiment shown below.



From the above experiment, they concluded that;

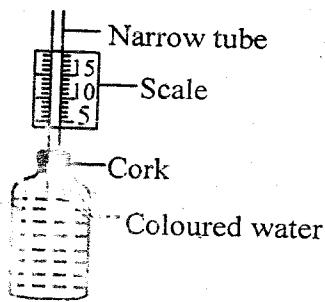
- A. gases have definite mass  
B. air expands when heated  
C. gases have indefinite volume  
D. air occupies space

25. Which group of food below consists of a balanced diet?
- A. Oranges, meat and cabbage.
  - B. Bread, eggs and mutton.
  - C. Rice, potatoes and beans.
  - D. Fish, rice and spinach.

26. Which substance below cannot change state when cooled?
- A. Water.
  - B. Ice.
  - C. Water vapour.
  - D. Carbon dioxide.

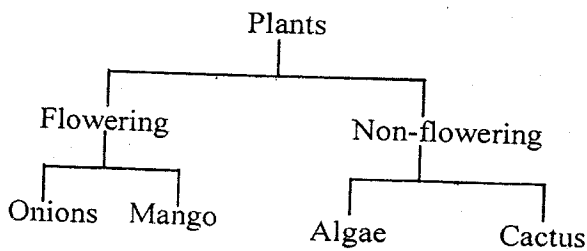
27. Which invertebrate below is **not** in the same group as weevil?
- A. Moth.
  - B. Ant.
  - C. Ladybird.
  - D. Mite.

28. The diagram below shows a simple weather instrument.



Which weather instrument works the same way as the above instrument?

- A. Rain gauge.
  - B. Windvane.
  - C. Windsock.
  - D. Air thermometer.
29. Some people classified plants as shown below.



Which plant was **wrongly** classified?

- A. Onions.
  - B. Algae.
  - C. Cactus.
  - D. Mango.
30. Which one of the following is **not** a proper use of medicines?
- A. Keeping medicines in a lockable cupboard.
  - B. Always checking the expiry date
  - C. Taking the right dose.
  - D. Not sharing medicines.

31. Ovulation in human beings always takes place after every;

- A. 3 weeks
- B. 28 months
- C. 56 days
- D. 28 days

32. Which one of the following is **not** an effect of HIV infection to an individual?

- A. Attack by secondary infections.
- B. Low self-esteem.
- C. Fear that he may be infected.
- D. Fear of rejection.

33. Which pair of changes of states of matter below requires cooling?

- A. freezing and Condensation
- B. Evaporation and Melting
- C. Condensation and Evaporation.
- D. Melting and Freezing

34. Which of the following materials **cannot** float on water?

- A. Leaf.
- B. Feather.
- C. Plastic bottle.
- D. Marble.

35. Which one of the following is **not** a good conductor of heat?

- A. Pin.
- B. Nail.
- C. Wire.
- D. Thread.

36. The following are signs and symptoms of a certain disease;

(i) *pain in the joints and muscle*

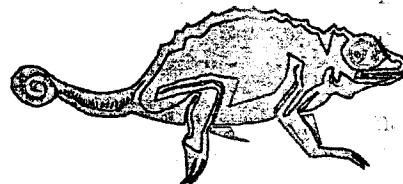
(ii) *severe headache*

(iii) *vomiting and diarrhoea*

The above diseases is **most likely** to be;

- A. tuberculosis
- B. malaria
- C. anaemia
- D. bilharzia

37. Which one of the following is **not** a characteristics of the vertebrate drawn below?



- A. It is cold-blooded
- B. It lays eggs
- C. It has moist skin
- D. It breathes through lungs

38. The size of the soil particles affects all the following **except**;
- drainage
  - soil components
  - soil texture
  - water-retention ability.
39. Which one of the following is the **main** reason why a rain gauge is raised above the ground?
- To prevent water from splashing in.
  - To reduce the rate of evaporation.
  - To make it firm in the ground.
  - To make it last longer.
40. Which one of the following is **not** a root tuber?
- Irish potatoes.
  - Arrow roots.
  - Carrot.
  - Cassava.
41. The following are ways in which tuberculosis can be prevented **except**;
- through vaccination
  - boiling milk before drinking
  - living in a well-ventilated room
  - draining stagnant water
42. Which part of the male reproductive system produces sperms?
- Testes.
  - Urethra.
  - Penis.
  - Sperm duct.
43. When we breathe in the ribs;
- get inflated
  - move downwards on outwards
  - move upwards and outwards
  - move inwards and downwards.
44. Which one of the following is **not** an importance of water in a diet? Water;
- prevents the skin from drying.
  - helps in removal of waste products.
  - helps in absorption of food.
  - prevents constipation.
45. Which one of the following substances has definite volume but indefinite shape?
- Ice.
  - Petrol.
  - Smoke.
  - Wood.
46. To avoid accidents tools should not be;
- wrongly used
  - used regularly
  - properly sharpened
  - properly stored
47. The quantity of matter in an object cannot be measured in;
- kilograms
  - tonnes
  - mass
  - gram
48. Which one of the following is **not** a use of water at home?
- Bathing.
  - Washing utensils.
  - Drinking
  - Watering animals
49. Which group of the following are all oil crops?
- Cotton, coconut, groundnuts.
  - Sunflower, sisal, cotton
  - Avocado, millet, coconut
  - Palm, sunflower, cocoa
50. Small animals always come out of soil after rain to look for;
- water
  - food
  - light
  - air

# SCHOOL BASED EVALUATION ~~X~~

## TEST

STANDARD SIX - YEAR 2019

## MARKING SCHEME

SCIENCE

S/STUDIES & C.R.E

1 C	39 A	1 B	40 D	79 C
2 B	40 A	2 C	41 A	80 C
3 D	41 D	3 A	42 C	81 A
4 C	42 A	4 D	43 B	82 C
5 A	43 C	5 B	44 B	83 D
6 C	44 D	6 C	45 B	84 C
7 B	45 B	7 D	46 B	85 A
8 A	46 A	8 A	47 D	86 B
9 C	47 C	9 C	48 B	87 A
10 D	48 D	10 D	49 A	88 B
11 A	49 A	11 B	50 C	89 B
12 C	50 D	12 A	51 <del>D</del>	90 C
13 D		13 C	52 <del>B</del>	
14 A		14 A	53 <del>D</del>	
15 D		15 C	54 <del>B</del>	
16 C		16 A	55 D	
17 A		17 D	56 A	
18 D		18 C	57 C	
19 C		19 D	58 B	
20 B		20 B	59 D	
21 B		21 B	60 A	
22 C		22 C	61 B	
23 A		23 A	62 C	
24 A		24 A	63 A	
25 D		25 D	64 B	
26 B		26 B	65 B	
27 D		27 D	66 B	
28 D		28 D	67 B	
29 C		29 C	68 C	
30 A		30 A	69 A	
31 D		31 B	70 C	
32 C		32 D	71 A	
33 A		33 C	72 A	
34 D		34 D	73 C	
35 D		35 B	74 D	
36 B		36 A	75 B	
37 C		37 C	76 B	
38 A		38 A	77 B	
39 B		39 B	78 C	